

# NSW Sexual Violence Project Fund

## Information session

Louise Pounder, Director  
Women, Family and Community Safety  
Department of Communities and Justice

10 March 2023

## Acknowledgment of Country

I would like to acknowledge the traditional custodians of the lands we all meet on today. I meet today on the traditional lands of the Gadigal and Bidjigal peoples of the Eora nation. I recognise their continuing connection to this land and pay my respects to their Elders past and present. I extend that respect to any Aboriginal and Torres Strait Islander people here today.

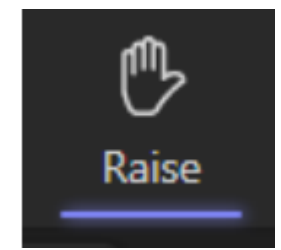
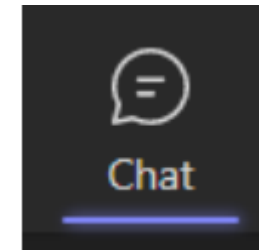


# Agenda

Overview  
Eligibility criteria  
Assessment criteria  
In and out of scope  
Application process  
Assessment process  
Successful projects  
Additional information  
Q&A

Please turn your camera off and  
mute your microphone

Please send your questions in the  
chat or raise your hand at the end  
of the session to ask questions



All unanswered questions will be  
taken on notice and we will share  
the information following the  
session

# Overview

---

## Purpose

- Grants program that will fund a range of one-off projects on **early intervention** and **response** to sexual violence targeting priority populations →
- A total of \$10m for projects of up to two years' duration (2023/24-2024/25)

## Target groups

- ✓ Women and children at risk of or experiencing sexual violence
- ✓ First Nations people
- ✓ Culturally and linguistically diverse communities (in particular, (including people of refugee, refugee-like experiences and asylum seeker backgrounds)
- ✓ Rural and remote communities
- ✓ LGBTIQ+ people
- ✓ Older women
- ✓ Children and young people (in particular, those who have experienced trauma, sexual and domestic violence or who are in or leaving out-of-home care)
- ✓ People with disability

# Overview | Fund objectives

---



Improve the capacity of the system to intervene early and respond appropriately to high priority groups.

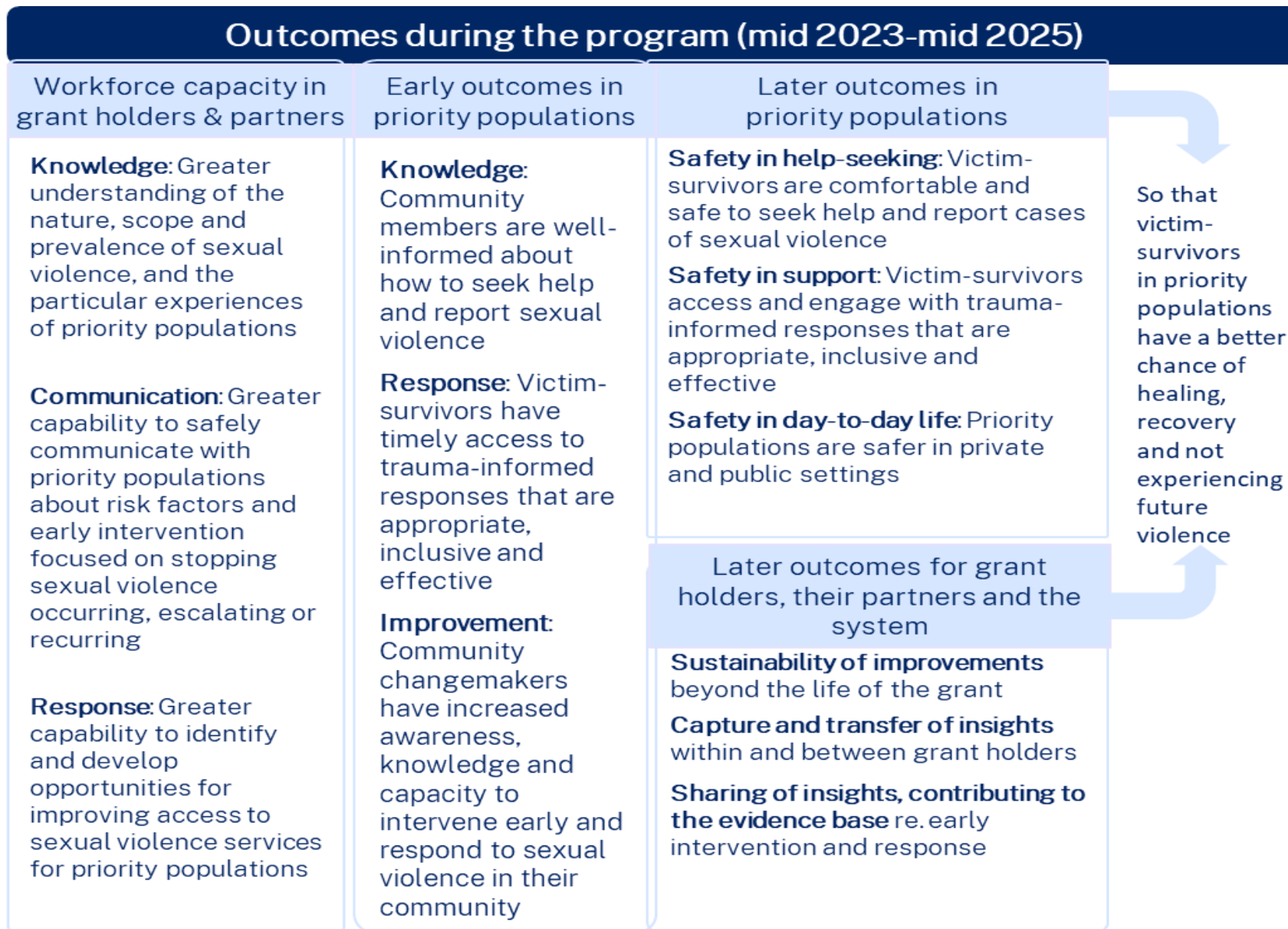


Increase delivery of early intervention and response projects to communities across NSW, to high priority groups and informed by co-design principles.



Improve outcomes and effectiveness of service delivery and improve integration through stronger coordination, collaboration, and information sharing.

# Expected Outcomes



# Overview | Funding amounts

---

## Stream 1 single entity projects

Applications submitted by single entity

\$100,000 - \$1,000,000 project

The total funding pool available is \$4 million (approximately)

## Stream 2 partnership projects

Applications submitted in partnership with organisation(s)

\$500,000 – \$1,500,000 project.

The total funding pool available is \$6 million (approximately)

Eligible organisations can only submit **one** project proposal

The same project cannot be submitted to both funding streams, or submitted twice by different applicants

**Partnerships:** DCJ will only provide a grant to a single eligible organisation. Organisations can work together through one lead organisation using subcontracting arrangements, if successful.

# Eligibility criteria

---

## 1. Eligible organisations

- ❖ Incorporated organisation registered and approved as not-for-profit body by NSW Fair Trading
- ❖ NSW based not-for profit company limited by guarantee (must be registered with ACNC and/or have DGR status)
- ❖ NSW based Indigenous Corporation (must be registered with Office of the Registrar of Indigenous Corporations)
- ❖ NSW Local Aboriginal Land Council
- ❖ Religious organisation operating in NSW
- ❖ NSW non-government organisation established under its own Act of Parliament

### **Stream 2** - Non-lead partner can include:

- ✓ NSW Government agencies and Councils
- ✓ Unincorporated community groups
- ✓ Non-profit organisations
- ✓ For-profit organisations providing pro bono services

## 2. Project focus

- ❖ Early intervention to address sexual violence
- ❖ Response to sexual violence

## 3. Geographic location

- ❖ projects must be implemented within the state of NSW only.

## 4. Priority populations

- ❖ projects must clearly demonstrate their focus on at least one of the high priority groups



# Assessment criteria

Demonstrated need	Demonstrated understanding of local context, priority groups, including demonstrating a clear funding gap Project must be evidence-based. Project proposals must clearly articulate the evidence for the specific problem, as well as the proposed solution.
Outcome and Impact	Alignment to NSW Sexual Violence Project Fund objectives and expected outcomes Strong link between project activities, demonstrated community need and proposed outcomes Sustainability of impact of the project beyond the life of the funding
Capacity to Deliver	Demonstrated relevant and existing work in the community where the proposal is targeted and priority groups Understanding of gender-based violence, in particular sexual violence, or domestic and family violence Clear and feasible project plan and milestones For Stream 2 only: Partner roles identified and relevance to project outcomes
Value for money	Clear budget based on valid cost estimates
Risk management	Demonstrated awareness of potential risks to the project and how they will be addressed

# In & Out of scope

---



- ⦿ Early intervention projects targeting specific priority population/s
- ⦿ Response projects targeting specific priority population/s
- ⦿ Projects that promote organisational learning, practice change and collaboration
- ⦿ Testing new strategies or responses, and/or adapting them from one setting or context into another



- ⦿ Projects not targeting priority populations
- ⦿ Primary prevention initiatives
- ⦿ Establishing a new frontline service
- ⦿ Business as usual service delivery

# In & Out of scope - costs



- ✓ Eligible costs are costs only directly associated with delivery of the project, including:
  - ❖ Staff involved in delivery of the proposed project, including on-costs
  - ❖ Expenses related to design or publication of material and resources
  - ❖ Advertising expenses
  - ❖ Development costs such as licence fees for third party during the project
  - ❖ Travel, such as transport and accommodation, to deliver project components



- ⊘ Any activity of a commercial nature that is for profit
- ⊘ Business as usual activities not directly related to the project
- ⊘ Organisation's costs for delivery of ongoing services, staffing not directly involved in the project, capital investments, training for ongoing service delivery
- ⊘ Core business capital equipment such as office equipment
- ⊘ Costs associated with attending or hosting conferences not directly related to the project
- ⊘ Retrospective activities, such as work already undertaken, part completed

# In scope – Examples of eligible projects

## Early intervention: Eligible projects could .....

- ✓ Strengthen early intervention mechanisms to address the impacts of exposure to sexual violence against women
- ✓ Strengthen mental health supports for children and young people as an early intervention mechanism, who have experienced gender-based violence.
- ✓ Implement initiatives that target life stages where individuals are most at risk of experiencing sexual violence, such as during pregnancy and after relationship breakdown
- ✓ Provide information for young people, parents and carers about online safety, including grooming
- ✓ Educate workers to identify and reduce risks of sexual violence for people living in residential care
- ✓ Equip workers to identify early risk factors of sexual violence faced by LGBTQI+ and multicultural communities
- ✓ Projects that support culturally safe early intervention and family support initiatives for Aboriginal people who have experienced sexual violence

## Response: Eligible projects could

- ✓ Provide training and information to build workforce capacity to deliver evidence-based and trauma-informed services, including in areas of emerging forms of family, domestic and sexual violence, such as technology-facilitated abuse that uses new that uses new and emerging technologies.
- ✓ Support workers to address intergenerational trauma of Aboriginal people who have experienced sexual violence
- ✓ Understand and address the unique forms of gender-based violence experienced by women with disability.
- ✓ Increase cultural awareness and safety training to recognise and respond to the interrelated and compounding forms of violence experienced by Aboriginal and Torres Strait Islander women.
- ✓ Respond to the serious impacts on children, young people and women of technology-facilitated abuse, in which perpetrators misuse common devices and platforms such as mobile phones, texting and social media.

# Application process

---

All applications must be completed via the Smarty Grants portal

(<https://dcj.smartygrants.com.au/svpfopen>)

No other form of submission will be accepted.

Supporting documentation for **Stream 2 only**:

Letter of understanding jointly signed by all partners **or** a Subcontracting form (that can be accessed here:

<https://www.facs.nsw.gov.au/download?file=580809>)

## Key dates

Applications open	28 February 2023
Application close	5pm, 3 April 2023

---

If you have any questions about the application form,  
please contact [SPC-GrantsHub@facs.nsw.gov.au](mailto:SPC-GrantsHub@facs.nsw.gov.au)

# Assessment process

The assessment process is comprised of three stages:

1. Eligibility assessment
2. Preliminary assessment
3. Ranking and funding recommendations

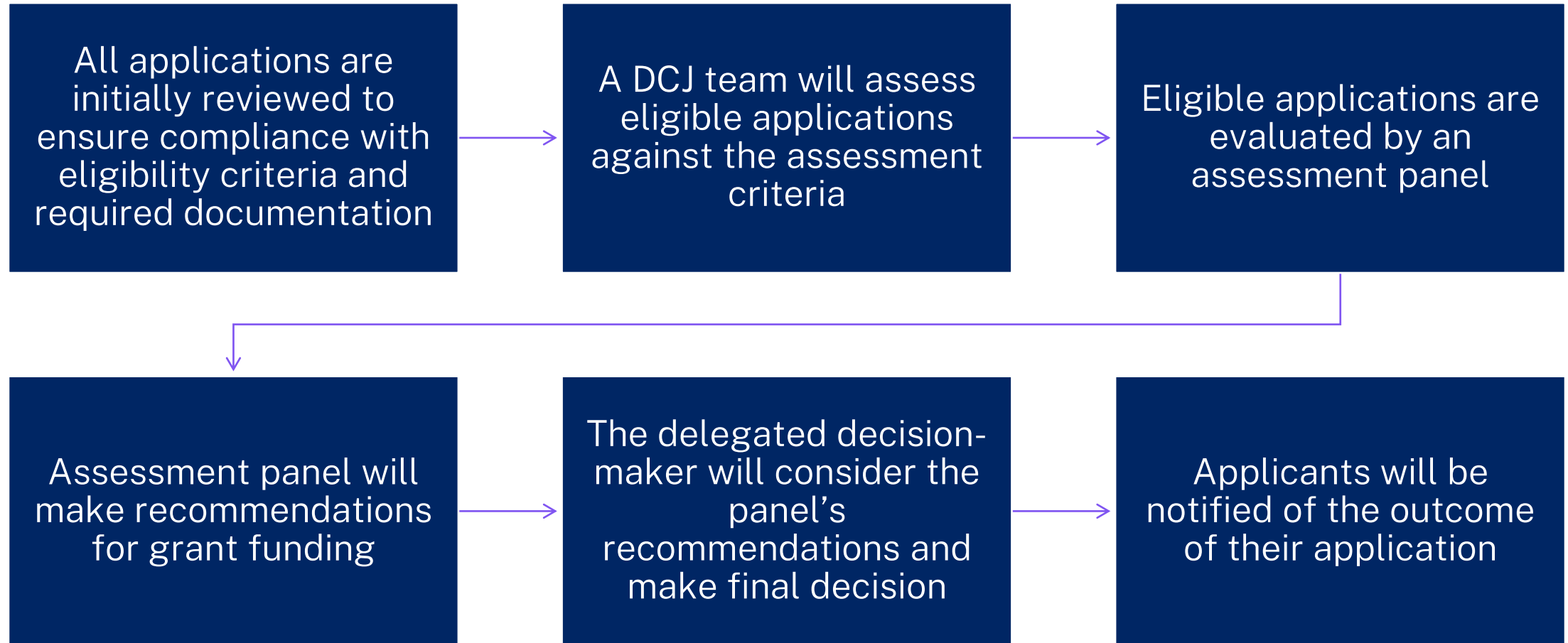
**Prioritisation:** the assessment process will prioritise equitable distribution of grants across priority groups and will ensure reasonable spread between early intervention and response projects.

Applications may also be prioritised to ensure geographic distribution across NSW to ensure an equitable spread of funds and projects in rural, regional and remote areas.

## Key dates

Applications close	03 April 2023
Assessment outcomes provided to applicants	mid-May 2023
Funding agreements established and payment made by	30 June 2023
Project conclusion	30 June 2025

# Assessment process



# Successful projects – Funding agreement

---

- ✓ All applicants will be notified by email.
- ✓ Grant Funding Agreement will be sent via DocuSign to successful applicants who will be required to return the signed Funding Agreement **within two weeks of receipt.**
- ✓ Details of payment arrangements and commitments will be identified in the funding agreement.
- ✓ Grant holders will be required to submit regular progress reports (frequency to be confirmed at contracting stage).
- ✓ All funds must be spent and projects delivered by **30 June 2025.**



# Successful projects – monitoring and evaluation

---

- ✓ External evaluator(s) will be appointed to evaluate the program as whole (program-level evaluation) as well as each funded project (project-level evaluation).
- ✓ Grant holders will receive support in the design and evaluation aspects of their project and will contribute to the independent evaluation process via data collection and input.
- ✓ Note – no need to budget for project-level evaluation beyond time.
- ✓ Evaluation process will be tailored to each organisation's needs. In designing and carrying out the evaluation, DCJ will consider and respect Indigenous Data Sovereignty and Indigenous Data Governance principles, and Closing the Gap Priority Reform 4: Shared Access to Data and Information at a Regional Level

# Additional Information

---



NSW National Redress Scheme

Insurance

COVID-19

Banking details

---



For further information and before you start your application, please review:

1. [Grant Program Guidelines](#)
2. [Frequently Asked Questions \(FAQs\)](#)

# Q&A

Please post your question in the chat or raise your hand.