

## How are young people involved?

Young people aged 18 years and over are invited to participate in the Survey. The Survey will be administered by an interviewer who will record the responses on a Computer-Assisted Personal Interviewing (CAPI) system. The Survey takes about one and a half hours and participants receive a \$100 gift voucher to thank them for their time.

We will be seeking consent before the interview and your answers will remain confidential. You can withdraw consent and discontinue at any time.

## How will I be informed about the Study findings?

Research reports on the Study findings, Evidence to Action Notes and Newsletters are published on the POCLS webpage:

[www.dcj.nsw.gov.au/about-us/facsiar/pathways-of-care-longitudinal-study/pocls-publications](http://www.dcj.nsw.gov.au/about-us/facsiar/pathways-of-care-longitudinal-study/pocls-publications)

In any publication, information is presented in such a way that participants are not able to be identified.

The Study interactive dashboards are now available on the webpage and provide high level information collected from children and their caregivers about their experiences with OOHC.

[www.dcj.nsw.gov.au/about-us/facsiar/pathways-of-care-longitudinal-study/interactive-dashboards](http://www.dcj.nsw.gov.au/about-us/facsiar/pathways-of-care-longitudinal-study/interactive-dashboards)

## What are the Study timelines?

We would like to invite you to be part of the part of the Survey for young adults over 18 years. Interviews will commence in 2025 and will run for approximately 6 months.

The Wave 6 data collection for 12-17 year olds and their carers commenced in May 2023 and will continue through to mid 2024.

Analysis of the data collected for the above surveys will commence in 2025.

## Ethics approvals

The Study has been approved by the following Human Research Ethics Committees:

- UNSW Human Research Ethics Committee (no. HC 210985)
- Aboriginal Health and Medical Research Council of NSW Ethics Committee (no. 766/10 continued)
- NSW Department of Education State Education Research Approval Process (SERAP) (no. 2012260)
- Catholic Education Office Sydney (and relevant dioceses)
- NSW Population & Health Services Research Ethics Committee (no. HREC/14/CIPHS/74 Cancer Institute NSW: 2014/12/570)
- Australian Institute of Health and Welfare (EO2019-1-406).

Participation in this study is voluntary and you can withdraw at any time.

## Who is conducting the Study?

The NSW Department of Communities and Justice (DCJ) is conducting the Study with the assistance of a consortium of researchers from the University of Sydney, University of New South Wales, University of South Australia, Kurungkurl Katitjin - Edith Cowan University, University of Wollongong, Sax Institute, University of Canterbury - New Zealand, Chapin Hall Centre for Children - University of Chicago. The research project is also guided by the Study's Aboriginal Governance Panel made up of practitioners, academics and community members, chaired by AbSec.

The interviews are being conducted by Ipsos [www.ipsos.com/en-au](http://www.ipsos.com/en-au) who are social research data collection experts.

## Where do I find more Study information?

The Study webpage has information for researchers and participants including the Study video [www.dcj.nsw.gov.au/about-us/facsiar/pathways-of-care-longitudinal-study/watch-the-study-videos](http://www.dcj.nsw.gov.au/about-us/facsiar/pathways-of-care-longitudinal-study/watch-the-study-videos)

To contact DCJ researchers who are managing the study phone **1800 997 960** (free call) or email [Pathways@dcj.nsw.gov.au](mailto:Pathways@dcj.nsw.gov.au)



## About the Study: Information for Young Adults 18 Years and Over

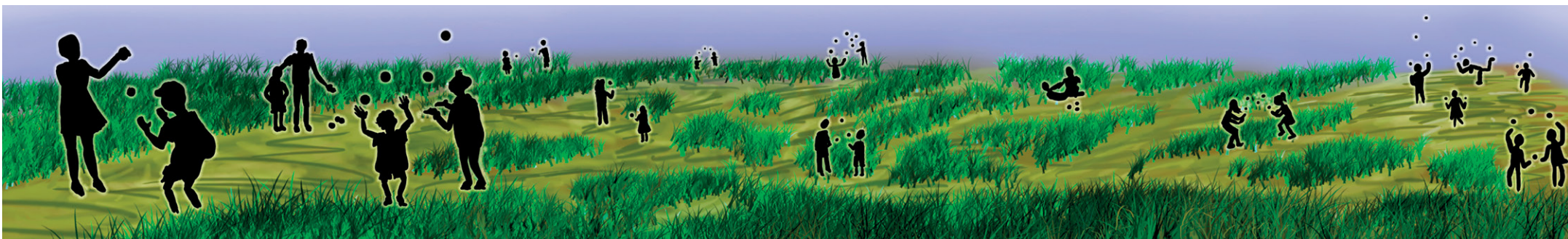
### Pathways of Care Longitudinal Study

A survey of children and young people in out-of-home care

The artwork was created by a young person who grew up in care.

*"The banner and logo show many pathways through the care system with a carer or caseworker acting as a guide, ultimately leading to independence of every young person. Whether we live with family or strangers, study, work or just try our best, the paths we choose and are guided through in our youth are what we use to prepare ourselves for the happiest adulthood we can achieve." Billy Black*





## Pathways of Care Longitudinal Study

This is a large-scale longitudinal study of children and young people in out-of-home care (OOHC) in NSW on Children's Court orders.

This Study is about how to improve the lives of children and young people who are or have been in OOHC. The findings are being used to inform the services and support offered to children and young people and those caring for them.

## What are the Study objectives?

- To describe the characteristics, child protection history, development and wellbeing of children and young people at the time they enter OOHC on Children's Court orders for the first time.
- To describe the services, interventions and pathways for children and young people in OOHC, post restoration, guardianship, adoption and on leaving care at 18 years.
- To describe children and young people's experiences and outcomes from growing up in OOHC, post restoration, guardianship, adoption and on leaving care at 18 years.
- To understand the factors that influence the outcomes for children and young people who grow up in OOHC, re returned home, live with guardians, adopted, and on leaving care at 18 years.
- To inform policy and practice to strengthen the OOHC service system in NSW to improve the outcomes for children and young people in OOHC.

## What are the key research questions for young adults aged 18-25 years?

The key research questions are outlined on the Study webpage. The POCLS aftercare survey seeks to:

- Reflect on the young people's experience of OOHC and aftercare;
- Explore, for the first time, their experience of aftercare support (if applicable to the young person); and
- Continue to follow the young person's outcomes across health, education, work and family/relationships.

The key research questions address the OOHC population in general as well as the key sub-populations in OOHC including: Aboriginal children and young people; child and young people from culturally and linguistically diverse backgrounds; and those with high needs and/or disabilities.

## What is the Study's sample?

In the Study, all children, and young people (aged 0-17 years) entered OOHC in NSW for the first time between May 2010 and October 2011. Approximately 2,800 children and young people received final court orders by April 2013 and became eligible to participate in the Study.

The Survey of 18-25 year olds is aimed at young adults in the Study cohort who have participated in at least one interview since the Study began in 2010 when they were under 18 years of age, or their caregiver participated in at least one interview.

## What are the data sources?

The study is based on data from:

- Interviews with carers, parents, children and young people
- Surveys of caseworkers, childcare workers and teachers
- Existing child protection and OOHC administrative databases
- Record linkage (e.g. education, health, juvenile justice)
- Housing and Homelessness data.

For primary data collection, the study uses existing standardised measures and validated questions from other studies. Qualitative data is also collected to add richness to the quantitative data. See webpage for details.

The Study measures and questions, along with administrative data available through linkage, will provide robust information about the Study population.

## Study webpage

For information about the Study please visit [www.dcj.nsw.gov.au/about-us/facsiar/pathways-of-care-longitudinal-study](http://www.dcj.nsw.gov.au/about-us/facsiar/pathways-of-care-longitudinal-study)

