

How are the adults involved?

All carers including relative/kinship carers, foster carers, residential care workers, adoptive parents, guardians and birth parents (if the child is restored) are invited to participate in face-to-face interviews. The interview is programmed in a Computer-Assisted Personal Interviewing (CAPI) system and a Computer-Assisted Self Interviewing (CASI) system for the more sensitive questions.

The adult interview takes about two hours and caregivers receive a \$50 gift voucher for every interview to thank them.

How are children/young people involved?

Children aged 0-35 months are not directly involved in this study.

Children aged 3-17 years are invited to participate in standardised measures of language development (Peabody Picture Vocabulary Test - PPVT) and a non-verbal reasoning Wechsler Intelligence Scale for Children (WISC-IV) Matrix Reasoning Test.

Children and young people aged 7-17 years are invited to participate in a self-complete interview with the assistance of an interviewer if required. The Audio Computer-Assisted Self Interviewing (ACASI) system has a number of special features to make it appealing including the voice recording by a young person.

To thank them for participating in the study, 3-6 year olds receive a picture book, 7-11 year olds receive a \$20 gift voucher and young people 12-17 years receive a \$30 voucher.

Data analysis and reporting

After each wave of data collection, reports are published providing information about children and young people's circumstances and developmental outcomes. The reports examine key policy areas.

Ethics approvals

The study has been approved by the following Human Research Ethics Committees:

- UNSW Human Research Ethics Committee (no. HC 210985)
- Aboriginal Health and Medical Research Council of NSW Ethics Committee (no. 2016/22)
- NSW Department of Education State Education Research Approval Process (SERAP) (no. 2012260)
- Catholic Education Office Sydney (and relevant dioceses)
- NSW Population & Health Services Research Ethics Committee (no. HREC/14/CIPHS/74 Cancer Institute NSW: 2014/12/570).

Participation in this study is voluntary and you can withdraw at any time.

Who is conducting the study?

NSW Department of Communities and Justice is conducting the study with the assistance of a consortium of researchers from the University of Sydney, University of NSW, University of South Australia, Kurongkurl Katitjin - Edith Cowan University, University of Wollongong, Sax Institute, University of Canterbury - New Zealand, Chapin Hall Centre for Children University of Chicago.

The interviews are being conducted by Ipsos/I-view www.ipsos.com.au who are social research data collection experts.

Where do I find more study information?

The study webpage has information for researchers and participants including the study video www.facs.nsw.gov.au/resources/research/pathways-of-care/videos

To contact DCJ researchers who are managing the study phone **1800 997 960** (free call) or email Pathways@facs.nsw.gov.au



About the Study

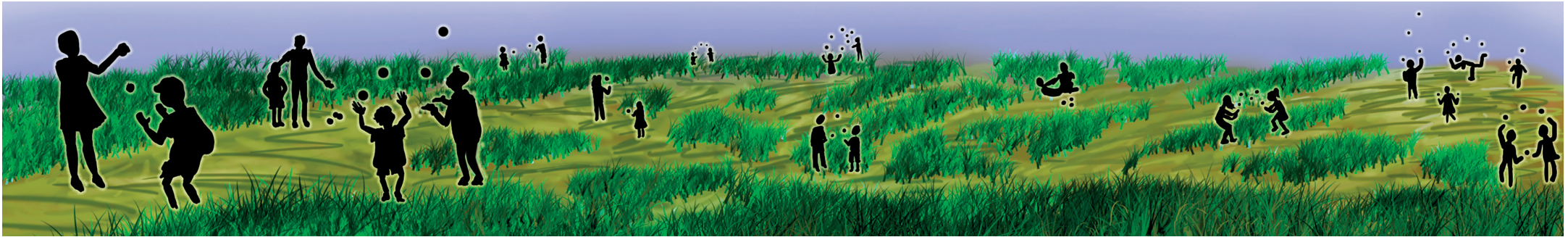
Pathways of Care Longitudinal Study

A study of children and young people in out-of home

The artwork was created by a young person who grew up in care.

"The banner and logo show many pathways through the care system with a carer or caseworker acting as a guide, ultimately leading to independence of every young person. Whether we live with family or strangers, study, work or just try our best, the paths we choose and are guided through in our youth are what we use to prepare ourselves for the happiest adulthood we can achieve." Billy Black





Pathways of Care Longitudinal Study

This is a large-scale longitudinal study of children and young people aged 0-17 years in out-of-home care (OOHC) in NSW on Children's Court orders.

This study is about how to improve the lives of children and young people who are or have been in OOHC. The findings are being used to inform the services and support offered to children and young people and those caring for them.

What are the study objectives?

- To describe the characteristics, child protection history, development and wellbeing of children and young people at the time they enter OOHC on Children's Court orders for the first time.
- To describe the services, interventions and pathways for children and young people in OOHC, post restoration, adoption and on leaving care at 18 years.
- To describe children and young people's experiences and outcomes from growing up in OOHC, post restoration, adoption and on leaving care at 18 years.
- To understand the factors that influence the outcomes for children and young people who grow up in OOHC, are returned home or adopted, and on leaving care at 18 years.
- To inform policy and practice to strengthen the OOHC service system in NSW to improve the outcomes for children and young people in OOHC.

What are the key research questions?

The key research questions are outlined on the study webpage. They address children and young people's:

- Characteristics and circumstances on entry to care
- Experiences during and post OOHC
- Developmental outcomes (socio-emotional wellbeing, cognitive/learning and physical health)
- Progress in comparison to their peers not in OOHC.

The key research questions address the OOHC population in general as well as the key sub-populations in OOHC including: Aboriginal children and young people; child and young people from culturally and linguistically diverse backgrounds; and those with high needs and/or disabilities.

What is the study's sample?

All children and young people aged 0-17 years who entered OOHC in NSW for the first time between May 2010 and October 2011 (18 month recruitment period) and have final Children's Court orders. Approximately 2,800 children and young people are in the study's sample.

Children and young people are selected for this study from the NSW Department of Communities and Justice' administrative database.

What are the data sources?

The study is based on data from:

- Interviews with carers, parents, children and young people
- Surveys of caseworkers, childcare workers and teachers
- Existing child protection and OOHC administrative databases
- Record linkage (eg. education, development, health, juvenile justice)
- NSW Health Blue Book (electronically scanned for children aged up to 5 years old).

For primary data collections, the study uses existing standardised measures and validated questions from other studies, such as the Longitudinal Study of Australian Children (LSAC). Qualitative data is also collected to add richness to the quantitative data. See webpage for details.

The study measures and questions, along with administrative data available through linkage, will provide robust comparison groups for this study population.

Study timelines

The recruitment of study children and young people began in February 2011. Carer's, parents, children and young people will be invited to participate in six interviews about 18-24 months apart. The interviews started in May 2011 and the data collection will be completed in 2023.