

How will my child be involved?

Children and young people need to be at home during the interview because the interviewer invites them to do a language and reasoning activity that takes about 10 minutes.

Children and young people aged 12-17 years are invited to do an interview about their experiences that takes about 30 minutes.

To thank them for participating young people will receive a \$30 gift voucher.

My consent to an interview

Written consent is sought from you and agreement from your child (aged 12-17 years) before the interview. We can provide you with information on the questions young people are asked, but their answers are confidential.

Other sources of information

To get a good understanding of how the service system is working we collect information about the child or young person's development and wellbeing from a number of sources such as education, health and human services agencies, for all children in the study.

How will I be informed about the findings?

Newsletters and research reports will be published as the data becomes available. These are available on the study webpage at www.facs.nsw.gov.au/resources/research/pathways-of-care. Newsletters will be mailed to study participants. The findings are to be used to inform policy development and staff training. In any publication, information is presented in such a way that you or your child cannot be identified.

Who is conducting the study?

The NSW Department of Communities and Justice (DCJ) is conducting the study with the assistance of a consortium of researchers from the University of Sydney, University of NSW, University of South Australia, Kurungkurl Katitjin - Edith Cowan University, University of Wollongong, Sax Institute, University of Canterbury - New Zealand, Chapin Hall Centre for Children University of Chicago. The interviews are being conducted by Ipsos/I-view www.i-view.com.au who are social research data collection experts. These researchers have experience conducting similar studies.

Ethics approvals

The study has been approved by the UNSW Human Research Ethics Committee (no. HC 210985) and the Aboriginal Health and Medical Research Council of NSW Ethics Committee (no. 2016/22). For more information about ethics approvals please see the study webpage.

Where can I get support?

Phone **1300 364 277** for Relationships Australia (www.relationships.org.au/) an organisation providing relationship support services.

Phone **1300 130 052** for Parent Line (www.parentline.org.au/) an organisation providing telephone counselling, information and referral.

Where do I find more study information?

Phone **1800 997 960** (free call) for NSW Department of Communities and Justice (DCJ) who are managing the study.

Phone **1800 105 088** (free call) for Ipsos/I-view who are conducting the interviews.

Please also visit our study webpage for more information: www.facs.nsw.gov.au/resources/research/pathways-of-care.

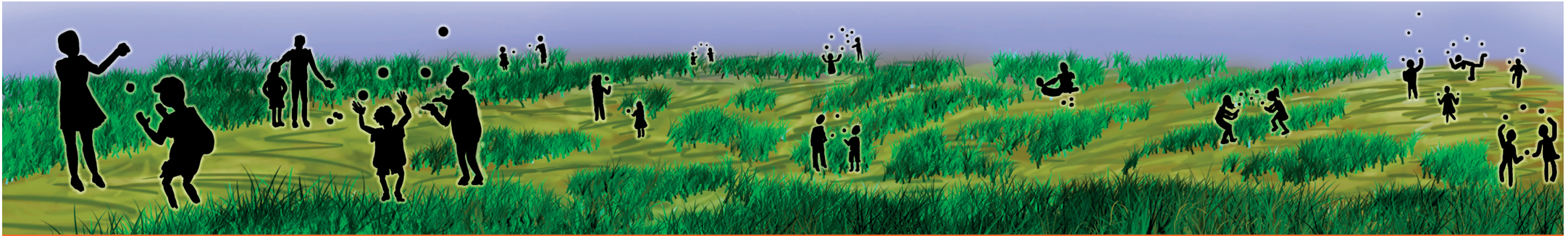


Information for Parents

Pathways of Care Longitudinal Study

A study about improving the lives
of children & young people





The artwork was created by a young person who grew up in care.

Pathways of Care Longitudinal Study

You are invited to participate in an important study on children and young people who have experienced out-of-home care (OOHC) in NSW.

The Pathways of Care Longitudinal Study is helping us learn more about children and young people's experiences, development and wellbeing.

Knowledge gained from this study is being used to provide better services to parents, carers, children and young people and to train staff who work with families.

This study includes children and young people who are in care as well as those who have been restored to their parents.

We are inviting carers and parents to participate in the 6th round of interviews for this study. You may have been interviewed about 2 years ago, or you may be new to the study.

How was my child selected for this study?

Children and young people 0-17 years entering OOHC on final Children's Court orders for the first time between May 2010 and October 2011 were selected to participate in this study.

Parents who are new to the study

Participation in this study is voluntary and if you do take part, you do not have to answer all the questions. Your child may have participated in earlier rounds of interviews when they were in care.

Before you agree to be part of this study, a researcher from the NSW Department of Communities and Justice (DCJ) will contact you by telephone after you receive a letter and information. If you agree, your contact details will be securely transferred to Ipsos/I-view who is conducting the interviews. Ipsos/I-view are social research data collection experts. For more information visit www.ipsos.com.au.

A qualified Ipsos/I-view researcher will then contact you to invite you to join the study and organise a time and a place to conduct the interview.

Before each interview you will be asked for your consent. You can withdraw your consent and discontinue your participation at any time.

Parents who completed the last interview

The last round of interviews for this study were conducted about two years ago. We would now like to invite you to participate in the 6th round of interviews.

What does participation involve?

The interview focuses on your child's health, behaviour, development, wellbeing and experiences. You will also be asked about the services and support your family receives and your family's situation.

During the interview, your answers are recorded on the interviewer's computer. There are some questions for you to complete on the computer yourself. The interviewer also documents their observations of the interview and the setting.

The interview is expected to take about 1.5 hours and you will receive a \$50 gift voucher as a thank you for giving up your valuable time to take part.

Please see a short video about the study www.facs.nsw.gov.au/resources/research/pathways-of-care/videos

What about my family's privacy?

Information is transferred from the interviewer's computer to a secure database that keeps names and other identifying information separate from your answers. Your contact details are only used to stay in touch with you.

All information gathered from people in the study remains confidential, except as required by law (eg. if the child's safety, welfare or wellbeing is of concern). Only authorised research staff have access to the data. It is not possible to identify anyone from the data.