

NSW child protection reports involving children with teenage parents in 2016-17

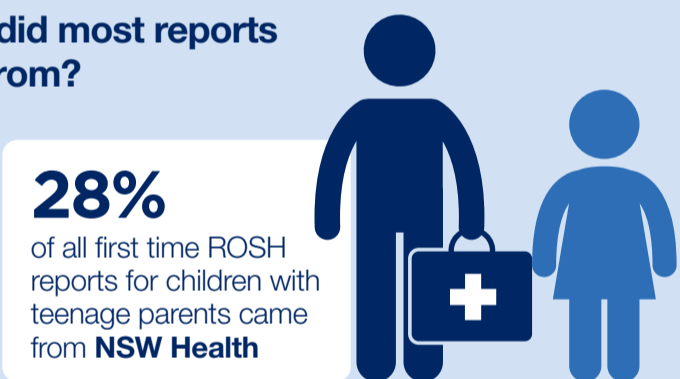
Key findings from an analysis of children who were reported to NSW Family and Community Services (FACS) in 2016-2017 as being at risk of significant harm (ROSH), and had at least one teenage parent at the time of the report.

Who was reported?

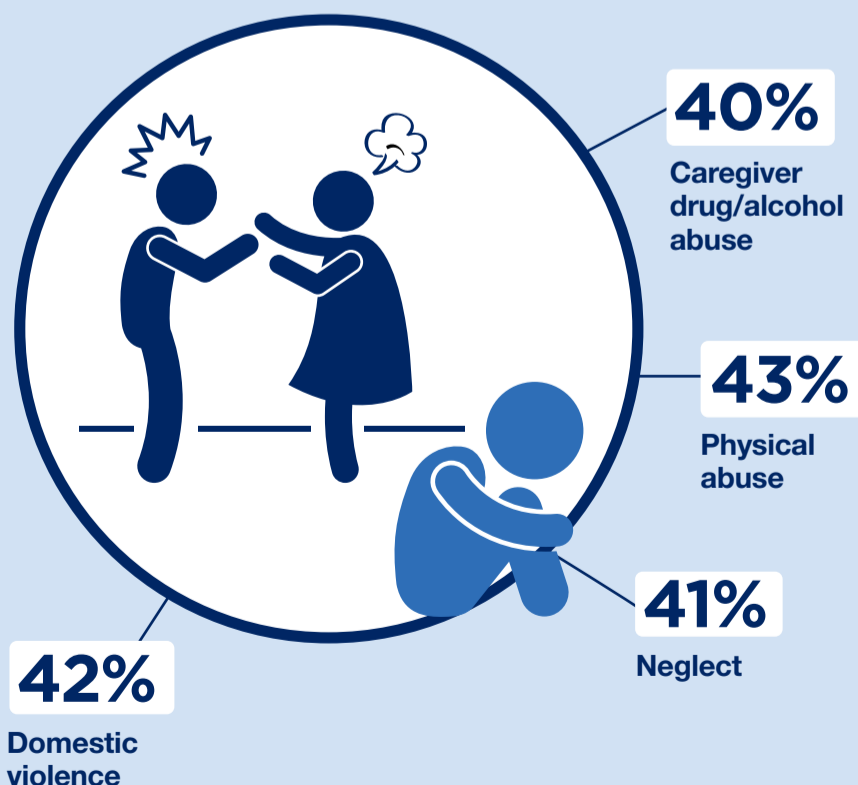


Children reported at ROSH who have teenage parents are more likely to be involved in a **cycle of intergenerational abuse and neglect**

Where did most reports come from?



What were the key reported issues?



Notes

- The data were sourced from the FACS client information system relating to child protection and out-of-home care – CIW - KiDS snapshot environment, 2016-17.
- These figures were sourced from the FACSIAR Brief, 'NSW child protection reports involving children with teenage parents in 2016-17'.
- This infographic was produced by FACS Insights Analysis and Research, part of the NSW Department of Communities and Justice. Further publications and statistics can be found on the [DCJ publications and resources page](#).

How did FACS respond?

