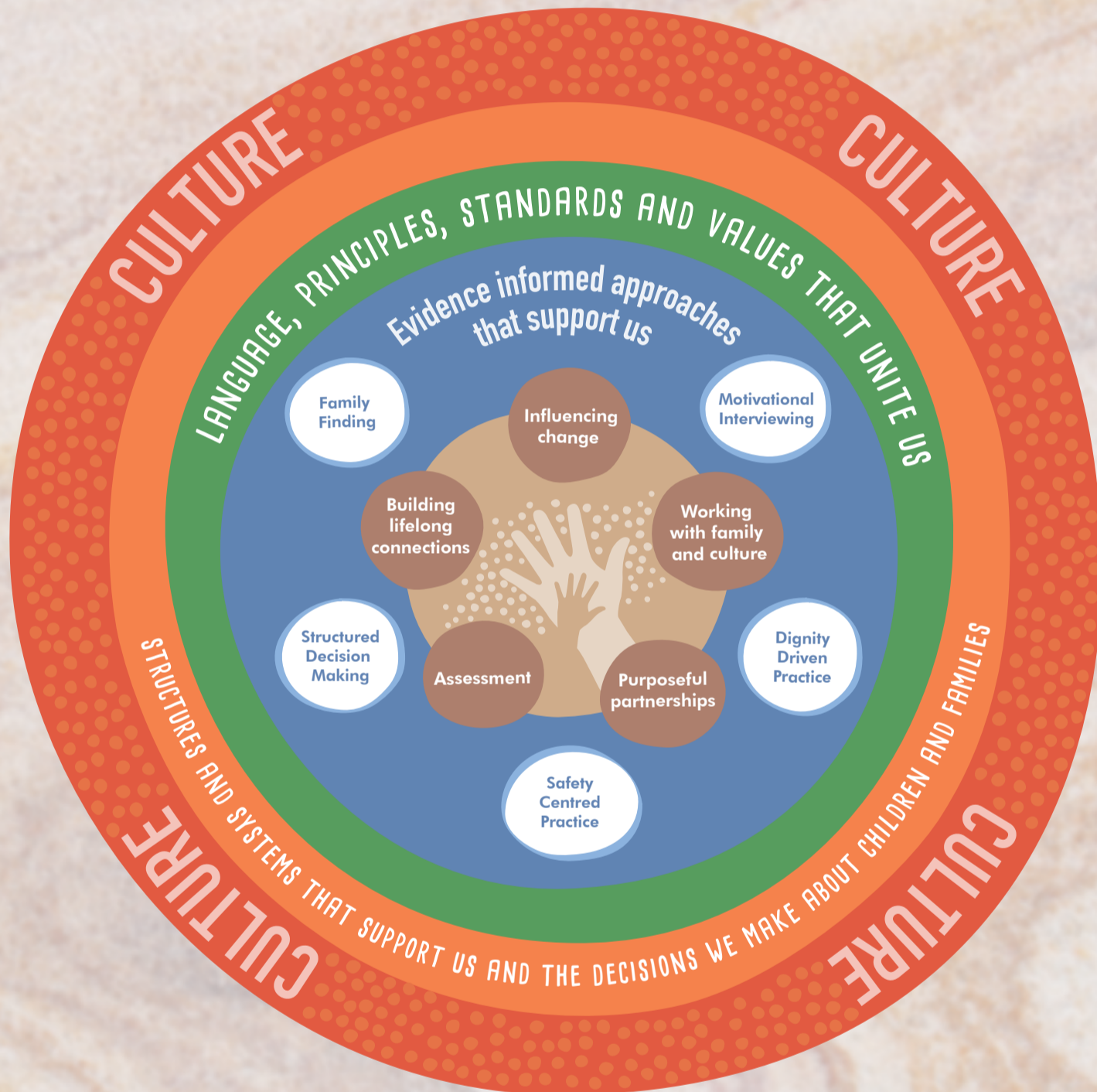


NSW PRACTICE FRAMEWORK

Justice Doing • Dignity Giving • Family Seeing



PRACTITIONER MANDATE

We build relationships that are focused on children. We work hard to give dignity, partner with parents, families and communities, and use collective wisdom, skills and courage to keep children safe.

LEADERSHIP MANDATE

We lead with moral courage to inspire and guide practice. We support practitioners and take collective responsibility for the decisions they make. We model willingness to reflect and work hard to create open cultures where critique improves outcomes for families.

AGENCY MANDATE

We work in solidarity to create a system that supports meaningful change for families. We partner with practitioners, communities and the sector to improve practice and outcomes for children and their families.



**Family &
Community
Services**



We acknowledge the traditional custodians of the lands on which we work.