

# Updated TEI Program Specifications

Early Intervention Evidence and Strategy team

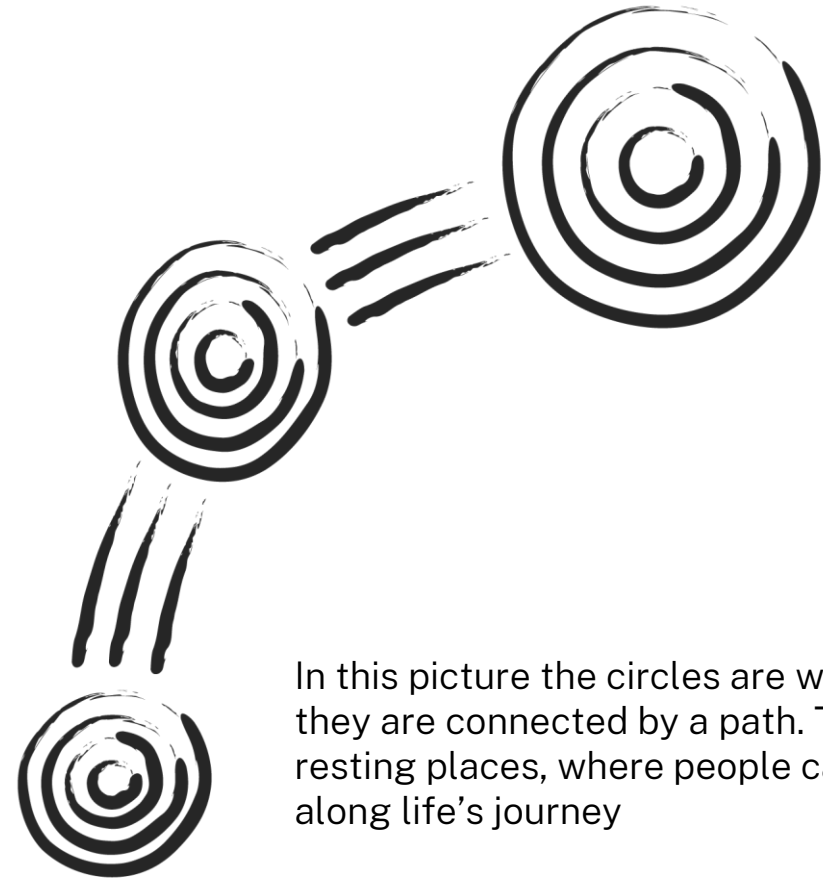
Updated July 2024



# ACKNOWLEDGEMENT OF COUNTRY

I acknowledge the Traditional Custodians of the various lands on which we work today and the Aboriginal and Torres Strait Islander people participating in this meeting.

I pay my respects to Elders past, present and emerging, and recognise and celebrate the diversity of Aboriginal peoples and their ongoing cultures and connections to the lands and waters of NSW.



In this picture the circles are waterholes and they are connected by a path. This represents resting places, where people can seek support along life's journey

# Overview of key changes to the Specifications

1. Integrating TEI and FCS into one program.
2. Simplifying and streamlining DEX reporting.
3. Family Connect and Support maintained as a specific model.
4. Increasing the focus on early intervention.
5. Embedding evidence in the program including through program wide, program logics.
6. Increased focus on cultural safety including outcomes for Aboriginal people in the TEI Client Outcomes Framework.
7. Inclusion of TEI service system outcomes and program requirements, including a greater focus on flexibility.
8. New name for the program.



# Who is TEI for?

The target population for the TEI program is children, young people, families and communities within NSW who are in need.

## TEI target groups

- Aboriginal children, young people, families and communities.
- 0-5 year olds.
- Children and young people at risk of disengagement from school, family and community.
- Young parents with known vulnerabilities or who are experiencing a number of hardships.
- Children and young people affected by a mental health condition/s.



# Streamlined Program Activities and Service Types



Program activity	Community Strengthening	Family Connect and Support	Wellbeing and Safety
<del>Program activity</del>	<del>1. Develop community connection s</del> <del>2. Provide a community centre</del> <del>3. Provide community support s</del>		<del>4. Provide targeted support</del> <del>5. Provide intensive or specialist support</del>
Service types	<ul style="list-style-type: none"> <li>• advocacy and support</li> <li>• <del>business planning</del></li> <li>• community engagement</li> <li>• community sector coordination</li> <li>• <del>community sector planning</del></li> <li>• education and skills training</li> <li>• facilitate employment pathways</li> <li>• Indigenous advocacy/support</li> <li>• Indigenous community engagement</li> <li>• Indigenous healing <b>activities</b></li> <li>• <del>Indigenous social participation</del></li> <li>• <b>workshops</b></li> <li>• information/advice/referral</li> <li>• social participation</li> </ul>	<ul style="list-style-type: none"> <li>• active holding</li> <li>• <del>brokerage</del></li> <li>• <del>case plan completed</del></li> <li>• family capacity building</li> <li>• <del>family group conferencing</del></li> <li>• information/advice/referral</li> <li>• <del>intake/assessment</del></li> <li>• <del>referral received</del></li> </ul>	<ul style="list-style-type: none"> <li>• counselling</li> <li>• education and skills training</li> <li>• family capacity building</li> <li>• Indigenous support playgroups</li> <li>• <del>Indigenous social participation</del></li> <li>• information/advice/referral</li> <li>• <del>intake/assessment</del></li> <li>• <del>material aid</del></li> <li>• mentoring/peer support</li> <li>• parenting programs</li> <li>• specialist support</li> <li>• supported playgroups</li> <li>• <b>youth individualised support</b></li> </ul>

# Family Connect and Support

- FCS evaluation provided strong rationale for maintaining FCS as a specific service model.
- The detail in Family Connect and Support specifications has significantly reduced.
- There is greater emphasis on practice documents designed with providers and tested with families - the Common Assessment Framework and Tool.
- Minor changes proposed including – increasing program timeframes, removing the weighted referral system and associated reporting (service types).
- FCS providers are not required to develop their own program logic.



# Embedding evidence into the program

- Five **program logics** reflect evidence across the spectrum of the early intervention program:
  1. Cultural Safety and Wellbeing
  2. Community Strengthening
  3. Family Connect and Support
  4. Wellbeing & Safety – Children and Families
  5. Wellbeing & Safety – Young people
- TEI service providers should use these program logics to develop their individual program logics.
- Cultural safety and wellbeing should be embedded in all service delivery. A separate program logic at the service level is not required.
- FCS providers not required to develop an individual program logic.
- We are embedding a core components approach into service delivery for the Wellbeing and Safety program activity for children and families.



# Preventing Child Maltreatment (PCM) core components and service types



Core Component	Service types (Based on 2019 Program Specifications and current service types)
Engagement	All service types
Case management	Family capacity building Information/advice/referral Intake/assessment Material aid Specialist support
Parental education coaching & modelling	Education & skills training Family capacity building Indigenous supported playgroups Parenting programs Supported playgroups
Parenting self-care & personal development	Counselling Family capacity building Specialist support
Building supportive relationships & social networks	Family capacity building Indigenous supported playgroups Indigenous social participation Mentoring/peer support Parenting programs Supported playgroups



# Wellbeing and Safety program activity - Parenting Programs and Supported Playgroups

- If delivering parenting programs or supported playgroups, providers are expected to use the evidence and select from the list of evidence-informed models where possible.
- Exception for Indigenous parenting programs and Indigenous supported playgroups.
- The draft list of evidence-informed parenting programs is now available on the TEI website for consultation.





# Strengthening cultural safety

- The Program Specifications detail how the program will achieve this at a policy, service and practice level.
- The new Specifications include a Cultural Safety and Wellbeing program logic which has six critical elements of cultural safety found through the Cultural Safety and Wellbeing evidence review, and the eight common features from the Aboriginal-led early support evidence review.
- Providers will be expected to embed the principles of the program logic in their service design and delivery.
- The Program Specifications also incorporate the principles of Indigenous Data Sovereignty and Governance.
- Outcomes for Aboriginal people will be co-designed with ACCOs and Aboriginal staff from non-ACCO services for inclusion in the TEI client outcomes framework.



# Introducing Service System Outcomes and program requirements



## TEI Service System Outcomes

- strengths based
- flexible and responsive
- culturally safe
- capable
- collaborative
- person centred
- evidence informed

## Program Requirements

- supporting the cultural safety and wellbeing of Aboriginal people
- supporting the cultural safety and wellbeing of CALD communities
- flexible timeframes
- effective engagement and assessment
- referral pathways and sector collaboration
- referrals to early years universal services
- free and accessible (*new addition since early June 2024*)

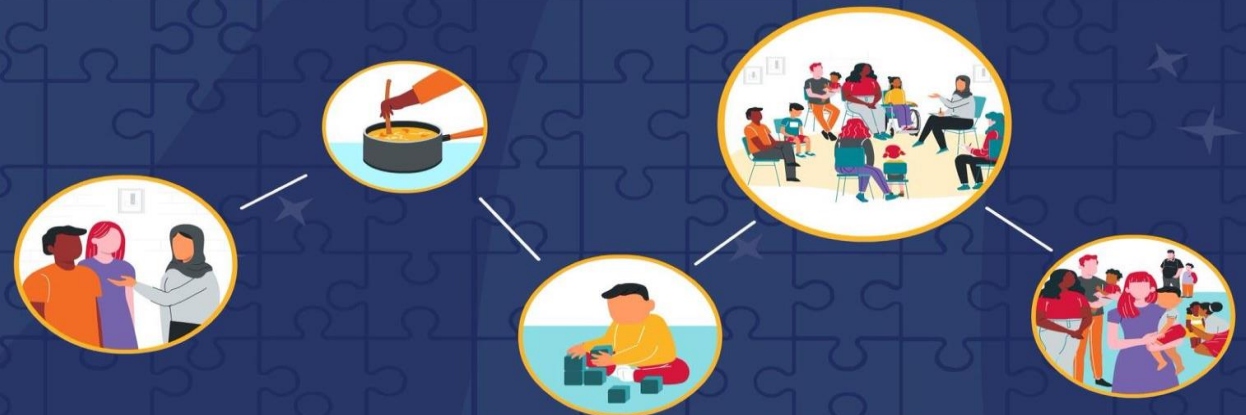
# Considerations for a new name

- Sector stakeholders, including Aboriginal organisations and communities, gave feedback that the term ‘intervention’ does not reflect strength based, and child and family centred practices.
- The new name should be for the people who receive TEI services. This is the most important audience.
- Keep it simple and use a verb, e.g. connect, link and support.
- Use strengths based and inclusive language.
- Name suggestions are open until 7 June 2024.



# Next steps – we want to hear from you!

1. Sector feedback **June to 27 September 2024**.
2. FCS and TEI final evaluation reports due in **second half of 2024** – sector consultation and amendments to the Specifications as required.
3. Final Specifications available in **early 2025**.



# Questions?

