

# Targeted Earlier Intervention & Family Connect and Support Recommissioning 2025

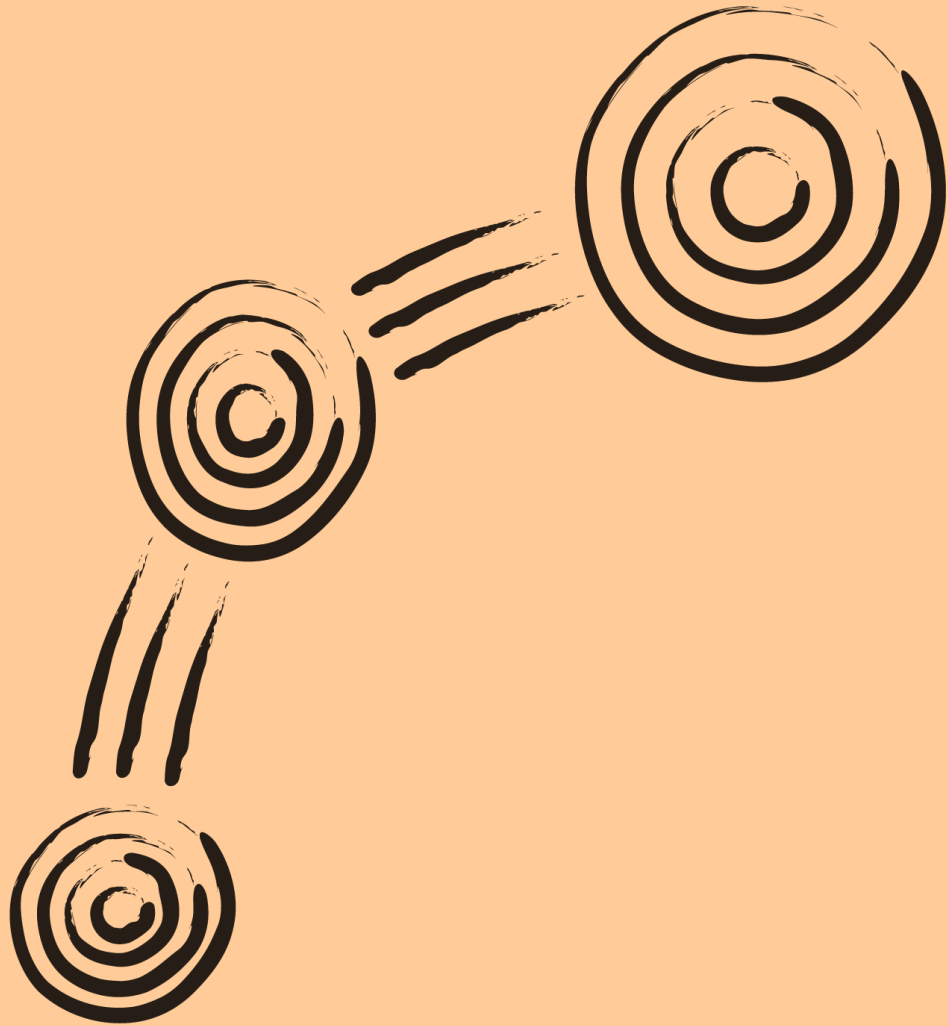
Anthony Shannon, Director Early Intervention, Volunteering, Youth & Carers



March 2024



# Acknowledgement to Country



I acknowledge the Traditional Custodians of the lands that we are all meeting from today. I pay my respects to Elders past, present and emerging and celebrate the diversity of Aboriginal peoples and their ongoing cultures and connections to the lands and waters of NSW.

I also acknowledge and pay my respects to our Aboriginal and Torres Strait Islander people/colleagues joining us today.



# Recommissioning 2025

- The NSW Government is committed to continuing to invest in early intervention programs that improve outcomes for vulnerable children, young people, families and communities.
- DCJ is recommissioning the Targeted Earlier Intervention (TEI) and Family Connect and Support (FCS) programs with new contracts to commence from 1 July 2025.
- The policy settings for recommissioning:
  - State and national priority reforms and initiatives:
    - *National Agreement on Closing the Gap, July 2020: Target 12 - children are not over-represented in the child protection system; & Priority Reform 2 - building the Community-Controlled Sector*
    - *Family is Culture, Independent Review of Aboriginal Children and Young People in OOHC in NSW, November 2019*
    - *Safe and Supported: National Framework for Protecting Australia's Children 2021-2031*
  - NSW Government commitment to the 30% ACCO early intervention investment target.
  - NSW Communities and Justice early intervention priorities and policies, including:
    - TEI Aboriginal-led Commissioning Principles
    - Aboriginal Case Management Policy

# Recommissioning Principles



## Aboriginal self-determination

- Embed Indigenous Data Sovereignty and Governance principles.
- Invest 30% of early intervention program funding with Aboriginal Community Controlled Organisations.
- Share decision-making and authority through service system co-design, and Aboriginal-led commissioning.
- Embed Aboriginal Case Management Policy principles.



## Flexible and holistic service system

- Create a streamlined service system that is family and community focused.
- Build a culturally safe service system.
- Target resources to the greatest need.



## Evidence informed practice approach

- Use evidence to inform service design including data, practitioner expertise, client and community voice.
- Drive evidence and data driven practice and decision-making.
- Provide accessible data and evidence of what works.



## Continuous improvement approach

- Enhance sector workforce capabilities.
- Support consistent and quality data for better planning.
- Build the evidence of what works.

# Draft Aboriginal-led Commissioning Principles

Recommissioning work with ACCOs will be guided by Aboriginal-led commissioning principles:



1. Culture is at the heart of everything we do

DCJ recognises and values the importance of Aboriginal cultures, knowledge and diverse experiences of Aboriginal people, including where they fit with family, community and society.

Cultural practices such as a collective community focus on child rearing, the importance of Elders and spiritual practices all contribute to effective family functioning and positive outcomes for children. This is why culture needs to be at the heart of everything we do to strengthen the ACCO sector.



2. Aboriginal families are at the centre of everything we design

Aboriginal families are pivotal to the wellbeing of Aboriginal communities and the continuation of culture.

Families are important in defining identity and a sense of connectedness to kinship and culture.

If we are to achieve the vision of safe and strong families, we must ensure families are at the centre of everything we design.



3. We share authority so decisions about Aboriginal people are made by Aboriginal people

Aboriginal-led commissioning, and partnerships with Aboriginal communities and ACCOs, will advance autonomy through equitable participation, shared authority and decision-making.

# Recommissioning Approach

- DCJ is recommissioning the TEI and FCS programs with new 5-year contracts commencing 1 July 2025.
- Recommissioning informed by sector feedback, evaluations, evidence reviews and implementation learnings.
- Recommissioning will be undertaken within existing local budgets.
- TEI and FCS will be merged into one program from July 2025, in order to streamline the programs and contracts. The newly combined TEI program will have three program activities:
  1. Community Strengthening
  2. Family Connect and Support
  3. Wellbeing and Safety
- Likely that the FCS model will remain largely the same with some minor changes, and TEI will undergo some streamlining of service types and data reporting to simplify the program.
- Recommissioning will target resources to the greatest need, with funding, where it becomes available, prioritised for investment with Aboriginal Community Controlled Organisations.
- Sector consultation on renaming the program.

# Recommissioning Timeline



## Understanding Need & Local Planning

Engage and collaborate with local stakeholders

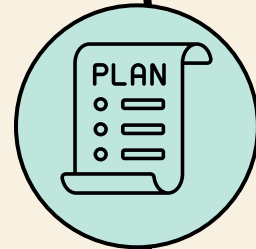
**April to July 2024**



## Local Service System Design

Design a local outcomes-focussed service system with the sector

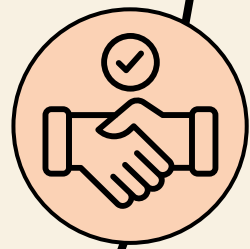
**June to September 2024**



## Recommissioning Plan

Finalise and approve Recommissioning Plan

**October to December 2024**



## Negotiate Contracts & Procurement

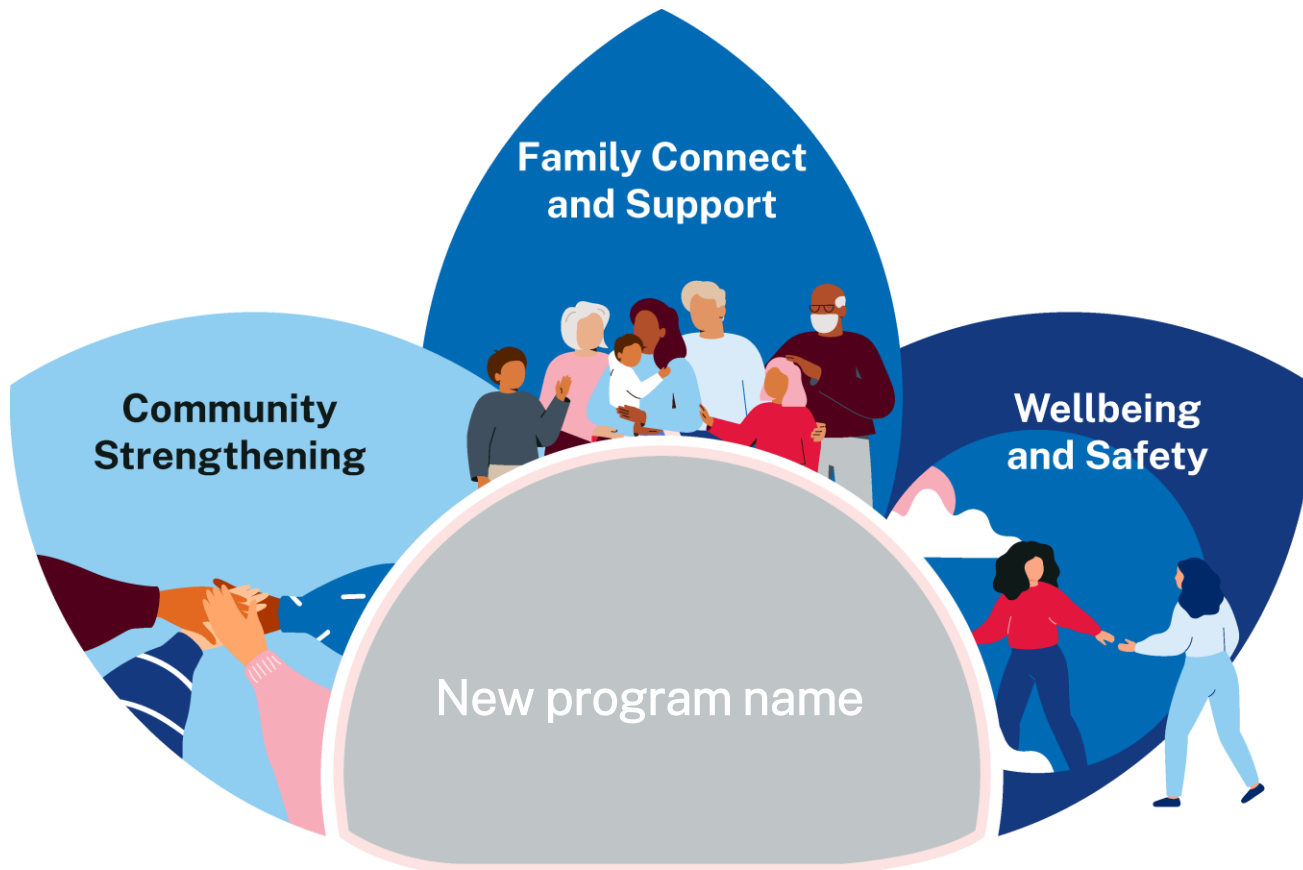
5 year contracts commence 1 July 2025

**January to March 2025**



# TEI Vision & Objectives 2025

**Vision:** Children, young people, families and communities in NSW receive the support they need, when they need it.



**Communities** are strengthened, and **vulnerable children, young people and families** can access local support based on their changing needs.

## TEI Program Objectives

- Aboriginal children, young people, families and communities have access to Aboriginal designed or co-designed, and Aboriginal delivered supports and services.
- TEI services are culturally safe, trauma aware and informed, and healing focussed.
- Families, children and young people's needs are met early to prevent the escalation of vulnerability.
- Families can access support early in the lives of their children and young people.
- Risk factors that lead to child abuse, neglect, and domestic and family violence are identified and addressed early.

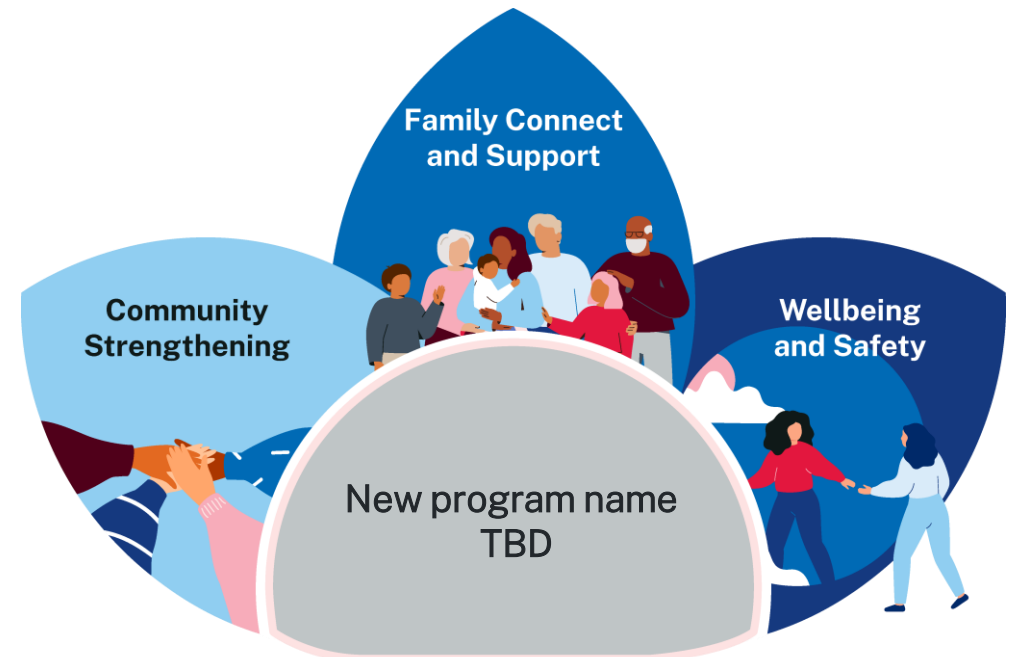


# Consultation – Program Name Change



Let us know any feedback or suggestions in the chat or later via [email-tei@dcj.nsw.gov.au](mailto:email-tei@dcj.nsw.gov.au)

- Given the purpose and target groups of the TEI and FCS programs overlap significantly, the current recommissioning cycle provides an opportunity to consolidate and streamline these programs into one.
- Early findings from both program evaluations also indicate the value of better integration of both programs, as well as contract streamlining.
- We're engaging with the sector about what we should call this new combined program.
- We already have feedback from the sector, Aboriginal stakeholders and communities who feel strongly that the term *intervention* does not reflect the strength's based, and child and family centred practices that underpin the work in TEI and FCS to provide early support to families and communities.



**Communities** are strengthened, and **vulnerable children, young people and families** can access local support based on their changing needs.

# Program Specifications & Outcomes Framework

---

- Updates to the program specifications and related documents informed by the TEI and FCS Evaluations, Evidence Reviews, sector feedback and learning from program implementation.
- Evaluations have highlighted the opportunity in program design to:
  - Clarify the role of the program (TEI)
  - Reduce duplication across program activities and streamline the program structure (TEI)
  - Improve the cultural safety of the program (TEI)
  - Refine outcomes including working with the Aboriginal Community Controlled Sector to develop culturally relevant outcomes (TEI)
  - Streamline and strengthen data collection and reporting (TEI & FCS)
  - Maintain FCS as a specific early intervention model (FCS)
  - Improve cultural referral pathways (FCS)

# Sector communication and engagement

## Current - Recommissioning Sector Forums:

- **Mon 18 March 2024** for FCS service providers, hosted by **DCJ**
- **Tue 19 March 2024** at 1pm - 2.30pm, hosted by **Fams**
- **Wed 20 March 2024** at 12pm - 1.30pm hosted, by **LCSA**
- **Thurs 21 March 2024** at 10am - 11.30am, hosted by **Youth Action**
- **Mon 25 March 2024** at 10am - 12pm for any TEI and FCS provider unable to attend the other forums, hosted by **DCJ**
- **Mon 8 April 2024** at 1 - 3pm for Aboriginal Community Controlled Organisations, hosted by **AbSec**
- **Tues 9 April 2024** at 1 – 2.30pm a follow up session, hosted by **Fams**
- **Wed 10 April 2024** at 10am - 11am for Aboriginal staff in ACCOs and non ACCOs, hosted by **DCJ**

## Ongoing:

- Early Intervention Central Council (Fams, AbSec, LCSA, Youth Action & NCOSS)
- TEI Inform Newsletter
- DCJ website – TEI webpage
- Other existing Peaks sector engagement's (contact Fams, AbSec, LCSA & Youth Action)
- DCJ local information sessions face-to-face or online as needed
- DCJ local planning sessions.

# Next Steps

Feb 2024

The Early Intervention  
Central Council met- 8  
February 2024

March 2024

Peaks and DCJ to run  
sector recommissioning  
information sessions - mid  
March 2024

TEI Inform newsletter on  
recommissioning- mid  
March 2024

Update DCJ TEI webpage  
with latest information on  
recommissioning, local  
data and Community  
Profiles - late March 2024

April 2024

DCJ to consult with sector  
on TEI Program  
Specifications and  
Outcomes Framework and  
Program Name - April 2024

DCJ Central Office attend  
local sector TEI  
information sessions and  
forums – April to June 2024

DCJ to commence local  
needs and planning, and  
service system re-design  
workshops with  
stakeholders – April to  
Sept 2024

# Questions?



Further questions or queries:

TEI website:

<https://dcj.nsw.gov.au/service-providers/deliver-services-to-children-and-families/targeted-earlier-intervention-program.html>

*Please contact your local Commissioning and Planning Officer in the first instance if you have any recommissioning questions.*

*Also feel free to reach out to your Peak for support.*

TEI email:

[tei@dcj.nsw.gov.au](mailto:tei@dcj.nsw.gov.au)