

[professionals.childhood.org.au](http://professionals.childhood.org.au)

# OurSPACE NSW

Specialist Outreach  
Trauma Therapeutic Support  
for Children in OOHC and their  
important relationships

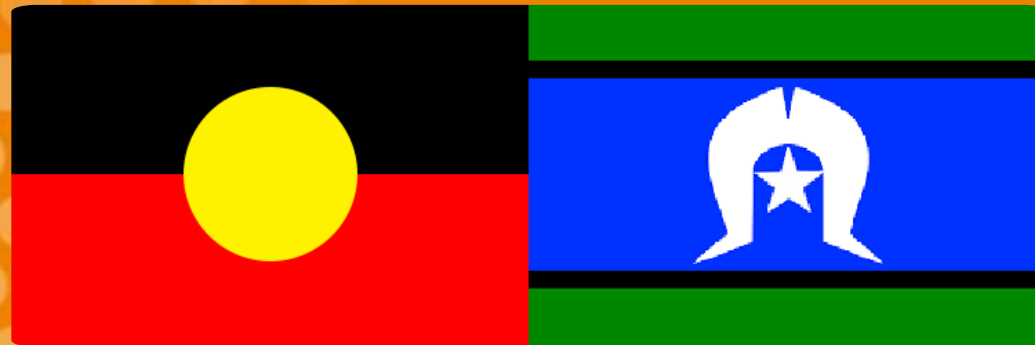


Communities  
& Justice



# Acknowledgment to Country

The Australian Childhood Foundation would like to acknowledge the Traditional Owners of the land on which this event is taking place, and Elders past, present and emerging. We would like to pay respect to the unique values of our First Nations people, and their continuing and enduring cultures which deepen and enrich the life of our nation and communities.



# The Australian Childhood Foundation



Training & workshops



We work directly with over 1000 children per day nationally



International Childhood Trauma Conference



Web resources



Graduate Certificate in Developmental Trauma



Services in every State



Advocacy & research

# OurSPACE NSW

- The OurSPACE Program directly addresses placement instability and builds relationship permanency for children and young people in out of home care regardless of location in NSW
- 55% of total number of children are Aboriginal and Torres Strait Islander
- Therapeutic Specialists travel to the child and move with them if their placement changes.
- 60% FTE Therapeutic Specialists are First Nations Professionals
- OurSPACE resources the network of adults to understand and respond to the unmet trauma needs.
- We create care teams that include Carers, Case Workers, School Teachers, and any important relationship to the child.



**1604**

referrals for direct outreach therapeutic support



**21,702**

total sessions



**97%**

of referrals accepted



**122**

number of children (cases) currently in program (at 15/08/2023)



**32,951**

hours of therapeutic support



**102**

children on the waitlist - 8 months wait time

### ACA MOST RECENT



**66**

Aboriginal children



**81**

Non-Aboriginal children



**327** Aboriginal children



**502**

Non-Aboriginal children



**352**

Aboriginal children



**271**

Non-Aboriginal children



**147**  
**TOTAL**



**9%**  
Of total referrals



**904**  
**TOTAL**



**51%**  
Of total referrals

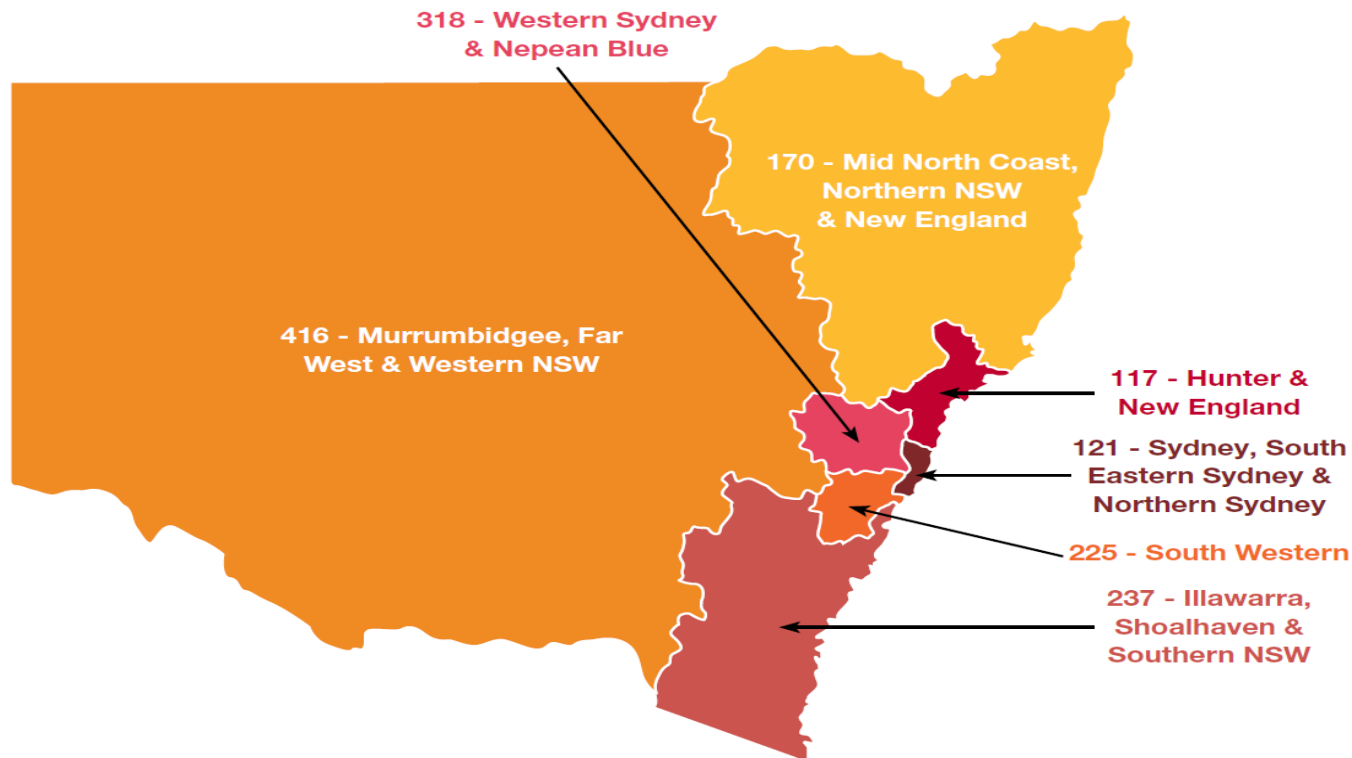


**629**  
**TOTAL**



**40%**  
Of total referrals

# District map by referral count (since start)



64

Children currently in the program are Aboriginal



58

Children currently in the program are not Aboriginal



55

Children currently in the program identify as male



66

Children currently in the program identify as female



11

Children currently in the program are aged 0-5yo



53

Children currently in the program are aged 6-10yo



58

Children currently in the program are aged 11-15yo



1

Children currently in the program identify as non-binary or non gender

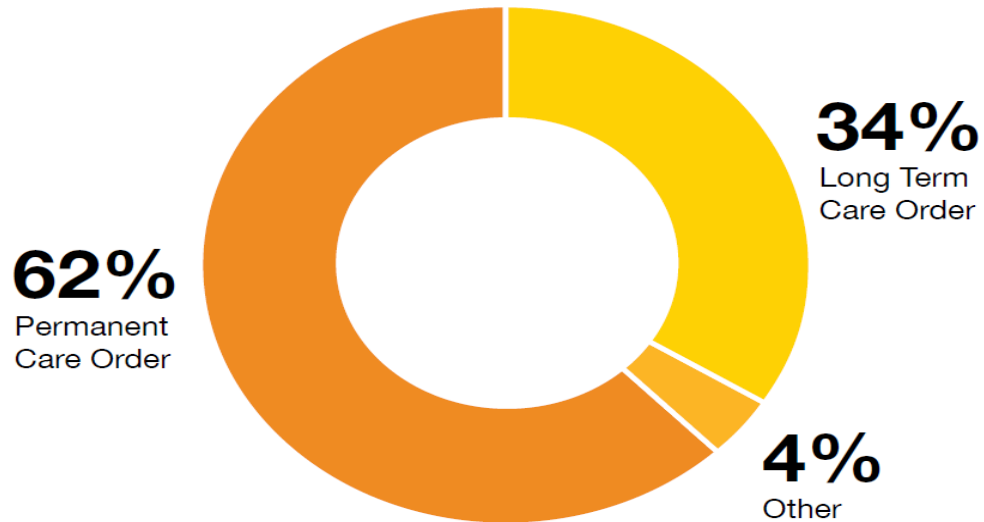


1

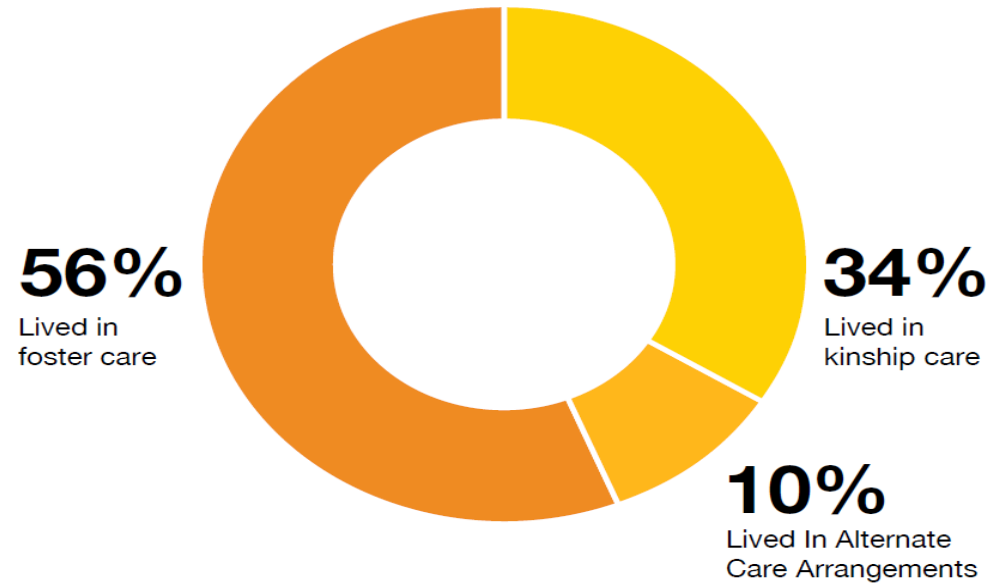
Transgender

# Most children in OurSPACE were on long term orders

Care responsibility for children and young people in OurSPACE



Living arrangements for children and young people in OurSPACE

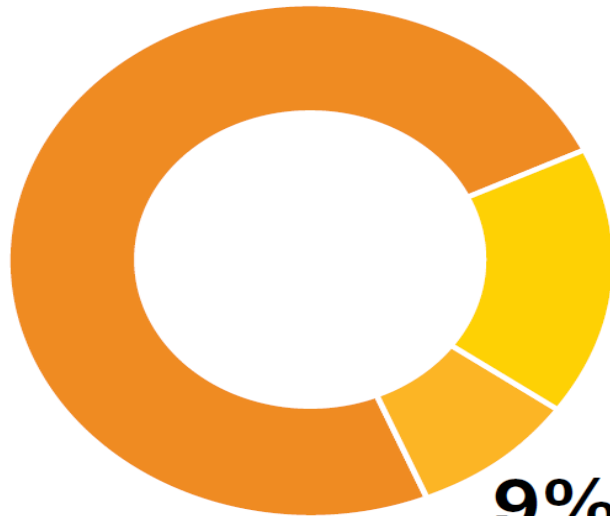


# Children in OurSPACE experienced significant placement instability

## Number of placements since coming into care

**74%**

Of children and young people in OurSPACE had 3-8 placements since coming into care



**17%**

Of children and young people in OurSPACE had 9 or more placements since coming into care

**9%**

Of children and young people in OurSPACE had 1-2 placements since coming into care

**78%**

Of children and young people in OurSPACE had lived in their placement for less than 12 months



**42%**

Of children and young people in OurSPACE had a quality of care incident in their placement leading to their removal from placement within the last six months





# Loss of Sibling Connection

**52%**

Of children and young people in OurSPACE had no contact or unplanned or sporadic contact with their siblings



**63%**

Of children and young people in OurSPACE had no contact or unplanned or sporadic contact with extended family

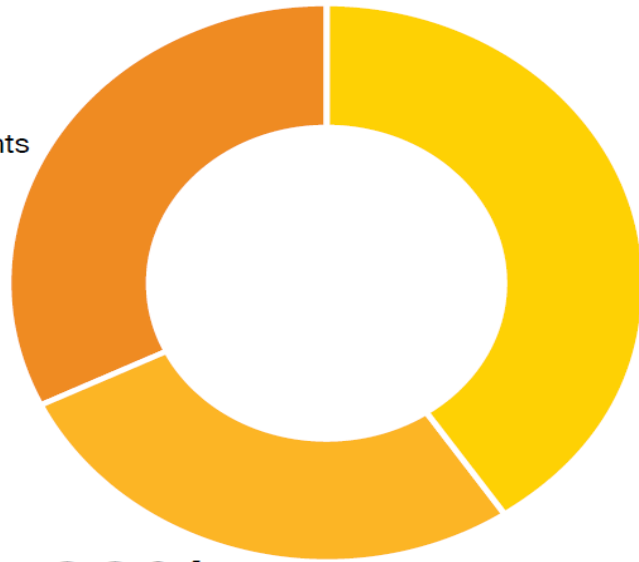


# Most Children experienced extensive abuse and neglect over a long period of time, beginning prior to the age of One.

## Period of abuse for children and young people in OurSPACE

**30%**

Multiple incidents and unknown



**48%**

More than 5 years

**98%**

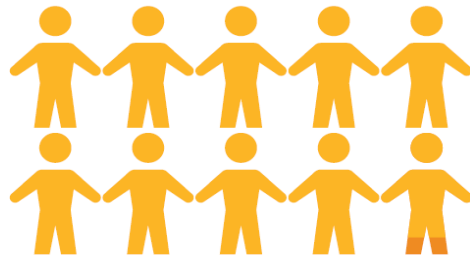
Of children and young people first experience abuse before 12 months old



# Children in OurSPACE experienced multiple domains of abuse and neglect

**97%**

Of children and young people in OurSPACE had experienced emotional and psychological abuse



**64%**

Of children and young people in OurSPACE had been subject to sexual abuse



**The top 5 forms of emotional/psychological abuse were:**

**68%**

Witnessing ongoing verbal conflict between parents

**61%**

Witnessing ongoing physical violence between parents

**59%**

Extreme neglect by caregivers

**58%**

Abandonment

**51%**

Emotional/psychological isolation

**98%**

Of children and young people in OurSPACE had experienced physical abuse ranging from being kicked, punched, hit with an object



# Most children were impacted significantly from experiences of abuse and neglect

**52%**

Of children and young people in OurSPACE had been diagnosed with a developmental delay



**47%**

Of children and young people in OurSPACE had suffered from failure to thrive early in their life



**84%**

Of children and young people in OurSPACE suffered from sleep disturbances



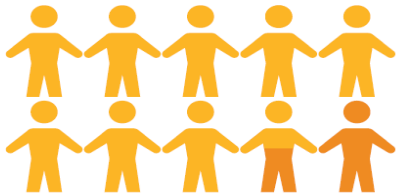
**84%**

Of children and young people in OurSPACE suffered from significant anxiety



**83%**

Of children and young people in OurSPACE suffered from poor self esteem



**86%**

Of children and young people in OurSPACE suffered from poor peer relationships



**69%**

Of children and young people in OurSPACE displayed severe physically aggressive behaviour



**27%**

Of children and young people in OurSPACE had engaged in harmful sexual behaviour



# OurSPACE supported most children to begin to heal

# FACSIAR - Measuring indicators of 'Home' and 'Safety' in OurSPACE program Jan 22

Sample of 184 12 months on from completion (94 of whom were Aboriginal (52%))

Aggregate of 419 ROSH reports over 12-month period prior to acceptance. An average of 4 ROSH reports each child.

80 (44%) had no further ROSH.

127 without any change of placement (70%)

*\*Data recorded 12 months prior and then 12 months post involvement in the OurSPACE program*

# Reduction in criminal activity

**79%** ↓

Children showed a reduction in trauma symptoms as a result of OurSPACE



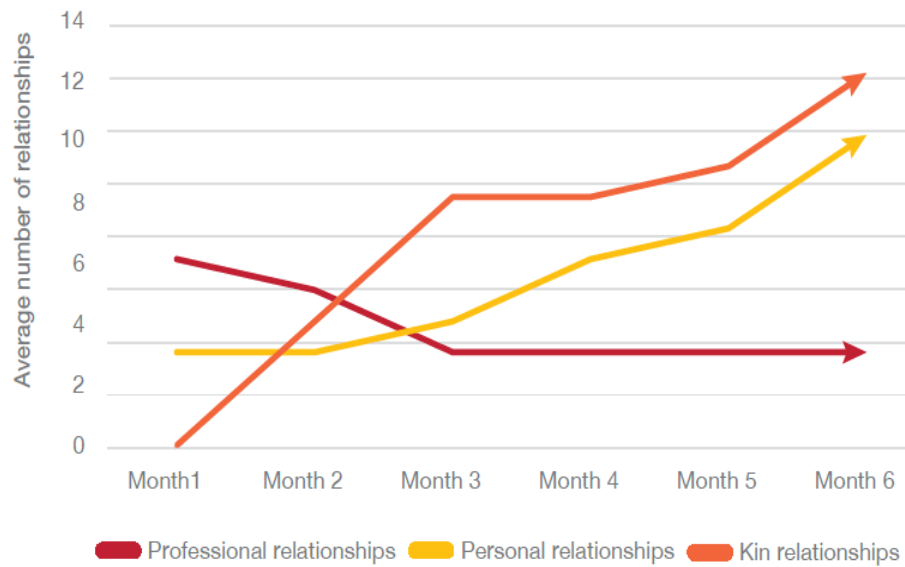
**84%** ↓

Children showed a reduction in criminal activity if they were involved in Youth Justice at time or referral to OurSPACE

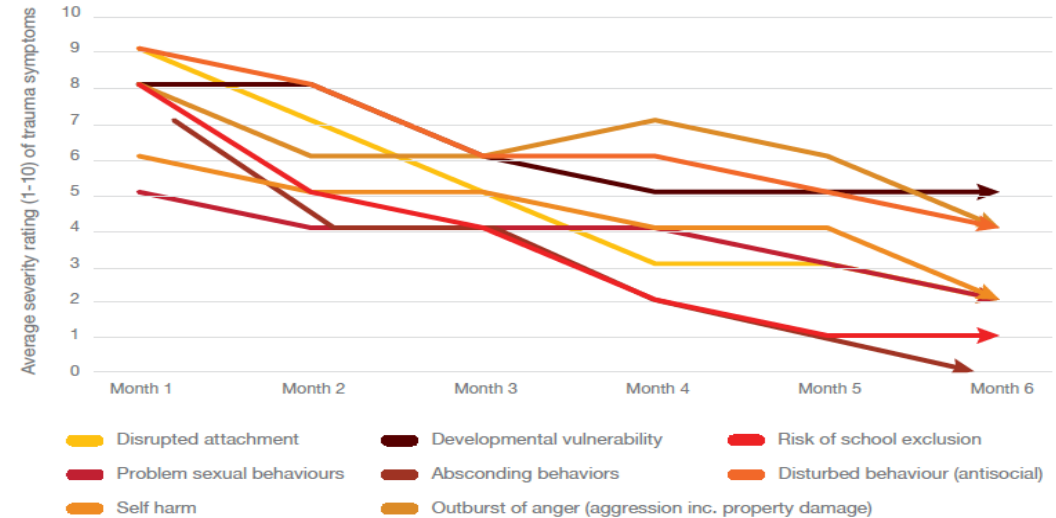


# Improvement in Relationship permanence and reduction in trauma symptoms

**OurSPACE improved the relationship permanence of children and young people**



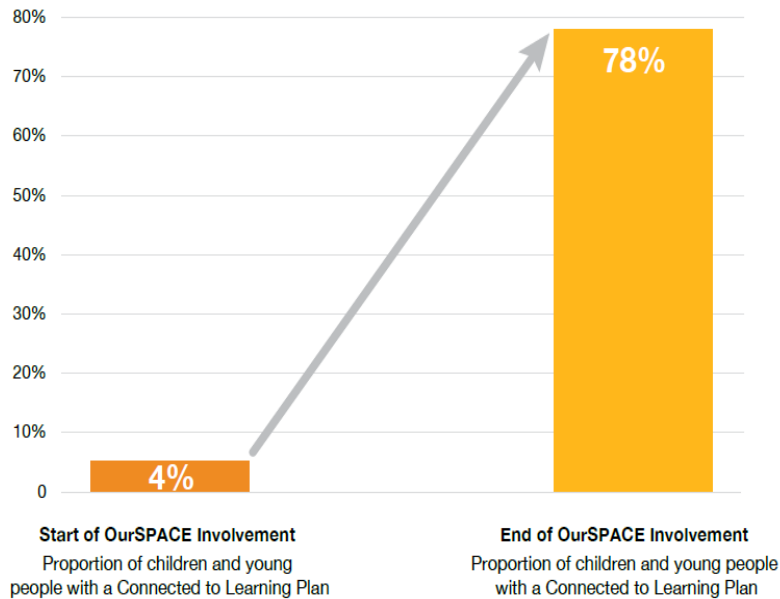
**OurSPACE reduced the severity rating of trauma symptoms for children and young people over six months**



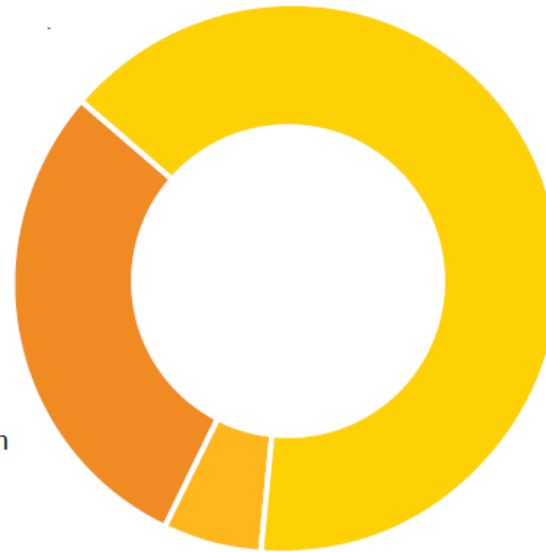


# Re-connection to learning

## OurSPACE increased proportion of children with a formal education plan



**29%**  
Of children and young people moved to vocational learning program



**65%**  
Of children and young people experienced an increase in school attendance

**6%** Of children and young people remain disengaged from the education system

# OurSPACE has supported the connection of Aboriginal children to Kin and Country

**72%**

Of Aboriginal children referred to OurSPACE engaged with family for the first time



**28%**

Of Aboriginal children referred to OurSPACE were restored to family permanently



**98%**

Of all Aboriginal clients received a cultural consultation prior to allocation



**74%**

Of Aboriginal clients increased their cultural connection to kin and country



**79%**

Of Aboriginal clients showed a significant reduction on trauma expressions (reported by carer)



**71%**

Of Aboriginal clients developed more meaningful connection to siblings (not living in the same placement)



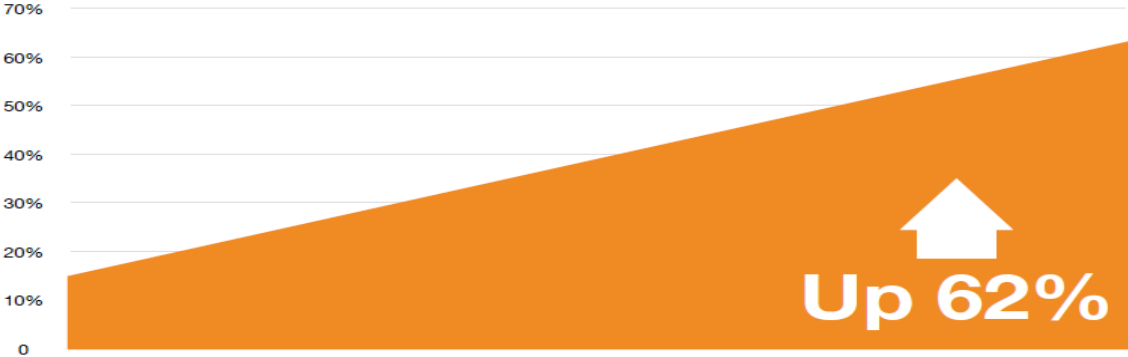
# Care teams were better resourced



**83%**

Of care teams were better equipped to understand the trauma need of children as a result of OurSPACE

## OurSPACE built the capacity of care teams to function effectively

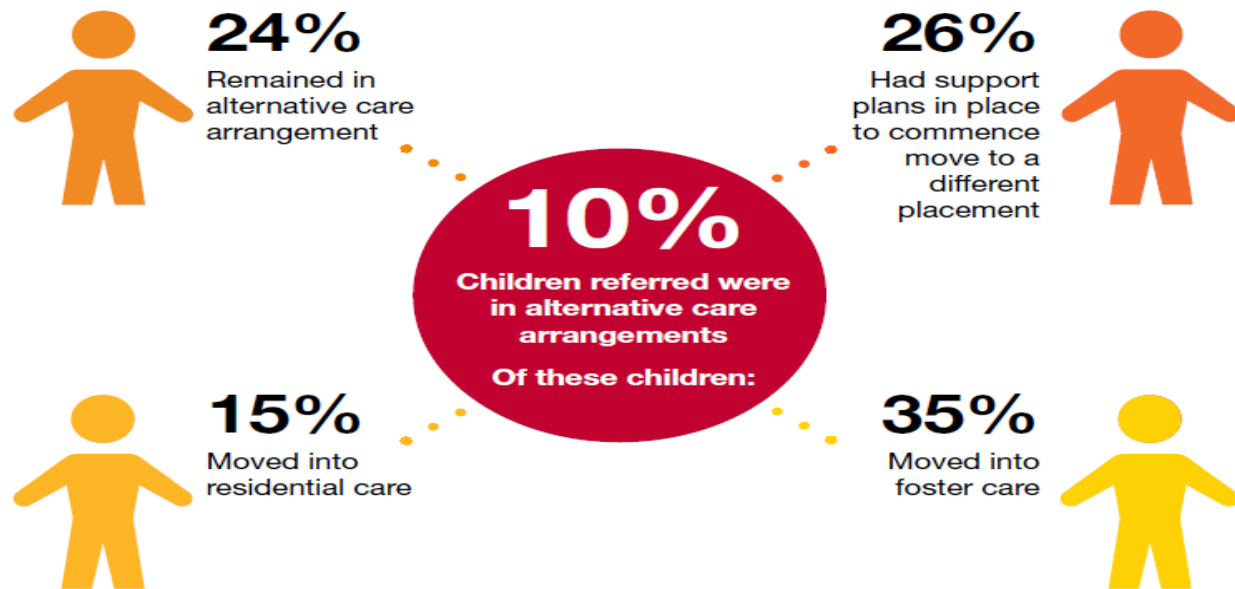


Proportion of care teams which were cohesive, trauma informed and proactive in their planning at start of OurSPACE involvement

Proportion of care teams which were cohesive, trauma informed and proactive in their planning at end of OurSPACE involvement

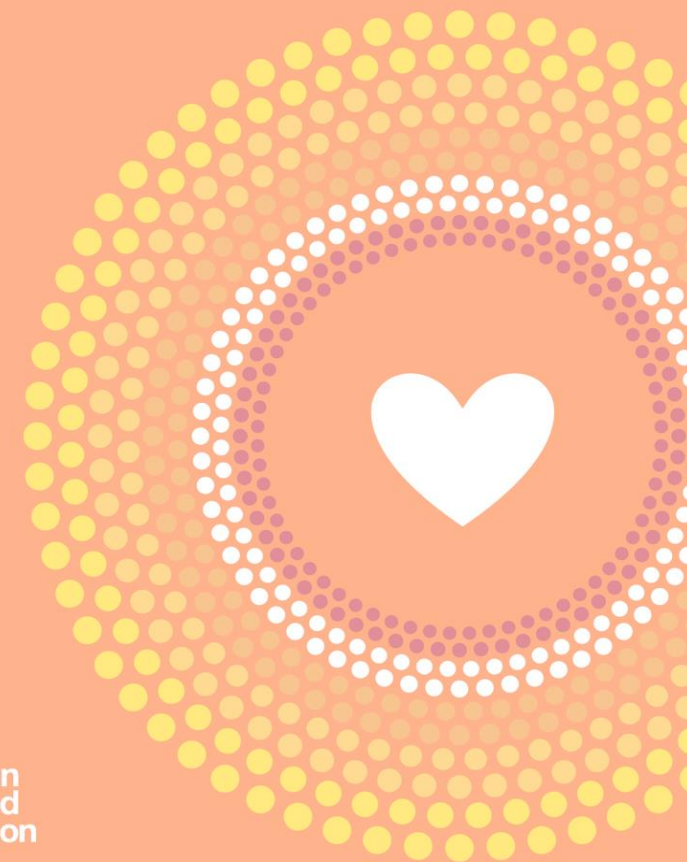
# ACA's

## 3.3 OurSPACE was effective in supporting transition of children out of ACA's



## Our SPACE+

A proposal to provide intensive therapeutic support to children, young people in Alternative environments of care



Australian  
Childhood  
Foundation

# Improvement in placement outcomes

**22%**

Of children were moved to a more stable placement



**54%**

Of children had their placement on referral stabilised

**7%**

Of children experienced no improvement and placement was at significant risk

**17%**

Of children continued to require intensive support to stabilise their care arrangements

“The biggest barrier to stable placements for children in OOHC is the misinterpretation of the language (behaviour) of the child and how those around them respond to it”

OurSPACE 2019

[professionals.childhood.org.au](http://professionals.childhood.org.au)

**OurSPACE**

1300 381 581

[intakeourspace@childhood.org.au](mailto:intakeourspace@childhood.org.au)

