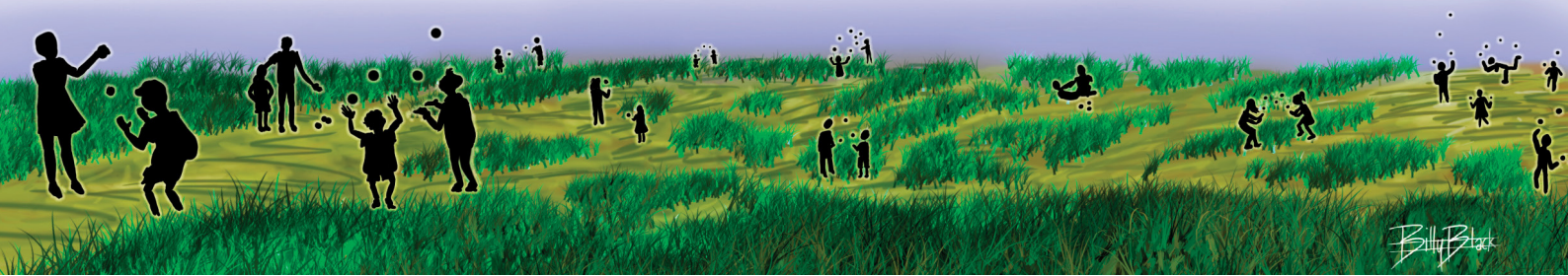


Your VOICE is important for this research study





Hello!

We are back again ... and getting ready for the next interview

An update on the Pathways of Care Longitudinal Study for young people

We will be contacting you again soon to ask if you would like to join in the interview for 18-25 year olds. It will be very similar to the previous ones. We just want to see how things have been going for you since we last saw you. It would be great if you could join in but it is up to you! This video www.dcj.nsw.gov.au/about-us/facsiar/pathways-of-care-longitudinal-study/watch-the-study-videos explains what the study is about.

Research creates new knowledge

By answering the study questions you are helping us to learn more about how to raise healthy and happy children and young people. To date, 5,881 interviews with children, young people and caregivers have been completed creating strong evidence to inform decisions. It is one of the biggest studies being done today about children and young people in Australia.

Thank you

A big thank you for joining in the research study. If you do take part in the 18-25 year old interview, you will receive a \$100 gift voucher for the time you spend helping the study. For more information, please visit the study webpage www.dcj.nsw.gov.au/about-us/facsiar/pathways-of-care-longitudinal-study or phone the DCJ researchers on **1800 997 960** or the Ipsos interviewers on **1800 105 088**. Thank you for joining in!



NSW Department of Communities and Justice | Ipsos/I-view Social Research | Sax Institute
University of Sydney | University of NSW | Kurungkurl Katitjin, Edith Cowan University
University of Wollongong | University of South Australia | University of Canterbury, New Zealand
Chapin Hall Centre for Children University of Chicago