



Statistical Publication

NSW Inmate Census 2021

Summary of Characteristics

Helen Tang and Simon Corben

Statistical Publication No. 50

March 2023

ISSN 2653-8164

Corrective Services NSW

Statistical Publication No. 49
ISSN 2653-8164

© Corrective Services NSW

Corrections Research, Evaluation and Statistics
Delivery, Performance and Culture
Corrective Services NSW
180 Thomas Street,
SYDNEY NSW 2000

Telephone: (02) 8346 - 1556

E-mail: simon.corben@justice.nsw.gov.au
research.enquiries@justice.nsw.gov.au

Web: <http://www.correctiveservices.justice.nsw.gov.au>

Table of Contents

Explanatory notes	i
1. Full-time custody inmates	
Statistical summary.....	3
Table 1.1 Demographic characteristics.....	4
Table 1.2 Legal status characteristics.....	5
Table 1.3 Characteristics of offences and sentences	6
Table 1.4 Inmate security classification.....	9
Table 1.5 Location and correctional centre security classification	10
Table 1.6 Country of birth	12
Table 1.7 Statistical area of last known address	16
2. Indigenous inmates	
Statistical summary – Indigenous inmates	19
Table 2.1 Demographic characteristics	20
Table 2.2 Legal status characteristics	21
Table 2.3 Characteristics of offences and sentences	22
Table 2.4 Inmate security classification	25
Table 2.5 Location and correctional centre security classification	26
Table 2.6 Country of birth – Indigenous inmates.....	28
Table 2.7 Statistical area of last known address	29
3. Most serious offence by aggregate sentence length (sentenced inmates) and time in custody (unsentenced inmates)	
Table 3.1.1 Most serious offence by aggregate sentence imposed – Sentenced male inmates in full-time custody	33
Table 3.1.2 Most serious offence by aggregate sentence imposed – Sentenced female inmates in full-time custody.....	34
Table 3.1.3 Most serious offence by aggregate sentence imposed – All sentenced inmates in full-time custody	35
Table 3.2.1 Most serious offence by aggregate sentence imposed – Sentenced male inmates in full-time custody (percentage)	36
Table 3.2.2 Most serious offence by aggregate sentence imposed – Sentenced female inmates in full-time custody (percentage)	37
Table 3.2.3 Most serious offence by aggregate sentence imposed – All sentenced inmates in full-time custody (percentage)	38
Table 3.3.1 Most serious offence by time in custody – Unsented male inmates in full-time custody	39
Table 3.3.2 Most serious offence by time in custody – Unsented female inmates in full-time custody.....	40
Table 3.3.3 Most serious offence by time in custody –	

All unsentenced inmates in full-time custody	41
--	----

4. Population trends

Table 4.1	Trends in the total inmate population by place of detention as at 30 June; 1982 to 2021 (includes periodic detainees)	45
Table 4.2	Trends in the gender of the inmate population as at 30 June; 1982 to 2021 (includes periodic detainees).....	46
Figure 1	Trends in the gender of the inmate population (includes periodic detention) as at 30 June each year.....	47
Figure 2	Trends in the inmate custodial programs (includes periodic detention) as at 30 June each year.....	47
Table 4.3	Trends in the Aboriginal/TSI status of inmates as at 30 June; 1982 to 2021 (includes periodic detainees)	48
Table 4.4	Trends in the legal status of inmates as at 30 June; 1982 to 2021 (includes periodic detainees)	49
Figure 3	Trends in the Aboriginal/TSI inmates (includes periodic detention) as at 30 June each year	50
Figure 4	Trends in the legal status of inmates (includes periodic detention) as at 30 June each year	50
Table 4.5	Trends in the Aboriginal/TSI inmate population by gender as at 30 June; 1982 to 2021 (includes periodic detainees)	51
Table 4.6	Trends in the Aboriginal/TSI inmate population by gender and custodial program as at 30 June; 1982 to 2021 (includes periodic detainees)	52
Table 4.7	Trends in the security classification of convicted inmates; 1983 to 2021 (excludes periodic detainees).....	53
Table 4.8	Trends in most serious offence (ANZSOC); 1982 to 2021 (includes periodic detainees)	54
Figure 5	Trends in the security classification of convicted inmates (excludes periodic detention) as at 30 June each year.....	55
Figure 6	Trends in the most serious offence (includes periodic detention) as at 30 June each year.....	55
Table 4.9	Trends in age profile of inmates as at 30 June; 1982 to 2021 (includes periodic detainees)	56
Figure 7	Trends in the age profile of inmates (includes periodic detention) as at 30 June each year	57
Figure 8	Trends in the age profile of Aboriginal/TSI inmates (includes periodic detention) as at 30 June each year.....	57

Appendices

Appendix 1: Australian and New Zealand Standard Offence Classification (ANZSOC), 2011 (3 rd edition)	61
Appendix 2: Offence grouping for trends	65

EXPLANATORY NOTES

(a) General information

The New South Wales Inmate Census was conducted as part of the National Australian Prison Census for 30 June 2021. The first Australian National Prison Census was conducted on 30 June 1982 and both the NSW and National inmate Censuses have been conducted annually since that time. Previous publications of the NSW Inmate Census can be obtained from the Corrective Services NSW website (<http://www.correctiveservices.justice.nsw.gov.au>). National prison Census publications are published by the Australian Bureau of Statistics (ABS) (see *Prisoners in Australia ABS Catalogue 4517.0*).

In previous years Section 1 of this report incorporated statistics on all inmates including periodic detainees and Section 3 provided a detailed profile of the periodic detainee population. Following abolition of periodic detention as a sentencing option in 2010 the periodic detention population has declined significantly. Reforms enabling the re-sentencing of offenders subject to a periodic detention order came into force in September 2018. Following these changes, all periodic detention orders have ceased to apply from this date. The scope of this report ceases to incorporate periodic detainees and the section describing the characteristics of these offenders has been removed.

(b) Scope of data collection

This publication contains summary statistics of inmates managed by Corrective Services NSW (CSNSW) who were held in full-time custody in New South Wales at midnight on 30 June 2021. Inmates temporarily absent from a correctional centre (as at midnight on Census night) under s26 of the *Crimes (Administration of Sentences) Act, 1999* have been excluded with the exception of those inmates housed at Parramatta Transitional Centre and Bolwara House Transitional Centre (Emu Plains). Police custody 'Police-bail refused' detainees held in Police/court complexes as at midnight on Census night under the management of CSNSW (as provided under Part 13 of the *Crimes (Administration of Sentences) Act 1999*) are also included.

Prior to 2007, the scope of the NSW Inmate Census was strictly based on inmates held in gazetted correctional centres and periodic detention centres as at midnight on 30 June each year. Despite the fact that CSNSW had managed inmates in Police/Court complexes since 1992 and transitional centres since 1996, these inmates were not considered for inclusion in the scope of the Census data collection because they were not held in gazetted correctional centres. Between 1997 and 2006, this publication series included these statistics as separate totals for inmates held in Police/Court complexes and transitional centres. Since 2006 these inmates have been incorporated into the section detailing full-time custody inmates.

Offenders residing in non-custodial facilities managed by CSNSW such as Community Offender Support Program Centres (COSP Centres) and community residential facilities (such as the Balund-a facility at Tabulam) are excluded from the scope of the inmate Census as these offenders are not held in custody. These offenders are incorporated within the scope of the NSW Community Offender Census (available at <http://www.correctiveservices.justice.nsw.gov.au>). Persons held at the NSW Department of Health's Forensic Hospital (adjacent to Long Bay Correctional Complex) are also excluded as this facility is not a gazetted correctional centre nor is it managed by CSNSW.

In previous years the scope for this publication and the ABS's National Australian Prison Census were misaligned. As a Census of adult prisoners, the National Australian Prison Census excluded all inmates (regardless of their age) who were held at Kariong Juvenile Correctional Centre. CSNSW managed the Kariong Juvenile Correctional Centre between December 2004 and May 2015. Since CSNSW ceased managing Kariong Juvenile Correctional Centre this discrepancy between scope of the ABS and this publication has been removed.

Reforms for the re-sentencing of offenders who were subject to a periodic detention order came into effect on 24 September 2018 under the *Crimes (Sentencing Procedure) Amendment (Sentencing Options) Act 2017 No 53*. From that date all periodic detention orders ceased to apply and as such periodic detention is no longer a component of the scope of this publication.

(c) Concept of an episode of imprisonment

Statistical information describing legal status, type of sentence, court type, sentence terms, most serious offence *etc.* all relate to the episode of imprisonment current at the time of the Census. For the purposes of this publication, an episode of imprisonment is taken as a continuous period of imprisonment under the management of CSNSW.

In distinguishing between the current and any previous episode of imprisonment the following rules were applied:

- i. for inmates held in custody for breach of a parole or licence order relating to a previous period(s) of imprisonment, the previous period(s) of imprisonment is/are excluded from the current episode;
- ii. any period of imprisonment prior to a release from a court where the inmate was subsequently freed without having been returned to full-time custody within 1 day, was excluded from the current episode;

- iii. any period of imprisonment prior to a transfer into Police custody where the inmate was subsequently freed without having been returned to full-time custody within 5 days, was excluded from the current episode;
- iv. any period of imprisonment prior to release on bail, on a bond or to immigration authorities was excluded from the current episode;
- v. any period of imprisonment prior to transfer to an institution other than a NSW correctional centre (including Kariong Juvenile Correctional Centre), a transitional centre or Police/Court complex operated by CSNSW was excluded from the current episode. For example, this excludes detention in a psychiatric hospital, juvenile or interstate correctional institution;
- vi. for inmates who had escaped from CSNSW custody and had been subsequently returned to custody, the episode of imprisonment current at the time of the escape was included in the current episode;
- vii. for inmates who have had their periodic detention order cancelled and were now serving the sentence by way of full-time imprisonment, or have been placed into full-time custody in relation to other offences, the period of periodic detention imprisonment was excluded from the current episode.

(d) Aboriginality

An inmate is recorded as an Aboriginal or Torres Strait Islander (TSI) where they have identified as such (by self report) in any current or previous episode of imprisonment. Prior to 2002 the Aboriginal/TSI status of the inmate current at the time of the Census was recorded.

(e) Known prior imprisonment as an adult

For the purposes of this publication known prior imprisonment includes any episode of imprisonment within periodic detention or full-time custody in NSW. Prior imprisonment includes imprisonment under a court issued order within a Police/Court cell complexes managed by the CSNSW but excludes any period of detention managed by CSNSW as a Police-bail refused detainee.

Prior to 1999, prior adult imprisonment was based simply on whether an inmate had any known episode of prior imprisonment as an adult in a gazetted correctional centre in NSW. A hierarchy of sub-categories of known prior imprisonment based on custodial program and legal status was introduced in 1999. In 2009 the hierarchy was revised to identify inmates having prior community based order(s) under CSNSW supervision within the population of inmates with no prior custodial imprisonment. Where there is

more than one period of prior imprisonment of a particular sub-category, the highest sub-category is used. The sub-categories, from lowest to highest, are:

- i. no prior imprisonment or community-based order;
- ii. prior community based order but no prior imprisonment;
- iii. an episode of periodic detention;
- iv. an episode on remand in full-time custody;
- v. an episode in full-time custody for fine default;
- vi. an episode in full-time custody under sentence.

(f) English speaking status of country of birth

Country of birth classification is based on the Standard Australian Classification of Countries (SACC) Second Edition (Australian Bureau of Statistics Catalogue No: 1269.0, ABS 2008). English speaking status of the country of birth is based on the 'Main English speaking countries' as identified in ABS publication *Australian Standard Classification of Countries for Social Statistics (ASCCSS) (ABS Catalogue No. 1269.0)*. The main English speaking countries comprise: Australia, Canada, New Zealand, Republic of Ireland, South Africa, United Kingdom (Channel Islands, England, Scotland, Wales and Northern Ireland) and the United States of America.

(g) Legal status

For the purpose of this publication, inmates have been classified to one of the following seven legal status categories:

- i. under sentence - no appeal;
- ii. awaiting result of appeal against conviction or sentence;
- iii. detained as a forensic/correctional patient;
- iv. unconvicted (awaiting court hearing/trial);
- v. awaiting deportation;
- vi. awaiting extradition to another jurisdiction;
- vii. civil inmate (held in custody for an offence other than a criminal offence).

The previously reported category 'convicted but awaiting sentence' was removed from this publication in 2007 as this legal status is not able to be determined from available electronic records. Inmates with this status are now included as 'unconvicted' inmates. Inmates held as Police custody 'Police-bail refused' detainees are recorded as 'unconvicted' inmates.

(h) Type of sentence

This item relates to the aggregate sentence imposed (see explanatory note (m)).

The category 'Life sentence' is comprised of (a) persons sentenced to an 'existing life sentence' (as defined in Schedule 1 of the *Crimes (Sentencing Procedure) Act 1999*) who have either yet to have that sentence redetermined by the Supreme Court or have been prohibited from making further application; (b) persons sentenced to an 'existing life sentence' who have had that sentence redetermined by the Supreme Court and the court has declined to set a specific term for the sentence but has set a non-parole period of a term of years; (c) persons sentenced to 'natural life' following proclamation of the *Life Sentences Amendment Act, 1989* and (d) persons sentenced to 'Life' with/without a non-parole period under federal/interstate legislation.

The category 'Forensic patient' is comprised of persons identified as 'forensic patients' as defined under Section 42 of the *Mental Health (Forensic Provisions) Act 1990* which includes persons found not guilty by reason of mental illness and persons found unfit to be tried. The category also includes persons convicted or held on remand for a criminal offence who are transferred from a correctional centre to a mental health facility managed by CSNSW as a 'correctional patient' under Section 55 of the *Act*. Prior to 2011 these persons were reported in Tables 1.3 and 2.3 as 'forensic patients – Type B'.

For other sentence types detailed in this publication sentences are described as either 'Sentence/Non-Parole' where a court imposed a non-parole period (i.e that component of the sentence that must be served in custody) or as 'Sentence/Parole period declined' where the court did not impose a non-parole period.

A new fine enforcement system for NSW was introduced from 27 January 1998 under the *Fines Act 1996* and is based on a hierarchy of civil and non-custodial sanctions with imprisonment as a sanction of last resort. Since that time inmates whose sentence type is recorded as 'Fine default' were held only for reason of default on a commonwealth or interstate fine (i.e. there are no outstanding charges or current sentences). The last fine defaulter was received into CSNSW custody in August 2004.

(i) Level and State of court

This item represents the level and state of court at which (for sentenced inmates) the current sentence for the most serious offence was imposed. For unsentenced inmates, the court at which the order for detention for the most serious offence (see explanatory note (k) below) current at the time of the Census is used. Appeal courts were recorded only where such courts have altered the sentence term imposed for the most serious offence. Where the most serious offence was breach of parole, the court of conviction is shown as State Parole Authority (formerly the NSW Parole Board). Inmates only detained awaiting deportation are shown under 'Immigration Authority'.

The NSW Drug Court program commenced on 8 February 1999 as a non-custodial program for illicit drug dependent offenders charged with non-violent offences. Inmates shown with a court of 'Drug Court' are convicted offenders either (a) held in custody as unsentenced inmates by the Drug Court pending determination of or placement on their program, (b) in custody serving a 'sanction' for a breach of the Drug Court order or (c) had their program terminated and were subsequently ordered by the Drug Court to serve the original suspended sentence by imprisonment in full-time custody.

(j) Classification of offences

In this publication the classification of offences has been based on the Australian and New Zealand Standard Offence Classification (ANZSOC), 2011 (ABS Catalogue No. 1234.0). A summary of the classification is given in Appendix 1.

The ASOC 2011 classification was introduced into this publication for the first time in 2019. Between 2009 and 2018 the classification of offences was based on ASOC 2008. In 2007 and 2008 the classification of offences was based on ASOC 1997 (1st edition). Prior to 2007, offences were classified according to the Second Revision of the New South Wales Classification of Offences and of Care and Protection Orders for Children (ANCO). An ASOC to ANCO concordance is provided as part of the ABS publication .

Under ANZSOC 2011 offences involving attempts, threats, intentions, and conspiracies are generally classified in the same subdivision as the actual offence, whereas under ASOC 1997, conspiracy offences (with the exception of conspiracy to murder) were classified to 'Division 13 - Public Order Offences'. In this publication both the ASOC division and subdivisions to which the most serious offence was classified have been reported.

Trends series (Section 4) have also been revised to concord with ANZSOC 2011. ASOC 1997 data for years 1989 to 2009 have been revised using the ANZSOC to ANCO concordance. Prior to 1989 offence data was not recorded at a level of detail which enabled a re-mapping to ANZSOC 2011. This data remains mapped to ASOC 1997, however, at the division level, differences between ANZSOC editions for these time periods are not expected to be significant.

Improved coding procedures for sentenced and unsentenced inmates whose most serious offence/charge fell within ANZSOC/ASOC Division 16 - Miscellaneous Offences were introduced in 2012. Specifically these related to import / export regulations. Where possible, previous years' results presented in trend series have been revised, however, caution should be

exercised when comparing 2012 and later miscellaneous offence data with previous years.

(k) Most serious offence

Although an inmate may be held by CSNSW for a number of different offences, only the characteristics of the most serious of all offences in the current imprisonment episode is used in this publication. Generally, the most serious offence is selected as the offence for which the longest sentence was imposed for a single count, regardless of the possible result of any appeals. For the purpose of this calculation, offences where no sentence had been imposed at the time of the sentence (i.e. remand orders) are treated as having a sentence length of zero.

Where the longest sentence was imposed on more than one offence, the most serious offence was identified using the National Offence Index (NOI) associated with each ANZSOC (2011) group. In 2008, following the adoption of ASOC (1997), the same methodology was used but was based on the NOI (1997). Prior to 2008 the offence with the lowest NSW ANCO code was selected as the most serious offence where the longest sentence was imposed on more than one offence. A table detailing historical trends in most serious offence based on ANZSOC division is provided in Section 4 (see Table 4.8).

(l) Federal offences

The identification of inmates with federal offence(s) is based on the federal status of all offences relating to the current imprisonment episode regardless of whether, at the time of the Census, a sentence had been imposed or had expired for that offence. Federal offences are identified by CSNSW staff using information recorded on court documents provided to the agency.

(m) Aggregate sentence

This item represents the longest period that a person may be detained under sentence in the current episode and includes any 'balance of sentence' terms. Pending charges that are likely to extend the aggregate sentence are ignored. In the case of an inmate serving the balance of a sentence after revocation of parole or licence, only the balance of the sentence is included, as distinct from publications previous to 1998 where the whole of the original sentence was included.

For the purpose of this publication, the aggregate sentence category 'Forensic patient' includes all persons with a legal status or sentence type of 'Forensic patient' regardless of any other sentence imposed during the current episode. The aggregate sentence length for 'Life' and certain 'Forensic patient' sentence types is indeterminate as the sentencing authority

does not impose a sentence expiry date for these sentences (refer to explanatory note (h) above).

(n) Inmate security classification

Inmates in correctional centres are classified in accordance with the *Crimes (Administration of Sentences) Regulation 2014* (Clauses 12, 13, 14 and 14A). Inmates held at the Compulsory Drug Treatment Centre are not classified according to the regulations and are shown separately. Security classification sub-categories for unsentenced inmates were introduced into this publication in 1999. In this publication the security classification current at the time of the Census is shown. It should be noted that some convicted inmates may have an 'unconvicted' inmate security classification if they were facing further and more serious charges or they had not been re-classified at the time of the Census.

A new security classification category of "Life" was created under Clause 14A of the *Crimes (Administration of Sentences) Amendment (Classification of Inmates) Regulation 2018*. This legislation came into force from 6 April 2018.

On summary sheets, Maximum security includes both convicted and unconvicted inmates classified as Life, AA, A1, A2, E1 and Category 5 (females). Medium security includes both convicted and unconvicted inmates classified as B, E2 and Category 4 (Females). Minimum security includes both convicted and unconvicted inmates classified as C1, C2, C3, Category 1, 2 and 3 (females) and inmates held at the Compulsory Drug Treatment Centre.

(o) Statistical area of last known address

The statistical area of last known address reported in this publication is based on the self reported postcode of last known address at the time of the Census. Postcodes were mapped to the statistical areas within the *Australian Statistical Geographical Standard (ASGS) (Australian Bureau of Statistics Catalogue No: 1270.0, ABS 2011)*. Publications prior to 2011 were mapped (as Statistical Sub-divisions) to the *Australian Standard Geographical Classification (ASGC) (Catalogue No: 1216.0, ABS 2009)*.

(p) Significant events

Reforms for the re-sentencing of offenders who were subject to a periodic detention order came into effect on 24 September 2018 under the *Crimes (Sentencing Procedure) Amendment (Sentencing Options) Act 2017 No 53*. From that date all periodic detention orders ceased to apply and a process of re-sentencing those offenders was introduced. The section of this report detailing periodic detainees has been removed.

The following is a summary of legislative and operational changes enacted between 30 June 2020 and 30 June 2021 which may have had a significant impact on the size and characteristics of the NSW inmate population:

- Clarence Correctional Centre started operation in July 2020.

Symbols

- * represents percentage values of less than 0.05%

Section 1

FULL-TIME CUSTODY INMATES

- inmates held in gazetted
correctional centres, transitional
centres and police/court complexes
in NSW

FULL-TIME CUSTODY INMATES Statistical Summary

1	Total persons					13126	
2	Gender						
		Male				12256	(93.4%)
		Female				870	(6.6%)
0	Aboriginality						
		Aboriginal/TSI				3599	(27.4%)
		Non-Aboriginal/TSI				9515	(72.5%)
		Unknown				12	(0.1%)
2	Age						
	Age group	Male	%	Female	%	Total	%
	18 to 24	1433	11.7%	104	12.0%	1537	(11.7%)
	25 to 34	4195	34.2%	326	37.5%	4521	(34.4%)
	35 to 44	3469	28.3%	272	31.3%	3741	(28.5%)
	45 and over	3159	25.8%	168	19.3%	3327	(25.3%)
S	Country of birth						
		Australian born				9977	(76.0%)
		Overseas born				2319	(17.7%)
		Unknown				830	(6.3%)
U	English speaking status of country of birth						
		Australian born				9977	(76.0%)
		Other English speaking				505	(3.8%)
		Non-English speaking				1814	(13.8%)
		Unknown				830	(6.3%)
S	Prior adult imprisonment (including remand)						
		Yes				8998	(68.6%)
		No				4128	(31.4%)
N	Maximum period of imprisonment						
		Unsentenced				4564	(34.8%)
		Less than 2 years				2814	(21.4%)
		2 to less than 5 years				2039	(15.5%)
		5 to less than 20 years				2948	(22.5%)
		20 years +				578	(4.4%)
		Life/Forensic patient				183	(1.4%)
E	Inmate security classification						
	Security level	Convicted	%	Unconvicted	%	Total	%
	Maximum	1522	18.1%	1952	41.3%	3474	26.5%
	Medium	1804	21.5%	1770	37.4%	3574	27.2%
	Minimum	4886	58.2%	570	12.1%	5456	41.6%
	Unclassified	186	2.2%	436	9.2%	622	4.7%
	Total	8398	100%	4728	100%	13126	100%

Table 1.1 Demographic characteristics

	GENDER				TOTAL	
	Male		Female			
Age at Census date (years)						
18	51	0.4%	3	0.3%	54	0.4%
19	104	0.8%	7	0.8%	111	0.8%
20	200	1.6%	10	1.1%	210	1.6%
21-22	477	3.9%	38	4.4%	515	3.9%
23-24	601	4.9%	46	5.3%	647	4.9%
25-29	2057	16.8%	162	18.6%	2219	16.9%
30-34	2138	17.4%	164	18.9%	2302	17.5%
35-39	1950	15.9%	163	18.7%	2113	16.1%
40-44	1519	12.4%	109	12.5%	1628	12.4%
45-49	1092	8.9%	83	9.5%	1175	9.0%
50-54	689	5.6%	34	3.9%	723	5.5%
55-59	599	4.9%	29	3.3%	628	4.8%
60-64	313	2.6%	13	1.5%	326	2.5%
65 +	466	3.8%	9	1.0%	475	3.6%
Aboriginality						
Aboriginal/Torres Strait Islander	3290	26.8%	309	35.5%	3599	27.4%
Non-Aboriginal	8955	73.1%	560	64.4%	9515	72.5%
Unknown	11	0.1%	1	0.1%	12	0.1%
Known prior imprisonment as an adult						
Known prior imprisonment	8440	68.9%	558	64.1%	8998	68.6%
- full-time custody (convicted)	6745	55.0%	402	46.2%	7147	54.4%
- full-time custody (fine only)	2	*	--	--	2	*
- full-time custody (remand)	1671	13.6%	153	17.6%	1824	13.9%
- periodic detention	22	0.2%	3	0.3%	25	0.2%
No prior imprisonment	3816	31.1%	312	35.9%	4128	31.4%
- prior community based order	1070	8.7%	102	11.7%	1172	8.9%
- no prior imprisonment or community order	2746	22.4%	210	24.1%	2956	22.5%
Marital status at reception						
Never married	7733	63.1%	508	58.4%	8241	62.8%
Married/de-facto	3684	30.1%	262	30.1%	3946	30.1%
Separated	286	2.3%	24	2.8%	310	2.4%
Divorced	395	3.2%	49	5.6%	444	3.4%
Widowed	26	0.2%	9	1.0%	35	0.3%
Unknown	132	1.1%	18	2.1%	150	1.1%
English speaking status of country of birth						
Australian born	9303	75.9%	674	77.5%	9977	76.0%
Other English speaking	478	3.9%	27	3.1%	505	3.8%
Non-English speaking	1713	14.0%	101	11.6%	1814	13.8%
Country of birth unknown	762	6.2%	68	7.8%	830	6.3%
TOTAL	12256	100.0%	870	100.0%	13126	100.0%

* Less than 0.05%

Table 1.2 Legal status characteristics

	GENDER				TOTAL	
	Male		Female			
Legal status						
Under sentence - no appeal	7549	61.6%	425	48.9%	7974	60.7%
Appellant	445	3.6%	43	4.9%	488	3.7%
Forensic patient	95	0.8%	5	0.6%	100	0.8%
Remand/trial ¹	4166	34.0%	397	45.6%	4563	34.8%
Awaiting deportation	1	*	--	--	1	*
Awaiting extradition	--	--	--	--	--	--
Civil inmate	--	--	--	--	--	--
Type of sentence						
Not under sentence	4167	34.0%	397	45.6%	4564	34.8%
Life	80	0.7%	3	0.3%	83	0.6%
Forensic patient	95	0.8%	5	0.6%	100	0.8%
Sentence/Non Parole	6735	55.0%	374	43.0%	7109	54.2%
Sentence/Parole declined	1179	9.6%	91	10.5%	1270	9.7%
Level of Court of most serious offence						
Supreme	1183	9.7%	79	9.1%	1262	9.6%
District	5535	45.2%	290	33.3%	5825	44.4%
Local	4459	36.4%	417	47.9%	4876	37.1%
State Parole Authority	974	7.9%	73	8.4%	1047	8.0%
Drug Court	92	0.8%	9	1.0%	101	0.8%
Children's Court	8	0.1%	--	--	8	0.1%
Federal/Other	4	*	2	0.2%	6	*
Immigration Authority	1	*	--	--	1	*
State of Court of most serious offence						
New South Wales	12207	99.6%	867	99.7%	13074	99.6%
Victoria	10	0.1%	--	--	10	0.1%
Queensland	8	0.1%	1	0.1%	9	0.1%
South Australia	--	--	--	--	--	--
Western Australia	14	0.1%	--	--	14	0.1%
Tasmania	--	--	--	--	--	--
Northern Territory	2	*	--	--	2	*
Australian Capital Territory	11	0.1%	--	--	11	0.1%
Overseas	4	*	2	0.2%	6	*
TOTAL	12256	100.0%	870	100.0%	13126	100.0%

* Less than 0.05%

1. Remand/trial includes awaiting sentence - see explanatory note (g).

Table 1.3 Characteristics of offences and sentences

	GENDER				TOTAL	
	Male		Female			
Most serious offence (MSO) ¹						
Homicide and related offences	911	7.4%	83	9.5%	994	7.6%
Murder	647	5.3%	55	6.3%	702	5.3%
Attempted murder	102	0.8%	7	0.8%	109	0.8%
Manslaughter and driving causing death	162	1.3%	21	2.4%	183	1.4%
Acts intended to cause injury	3248	26.5%	221	25.4%	3469	26.4%
Assault	2790	22.8%	197	22.6%	2987	22.8%
Other acts intended to cause injury	458	3.7%	24	2.8%	482	3.7%
Sexual assault and related offences	2169	17.7%	41	4.7%	2210	16.8%
Sexual assault	1927	15.7%	36	4.1%	1963	15.0%
Non-assaultive sexual offences	242	2.0%	5	0.6%	247	1.9%
Dangerous or negligent acts endang. persons	322	2.6%	25	2.9%	347	2.6%
Dangerous or negligent operation of vehicle	317	2.6%	24	2.8%	341	2.6%
Other dangerous or negligent acts	5	*	1	0.1%	6	*
Abduction, harassment and other offences	198	1.6%	21	2.4%	219	1.7%
Abduction and kidnapping	155	1.3%	18	2.1%	173	1.3%
Deprivation of liberty / false imprisonment	3	*	2	0.2%	5	*
Harassment and threatening behaviour	40	0.3%	1	0.1%	41	0.3%
Robbery, extortion and related offences	635	5.2%	39	4.5%	674	5.1%
Robbery	631	5.1%	38	4.4%	669	5.1%
Blackmail and extortion	4	*	1	0.1%	5	*
Unlawful entry with intent/burglary, B&E	627	5.1%	59	6.8%	686	5.2%
Theft and related offences	255	2.1%	49	5.6%	304	2.3%
Motor vehicle theft and related offences	64	0.5%	11	1.3%	75	0.6%
Theft (except motor vehicles)	122	1.0%	27	3.1%	149	1.1%
Receive or handle proceeds of crime	69	0.6%	11	1.3%	80	0.6%
Fraud, deception and related offences	224	1.8%	69	7.9%	293	2.2%
Obtain benefit by deception	201	1.6%	66	7.6%	267	2.0%
Forgery and counterfeiting	4	*	2	0.2%	6	*
Deceptive business/government practices	3	*	--	--	3	*
Other fraud and deception offences	16	0.1%	1	0.1%	17	0.1%
Illicit drug offences	1863	15.2%	146	16.8%	2009	15.3%
Import or export illicit drugs	420	3.4%	16	1.8%	436	3.3%
Deal or traffic in illicit drugs	1196	9.8%	116	13.3%	1312	10.0%
Manufacture or cultivate illicit drugs	232	1.9%	11	1.3%	243	1.9%
Possess and/or use illicit drugs	15	0.1%	3	0.3%	18	0.1%
Other illicit drug offences	--	--	--	--	--	--
Prohibited and regulated weapons etc.	268	2.2%	13	1.5%	281	2.1%
Prohibited weapons/explosives	141	1.2%	8	0.9%	149	1.1%
Regulated weapons/explosives	127	1.0%	5	0.6%	132	1.0%
Property damage and environmental pollution	89	0.7%	3	0.3%	92	0.7%
Public order offences	46	0.4%	4	0.5%	50	0.4%
Disorderly conduct	33	0.3%	2	0.2%	35	0.3%
Regulated public order offences	--	--	1	0.1%	1	*
Offensive conduct	13	0.1%	1	0.1%	14	0.1%
Traffic and vehicle regulatory offences	146	1.2%	11	1.3%	157	1.2%
Driving licence offences	112	0.9%	9	1.0%	121	0.9%
Road vehicle registration and roadworthiness	--	--	--	--	--	--
Regulatory driving offences	34	0.3%	2	0.2%	36	0.3%
Pedestrian offences	--	--	--	--	--	--
Offences against justice procedures etc.	1212	9.9%	85	9.8%	1297	9.9%
Breach of custodial order offences	8	0.1%	--	--	8	0.1%
Breach of community-based orders	1031	8.4%	73	8.4%	1104	8.4%
Breach of violence and non-violence orders	83	0.7%	4	0.5%	87	0.7%
Offences against government operations	8	0.1%	1	0.1%	9	0.1%
Offences against government security	43	0.4%	1	0.1%	44	0.3%
Offences against justice procedures	39	0.3%	6	0.7%	45	0.3%
Miscellaneous offences	43	0.4%	1	0.1%	44	0.3%
TOTAL	12256	100.0%	870	100.0%	13126	100.0%

* Less than 0.05%

1. Offences classified under Australian and New Zealand Standard Offence Classification 2011 - see explanatory

Table 1.3 Characteristics of offences and sentences (continued)

	GENDER				TOTAL	
	Male		Female			
Length of aggregate sentence						
Not under sentence	4167	34.0%	397	45.6%	4564	34.8%
1 - 7 days	1	*	--	--	1	*
8 - < 1 month	5	*	--	--	5	*
1 month - < 3 months	92	0.8%	15	1.7%	107	0.8%
3 months - < 6 months	281	2.3%	23	2.6%	304	2.3%
6 months - < 9 months	357	2.9%	24	2.8%	381	2.9%
9 months - < 1 year	396	3.2%	27	3.1%	423	3.2%
1 - < 2 years	1482	12.1%	111	12.8%	1593	12.1%
2 - < 5 years	1911	15.6%	128	14.7%	2039	15.5%
5 - < 7 years	844	6.9%	36	4.1%	880	6.7%
7 - < 10 years	848	6.9%	40	4.6%	888	6.8%
10 - < 15 years	791	6.5%	15	1.7%	806	6.1%
15 - < 20 years	358	2.9%	16	1.8%	374	2.8%
20 years +	548	4.5%	30	3.4%	578	4.4%
Life	80	0.7%	3	0.3%	83	0.6%
Forensic patient	95	0.8%	5	0.6%	100	0.8%
Indeterminate sentences - Life sentence and Forensic patients						
Not Life or Forensic/correctional patient	12081	98.6%	862	99.1%	12943	98.6%
Life 'Natural Life'	55	0.4%	1	0.1%	56	0.4%
Life - yet to be redetermined	--	--	--	--	--	--
Life / Non Parole period	23	0.2%	2	0.2%	25	0.2%
Life - Breach of parole/licence	--	--	--	--	--	--
Life (ACT)	--	--	--	--	--	--
Life (Federal)	2	*	--	--	2	*
Life (Overseas)	--	--	--	--	--	--
Forensic patient - Indeterminate term	59	0.5%	3	0.3%	62	0.5%
Forensic patient - Limiting term	3	*	--	--	3	*
Correctional patient ¹ - under sentence	23	0.2%	2	0.2%	25	0.2%
Correctional patient ¹ - unsentenced	10	0.1%	--	--	10	0.1%
Is any offence a federal offence ?						
Yes	1082	8.8%	59	6.8%	1141	8.7%
No	11174	91.2%	811	93.2%	11985	91.3%
Is the most serious offence a federal offence ?						
Yes	897	7.3%	55	6.3%	952	7.3%
No	11359	92.7%	815	93.7%	12174	92.7%
TOTAL	12256	100.0%	870	100.0%	13126	100.0%

* less than 0.05%.

1. See explanatory note (h).

Table 1.3 Characteristics of offences and sentences (continued)

	GENDER				TOTAL	
	Male		Female			
Is the inmate serving a term for breach of parole, licence or escape ?						
Not breach of parole/licence or escapee	10234	83.5%	798	91.7%	11032	84.0%
Breach of parole	2010	16.4%	71	8.2%	2081	15.9%
Breach of licence	--	--	--	--	--	--
Escape	9	0.1%	1	0.1%	10	0.1%
Breach of parole and escape	3	*	--	--	3	*
Are there any other offences for inmates whose MSO is breach of parole/licence ?						
MSO not breach of parole/licence	12249	99.9%	869	99.9%	13118	99.9%
No other offence (excludes fines)	1	*	1	0.1%	2	*
Remand for other offence(s)	4	*	--	--	4	*
Convicted for other offence(s)	2	*	--	--	2	*
Is the inmate in full-time custody having breached an order (other than parole/licence)?						
In full-time - no breach	11546	94.2%	783	90.0%	12329	93.9%
Sentenced - breach of periodic detention	2	*	--	--	2	*
Sentenced - breach of home detention	1	*	--	--	1	*
Sentenced - breach of intensive correction order	707	5.8%	87	10.0%	794	6.0%
Remanded - breach of periodic detention	--	--	--	--	--	--
Remanded - breach of home detention	--	--	--	--	--	--
Remanded - breach of intensive correction order	--	--	--	--	--	--
Time to serve to earliest date of release (EDR)						
Unsentenced	4167	34.0%	397	45.6%	4564	34.8%
Earliest date of release lapsed	238	1.9%	5	0.6%	243	1.9%
< 3 months	1892	15.4%	142	16.3%	2034	15.5%
3 - < 6 months	1338	10.9%	93	10.7%	1431	10.9%
6 - < 12 months	1419	11.6%	83	9.5%	1502	11.4%
1 - < 2 years	1173	9.6%	63	7.2%	1236	9.4%
2 - < 5 years	1142	9.3%	45	5.2%	1187	9.0%
5 years +	712	5.8%	34	3.9%	746	5.7%
Indeterminate (Life/forensic patient) ¹	175	1.4%	8	0.9%	183	1.4%
TOTAL	12256	100.0%	870	100.0%	13126	100.0%

1. Includes all inmates with a type of sentence of Life or Forensic patient regardless of whether an earliest date of release exists for that inmate.

Table 1.4 Inmate security classification

	GENDER				TOTAL	
	Male		Female			
Security classification of inmate ¹						
Maximum security classification						
Maximum security - Convicted	1514	12.4%	8	0.9%	1522	11.6%
Life	54	0.4%	1	0.1%	55	0.4%
AA	28	0.2%	--	--	28	0.2%
A1	19	0.2%	--	--	19	0.1%
A2	1237	10.1%	--	--	1237	9.4%
E1	176	1.4%	7	0.8%	183	1.4%
Category 5 (Female)	--	--	--	--	--	--
Maximum security - Unconvicted	1947	15.9%	5	0.6%	1952	14.9%
Unconvicted AA	12	0.1%	--	--	12	0.1%
Unconvicted A1	--	--	--	--	--	--
Unconvicted A2	1851	15.1%	--	--	1851	14.1%
Unconvicted E1	84	0.7%	5	0.6%	89	0.7%
Unconvicted Category 5 (Female)	--	--	--	--	--	--
Sub-total Maximum security	3461	28.2%	13	1.5%	3474	26.5%
Medium security classification						
Medium security - Convicted	1747	14.3%	57	6.6%	1804	13.7%
B	1508	12.3%	--	--	1508	11.5%
E2	239	2.0%	9	1.0%	248	1.9%
Category 4 (Female)	--	--	48	5.5%	48	0.4%
Medium security - Unconvicted	1652	13.5%	118	13.6%	1770	13.5%
Unconvicted B	1528	12.5%	--	--	1528	11.6%
Unconvicted E2	124	1.0%	13	1.5%	137	1.0%
Unconvicted Category 4 (Female)	--	--	105	12.1%	105	0.8%
Sub-total Medium security	3399	27.7%	175	20.1%	3574	27.2%
Minimum security classification						
Minimum security - Convicted	4509	36.8%	377	43.3%	4886	37.2%
C1	1274	10.4%	--	--	1274	9.7%
C2	2883	23.5%	--	--	2883	22.0%
C3	309	2.5%	--	--	309	2.4%
Compulsory Drug Treatment Centre	43	0.4%	--	--	43	0.3%
Category 3 (Female)	--	--	96	11.0%	96	0.7%
Category 2 (Female)	--	--	251	28.9%	251	1.9%
Category 1 (Female)	--	--	30	3.4%	30	0.2%
Minimum security - Unconvicted	369	3.0%	201	23.1%	570	4.3%
Unconvicted C1	369	3.0%	--	--	369	2.8%
Unconvicted Category 3 (Female)	--	--	117	13.4%	117	0.9%
Unconvicted Category 2 (Female)	--	--	84	9.7%	84	0.6%
Sub-total Minimum	4878	39.8%	578	66.4%	5456	41.6%
Unclassified						
Unclassified - convicted	164	1.3%	22	2.5%	186	1.4%
Unclassified - unconvicted	354	2.9%	82	9.4%	436	3.3%
Sub-total Unclassified	518	4.2%	104	12.0%	622	4.7%
TOTAL	12256	100.0%	870	100.0%	13126	100.0%

1. Some convicted inmates may have an "unconvicted" inmate classification if they were facing further and more serious charges or had not been re-classified at the time of the census. Therefore the total number of inmates with "convicted" inmate classifications may not be equal to the total number of convicted inmates.

* less than 0.05%.

Table 1.5 Location and correctional centre security classification

	GENDER				TOTAL	
	Male		Female			
Correctional centre by security rating						
Maximum security						
Bathurst (Maximum)	187	1.5%	--	--	187	1.4%
Clarence (Maximum)	755	6.2%	147	16.9%	902	6.9%
Dillwynia (Maximum)	--	--	195	22.4%	195	1.5%
Goulburn (Maximum)	291	2.4%	--	--	291	2.2%
High Risk Management	73	0.6%	--	--	73	0.6%
Hunter	348	2.8%	--	--	348	2.7%
Junee (Maximum)	140	1.1%	5	0.6%	145	1.1%
Lithgow	281	2.3%	--	--	281	2.1%
Long Bay Hospital	232	1.9%	4	0.5%	236	1.8%
Macquarie	381	3.1%	--	--	381	2.9%
Metropolitan Remand and Reception	1053	8.6%	--	--	1053	8.0%
Metro. Special Programs (Maximum)	435	3.5%	--	--	435	3.3%
Mid-North Coast (Maximum)	624	5.1%	--	--	624	4.8%
Parklea (Maximum)	1138	9.3%	--	--	1138	8.7%
Shortland	507	4.1%	--	--	507	3.9%
Silverwater Women's	--	--	184	21.1%	184	1.4%
South Coast (Maximum)	442	3.6%	--	--	442	3.4%
Special Purpose Centre (Maximum)	46	0.4%	1	0.1%	47	0.4%
Wellington (Maximum)	53	0.4%	1	0.1%	54	0.4%
Sub-total Maximum security	6986	57.0%	537	61.7%	7523	57.3%
Medium security						
Bathurst (Medium)	390	3.2%	6	0.7%	396	3.0%
Broken Hill (Medium)	34	0.3%	--	--	34	0.3%
Cooma	157	1.3%	--	--	157	1.2%
Dillwynia (Medium)	--	--	183	21.0%	183	1.4%
John Morony (Medium)	407	3.3%	--	--	407	3.1%
Junee (Medium)	589	4.8%	--	--	589	4.5%
Mid-North Coast (Medium)	--	--	38	4.4%	38	0.3%
South Coast (Medium)	192	1.6%	--	--	192	1.5%
Tamworth (Medium)	28	0.2%	--	--	28	0.2%
Sub-total Medium security	1797	14.7%	227	26.1%	2024	15.4%
Minimum security						
Bathurst (Minimum)	178	1.5%	--	--	178	1.4%
Broken Hill (Minimum)	13	0.1%	8	0.9%	21	0.2%
Cessnock (Minimum)	639	5.2%	--	--	639	4.9%
Compulsory Drug Treatment	41	0.3%	--	--	41	0.3%
Clarence (Minimum)	201	1.6%	--	--	201	1.5%
Cooma	38	0.3%	--	--	38	0.3%
Dawn de Loas	137	1.1%	--	--	137	1.0%
Dillwynia (Minimum)	--	--	22	2.5%	22	0.2%
Emu Plains	--	--	32	3.7%	32	0.2%
Geoffrey Pearce	338	2.8%	--	--	338	2.6%
Glen Innes	116	0.9%	--	--	116	0.9%
Goulburn (Minimum)	88	0.7%	--	--	88	0.7%
Junee (Minimum)	138	1.1%	--	--	138	1.1%
Kirkconnell	188	1.5%	--	--	188	1.4%
Mannus	152	1.2%	--	--	152	1.2%
Metro. Special Programs (Minimum)	305	2.5%	--	--	305	2.3%
Mid-North Coast (Minimum)	108	0.9%	--	--	108	0.8%
Mary Wade	72	0.6%	--	--	72	0.5%
Oberon	92	0.8%	--	--	92	0.7%
Parklea (Minimum)	130	1.1%	--	--	130	1.0%
South Coast (Minimum)	185	1.5%	--	--	185	1.4%
St. Heliers	230	1.9%	--	--	230	1.8%
Tamworth (Minimum)	12	0.1%	--	--	12	0.1%
Wellington (Minimum)	10	0.1%	3	0.3%	13	0.1%
Sub-total Minimum security	3411	27.8%	65	7.5%	3476	26.5%
Sub-total Correctional Centres	12194	99.5%	829	95.3%	13023	99.2%

Table 1.5 Location and correctional centre security classification (continued)

	GENDER				TOTAL	
	Male		Female			
Transitional Centres						
Bolwara House Transitional Centres	--	--	15	1.7%	15	0.1%
Parramatta Transitional Centre	--	--	9	1.0%	9	0.1%
Sub-total Transitional Centres	--	--	24	2.8%	24	0.2%
Court/Police Cell Complexes						
Albury	1	*	--	--	1	*
Amber Laurel	11	0.1%	5	0.6%	16	0.1%
Batemans Bay	--	--	--	--	--	--
Dubbo	6	*	--	--	6	*
Kariong	21	0.2%	4	0.5%	25	0.2%
Lismore	3	*	--	--	3	*
Moree	--	--	--	--	--	--
Newcastle	1	*	3	0.3%	4	*
Parramatta	--	--	--	--	--	--
Penrith	--	--	--	--	--	--
Port Macquarie	3	*	--	--	3	*
Queanbeyan	--	--	--	--	--	--
Surry Hills (Sydney)	10	0.1%	4	0.5%	14	0.1%
Wagga Wagga	3	*	1	0.1%	4	*
Wollongong	3	*	--	--	3	*
Sub-total Court/Police Cell Complexes	62	0.5%	17	2.0%	79	0.6%
TOTAL	12256	100.0%	870	100.0%	13126	100.0%

* less than 0.05%

Table 1.6 Country of birth

Country of birth	GENDER				TOTAL	
	Male		Female			
OCEANIA AND ANTARCTICA						
AUSTRALIA (incl. ext. territories)	9303	75.9%	674	77.5%	9977	76.0%
- New South Wales	6389	52.1%	414	47.6%	6803	51.8%
- Victoria	137	1.1%	5	0.6%	142	1.1%
- Queensland	232	1.9%	20	2.3%	252	1.9%
- South Australia	36	0.3%	3	0.3%	39	0.3%
- Western Australia	39	0.3%	3	0.3%	42	0.3%
- Tasmania	18	0.1%	1	0.1%	19	0.1%
- Northern Territory	8	0.1%	1	0.1%	9	0.1%
- Australian Capital Territory	59	0.5%	6	0.7%	65	0.5%
- Australian External Territories	--	--	--	--	--	--
- Australia (not further defined)	2384	19.5%	221	25.4%	2605	19.8%
- Norfolk Island	1	*	--	--	1	*
NEW ZEALAND	268	2.2%	23	2.6%	291	2.2%
MELANESIA	9	0.1%	--	--	9	0.1%
- New Caledonia	--	--	--	--	--	--
- Papua New Guinea	7	0.1%	--	--	7	0.1%
- Solomon Islands	1	*	--	--	1	*
- Vanuatu	1	*	--	--	1	*
MICRONESIA	--	--	--	--	--	--
POLYNESIA (excl. Hawaii)	162	1.3%	10	1.1%	172	1.3%
- Cook Islands	11	0.1%	1	0.1%	12	0.1%
- Fiji	71	0.6%	4	0.5%	75	0.6%
- French Polynesia	--	--	--	--	--	--
- Samoa	47	0.4%	3	0.3%	50	0.4%
- Samoa American	--	--	--	--	--	--
- Tokelau	1	*	--	--	1	*
- Tonga	32	0.3%	2	0.2%	34	0.3%
- Tuvalu	--	--	--	--	--	--
Sub-total						
OCEANIA AND ANTARCTICA	9742	79.5%	707	81.3%	10449	79.6%
NORTH-WEST EUROPE						
UNITED KINGDOM	129	1.1%	2	0.2%	131	1.0%
- England	106	0.9%	2	0.2%	108	0.8%
- Isle of Man	--	--	--	--	--	--
- Northern Ireland	5	*	--	--	5	*
- Scotland	15	0.1%	--	--	15	0.1%
- Wales	3	*	--	--	3	*
IRELAND	17	0.1%	--	--	17	0.1%
WESTERN EUROPE	43	0.4%	2	0.2%	45	0.3%
- Austria	9	0.1%	--	--	9	0.1%
- Belgium	4	*	--	--	4	*
- France	8	0.1%	1	0.1%	9	0.1%
- Germany	14	0.1%	--	--	14	0.1%
- Monaco	--	--	--	--	--	--
- Netherlands	7	0.1%	1	0.1%	8	0.1%
- Switzerland	1	*	--	--	1	*
NORTHERN EUROPE	2	*	--	--	2	*
- Denmark	--	--	--	--	--	--
- Finland	2	*	--	--	2	*
- Iceland	--	--	--	--	--	--
- Norway	--	--	--	--	--	--
- Sweden	--	--	--	--	--	--
Sub-total						
NORTH-WEST EUROPE	191	1.6%	4	0.5%	195	1.5%

* Less than 0.05%

Table 1.6 Country of birth (continued)

Country of birth (continued)	GENDER				TOTAL	
	Male		Female			
SOUTHERN AND EASTERN EUROPE						
SOUTHERN EUROPE	31	0.3%	--	--	31	0.2%
- Italy	15	0.1%	--	--	15	0.1%
- Malta	4	*	--	--	4	*
- Portugal	7	0.1%	--	--	7	0.1%
- Spain	5	*	--	--	5	*
SOUTH EASTERN EUROPE	80	0.7%	1	0.1%	81	0.6%
- Albania	5	*	--	--	5	*
- Bosnia-Herzegovina	11	0.1%	--	--	11	0.1%
- Bulgaria	--	--	--	--	--	--
- Croatia	6	*	--	--	6	*
- Cyprus	3	*	--	--	3	*
- Fmr Yugoslav Rep. of Macedonia	25	0.2%	--	--	25	0.2%
- Greece	13	0.1%	--	--	13	0.1%
- Romania	6	*	1	0.1%	7	0.1%
- Slovenia	--	--	--	--	--	--
- Montenegro	1	*	--	--	1	*
- Serbia	10	0.1%	--	--	10	0.1%
- Yugoslavia, Federal Republic of	--	--	--	--	--	--
EASTERN EUROPE	28	0.2%	2	0.2%	30	0.2%
- Belarus	--	--	--	--	--	--
- Czech Republic	3	*	1	0.1%	4	*
- Estonia	--	--	--	--	--	--
- Hungary	3	*	1	0.1%	4	*
- Latvia	--	--	--	--	--	--
- Lithuania	--	--	--	--	--	--
- Poland	11	0.1%	--	--	11	0.1%
- Russian Federation	7	0.1%	--	--	7	0.1%
- Ukraine	4	*	--	--	4	*
Sub-total						
SOUTHERN AND EASTERN EUROPE	139	1.1%	3	0.3%	142	1.1%
NORTH AFRICA AND THE MIDDLE EAST						
NORTH AFRICA	70	0.6%	7	0.8%	77	0.6%
- Algeria	2	*	--	--	2	*
- Egypt	21	0.2%	--	--	21	0.2%
- Libya	--	--	--	--	--	--
- Morocco	1	*	1	0.1%	2	*
- Sudan	46	0.4%	6	0.7%	52	0.4%
- Tunisia	--	--	--	--	--	--
- Western Sahara	--	--	--	--	--	--
MIDDLE EAST	371	3.0%	6	0.7%	377	2.9%
- Gaza Strip and West Bank	5	*	--	--	5	*
- Iran	84	0.7%	1	0.1%	85	0.6%
- Iraq	59	0.5%	2	0.2%	61	0.5%
- Israel	1	*	--	--	1	*
- Jordan	15	0.1%	--	--	15	0.1%
- Kuwait	8	0.1%	--	--	8	0.1%
- Lebanon	152	1.2%	3	0.3%	155	1.2%
- Qatar	1	*	--	--	1	*
- Saudi Arabia	3	*	--	--	3	*
- Syria	10	0.1%	--	--	10	0.1%
- Turkey	30	0.2%	--	--	30	0.2%
- United Arab Emirates	3	*	--	--	3	*
Sub-total						
NORTH AFRICA AND THE MIDDLE EAST	441	3.6%	13	1.5%	454	3.5%

* Less than 0.05%

Table 1.6 Country of birth (continued)

Country of birth (continued)	GENDER				TOTAL	
	Male		Female			
SOUTH-EAST ASIA						
MAINLAND SOUTH-EAST ASIA	264	2.2%	36	4.1%	300	2.3%
- Burma (Myanmar)	2	*	--	--	2	*
- Cambodia	8	0.1%	3	0.3%	11	0.1%
- Laos	9	0.1%	--	--	9	0.1%
- Thailand	30	0.2%	2	0.2%	32	0.2%
- Viet Nam	215	1.8%	31	3.6%	246	1.9%
MARITIME SOUTH-EAST ASIA	121	1.0%	12	1.4%	133	1.0%
- Brunei Darussalam	--	--	--	--	--	--
- Indonesia	12	0.1%	2	0.2%	14	0.1%
- Malaysia	54	0.4%	4	0.5%	58	0.4%
- Philippines	50	0.4%	6	0.7%	56	0.4%
- Singapore	5	*	--	--	5	*
- East Timor	--	--	--	--	--	--
Sub-total	385	3.1%	48	5.5%	433	3.3%
SOUTHEAST ASIA						
NORTH-EAST ASIA						
CHINESE ASIA (incl. Mongolia)	203	1.7%	14	1.6%	217	1.7%
- China (excl. SAR's and Taiwan)	148	1.2%	11	1.3%	159	1.2%
- Hong Kong (SAR of China)	37	0.3%	1	0.1%	38	0.3%
- Macau	--	--	--	--	--	--
- Mongolia	2	*	--	--	2	*
- Taiwan	16	0.1%	2	0.2%	18	0.1%
JAPAN AND THE KOREAS	31	0.3%	1	0.1%	32	0.2%
- Japan	1	*	1	0.1%	2	*
- Korea, Democratic People's Republic of (North)	--	--	--	--	--	--
- Korea, Republic of (South)	30	0.2%	--	--	30	0.2%
Sub-total	234	1.9%	15	1.7%	249	1.9%
SOUTHERN AND CENTRAL ASIA						
SOUTHERN ASIA	109	0.9%	2	0.2%	111	0.8%
- Bangladesh	15	0.1%	--	--	15	0.1%
- India	49	0.4%	1	0.1%	50	0.4%
- Nepal	7	0.1%	1	0.1%	8	0.1%
- Pakistan	22	0.2%	--	--	22	0.2%
- Sri Lanka	16	0.1%	--	--	16	0.1%
CENTRAL ASIA	31	0.3%	--	--	31	0.2%
- Afghanistan	29	0.2%	--	--	29	0.2%
- Armenia	2	*	--	--	2	*
- Kazakhstan	--	--	--	--	--	--
- Uzbekistan	2	*	--	--	2	*
Sub-total	140	1.1%	2	0.2%	142	1.1%
AMERICAS						
NORTHERN AMERICA	37	0.3%	--	--	37	0.3%
- Bermuda	--	--	--	--	--	--
- Canada	14	0.1%	--	--	14	0.1%
- United States of America	23	0.2%	--	--	23	0.2%

* Less than 0.05%

Table 1.6 Country of birth (continued)

Country of birth (continued)	GENDER				TOTAL	
	Male		Female			
AMERICAS (continued)						
SOUTH AMERICA	67	0.5%	4	0.5%	71	0.5%
- Argentina	3	*	--	--	3	*
- Bolivia	1	*	--	--	1	*
- Brazil	11	0.1%	2	0.2%	13	0.1%
- Chile	20	0.2%	2	0.2%	22	0.2%
- Colombia	18	0.1%	--	--	18	0.1%
- Ecuador	1	*	--	--	1	*
- Peru	11	0.1%	--	--	11	0.1%
- Uruguay	1	*	--	--	1	*
- Venezuela	1	*	--	--	1	*
CENTRAL AMERICA	9	0.1%	1	0.1%	10	0.1%
- El Salvador	1	*	--	--	1	*
- Mexico	5	*	1	0.1%	6	*
- Nicaragua	3	*	--	--	3	*
CARIBBEAN	4	*	1	0.1%	5	*
- Bahamas	1	*	--	--	1	*
- Barbados	--	--	--	--	--	--
- Cuba	1	*	--	--	1	*
- Dominican Republic	--	--	1	0.1%	1	*
- St Vincent and the Grenadines	1	*	--	--	1	*
- Trinidad and Tobago	1	*	--	--	1	*
Sub-total AMERICAS	117	1.0%	6	0.7%	123	0.9%
SUB-SAHARAN AFRICA						
CENTRAL & WEST AFRICA	38	0.3%	--	--	38	0.3%
- Benin	1	*	--	--	1	*
- Congo	1	*	--	--	1	*
- Gambia	1	*	--	--	1	*
- Ghana	3	*	--	--	3	*
- Guinea	--	--	--	--	--	--
- Liberia	4	*	--	--	4	*
- Niger	--	--	--	--	--	--
- Nigeria	23	0.2%	--	--	23	0.2%
- Senegal	--	--	--	--	--	--
- Sierra Leone	5	*	--	--	5	*
SOUTHERN & EAST AFRICA	64	0.5%	4	0.5%	68	0.5%
- Angola	--	--	--	--	--	--
- Ethiopia	4	*	--	--	4	*
- Kenya	9	0.1%	--	--	9	0.1%
- Malawi	1	*	--	--	1	*
- Mauritius	3	*	--	--	3	*
- Somalia	4	*	--	--	4	*
- South Africa	27	0.2%	2	0.2%	29	0.2%
- Tanzania	2	*	--	--	2	*
- Uganda	1	*	--	--	1	*
- Zambia	1	*	--	--	1	*
- Zimbabwe	6	*	1	0.1%	7	0.1%
- Southern & East Africa (nec)	6	*	1	0.1%	7	0.1%
Sub-total SUB-SAHARAN AFRICA	102	0.8%	4	0.5%	106	0.8%
UNKNOWN	761	6.2%	68	7.8%	829	6.3%
TOTAL	12256	100.0%	870	100.0%	13126	100.0%

* Less than 0.05%

nec - not elsewhere classified

Table 1.7 Statistical area of last known address

Statistical area (Level 4)	GENDER				TOTAL	
	Male		Female			
New South Wales						
Capital Region	296	2.4%	15	1.7%	311	2.4%
Central Coast	592	4.8%	47	5.4%	639	4.9%
Central West	393	3.2%	33	3.8%	426	3.2%
Coffs Harbour - Grafton	209	1.7%	12	1.4%	221	1.7%
Far West and Orana	403	3.3%	21	2.4%	424	3.2%
Hunter Valley exc Newcastle	549	4.5%	40	4.6%	589	4.5%
Illawarra	486	4.0%	38	4.4%	524	4.0%
Mid North Coast	409	3.3%	23	2.6%	432	3.3%
Murray	214	1.7%	15	1.7%	229	1.7%
New England and North West	420	3.4%	36	4.1%	456	3.5%
Newcastle and Lake Macquarie	737	6.0%	45	5.2%	782	6.0%
Richmond - Tweed	258	2.1%	20	2.3%	278	2.1%
Riverina	374	3.1%	31	3.6%	405	3.1%
Southern Highlands and Shoalhaven	220	1.8%	11	1.3%	231	1.8%
Sydney - Baulkham Hills and Hawkesbury	108	0.9%	6	0.7%	114	0.9%
Sydney - Blacktown	819	6.7%	57	6.6%	876	6.7%
Sydney - City and Inner South	642	5.2%	69	7.9%	711	5.4%
Sydney - Eastern Suburbs	287	2.3%	15	1.7%	302	2.3%
Sydney - Inner South West	934	7.6%	52	6.0%	986	7.5%
Sydney - Inner West	262	2.1%	13	1.5%	275	2.1%
Sydney - North Sydney and Hornsby	143	1.2%	9	1.0%	152	1.2%
Sydney - Northern Beaches	117	1.0%	9	1.0%	126	1.0%
Sydney - Outer South West	565	4.6%	40	4.6%	605	4.6%
Sydney - Outer West and Blue Mountains	499	4.1%	43	4.9%	542	4.1%
Sydney - Parramatta	846	6.9%	61	7.0%	907	6.9%
Sydney - Ryde	99	0.8%	8	0.9%	107	0.8%
Sydney - South West	888	7.2%	67	7.7%	955	7.3%
Sydney - Sutherland	135	1.1%	12	1.4%	147	1.1%
Sub-total New South Wales	11904	97.1%	848	97.5%	12752	97.2%
Victoria	58	0.5%	7	0.8%	65	0.5%
Queensland	111	0.9%	4	0.5%	115	0.9%
South Australia	16	0.1%	1	0.1%	17	0.1%
Western Australia	8	0.1%	--	--	8	0.1%
Tasmania	4	*	--	--	4	*
Northern Territory	3	*	--	--	3	*
Australian Capital Territory	16	0.1%	1	0.1%	17	0.1%
Sub-total other states/territories	216	1.8%	13	1.5%	229	1.7%
No fixed abode	19	0.2%	--	--	19	0.1%
Overseas	2	*	--	--	2	*
Unknown	115	0.9%	9	1.0%	124	0.9%
TOTAL	12256	100.0%	870	100.0%	13126	100.0%

Section 2

INDIGENOUS INMATES HELD IN FULL-TIME CUSTODY

- Indigenous inmates held in gazetted correctional centres, transitional centres and police/court complexes in NSW

INDIGENOUS INMATES Statistical Summary

1	Total persons					3599	
2	Gender						
		Male				3290	(91.4%)
		Female				309	(8.6%)
	Aboriginality						
		Aboriginal/TSI				3599	(100.0%)
0	Age						
	Age group	Male	%	Female	%	Total	%
	18 to 24	595	18.1%	52	16.8%	647	(18.0%)
	25 to 34	1350	41.0%	123	39.8%	1473	(40.9%)
	35 to 44	855	26.0%	99	32.0%	954	(26.5%)
	45 and over	490	14.9%	35	11.3%	525	(14.6%)
	Country of birth						
		Australian born				3412	(94.8%)
		Overseas born				35	(1.0%)
		Unknown				152	(4.2%)
S	English speaking status of country of birth						
		Australian born				3412	(94.8%)
		Other English speaking				18	(0.5%)
		Non-English speaking				17	(0.5%)
		Unknown				152	(4.2%)
U	Prior adult imprisonment (including remand)						
		Yes				3071	(85.3%)
		No				528	(14.7%)
S	Maximum period of imprisonment						
		Unsentenced				1300	(36.1%)
		Less than 2 years				1059	(29.4%)
		2 to less than 5 years				590	(16.4%)
		5 to less than 20 years				522	(14.5%)
		20 years +				94	(2.6%)
		Life/Forensic patient				34	(0.9%)
W	Inmate security classification						
	Security level	Convicted	%	Unconvicted	%	Total	%
	Maximum	518	23.2%	429	31.4%	947	26.3%
	Medium	629	28.2%	630	46.2%	1259	35.0%
	Minimum	1037	46.4%	171	12.5%	1208	33.6%
	Unclassified	50	2.2%	135	9.9%	185	5.1%
	Total	2234	100%	1365	100%	3599	100%

Table 2.1 Demographic characteristics

	GENDER				TOTAL	
	Male		Female			
Age at Census date (years)						
18	21	0.6%	1	0.3%	22	0.6%
19	46	1.4%	4	1.3%	50	1.4%
20	90	2.7%	4	1.3%	94	2.6%
21-22	191	5.8%	20	6.5%	211	5.9%
23-24	247	7.5%	23	7.4%	270	7.5%
25-29	721	21.9%	67	21.7%	788	21.9%
30-34	629	19.1%	56	18.1%	685	19.0%
35-39	536	16.3%	64	20.7%	600	16.7%
40-44	319	9.7%	35	11.3%	354	9.8%
45-49	238	7.2%	16	5.2%	254	7.1%
50-54	125	3.8%	9	2.9%	134	3.7%
55-59	74	2.2%	8	2.6%	82	2.3%
60-64	33	1.0%	1	0.3%	34	0.9%
65 +	20	0.6%	1	0.3%	21	0.6%
Aboriginality						
Aboriginal/Torres Strait Islander	3290	100.0%	309	100.0%	3599	100.0%
Non-Aboriginal	--	--	--	--	--	--
Unknown	--	--	--	--	--	--
Known prior imprisonment as an adult						
Known prior imprisonment	2823	85.8%	248	80.3%	3071	85.3%
- full-time custody (convicted)	2487	75.6%	196	63.4%	2683	74.5%
- full-time custody (fine only)	1	*	--	--	1	*
- full-time custody (remand)	333	10.1%	51	16.5%	384	10.7%
- periodic detention	2	0.1%	1	0.3%	3	0.1%
No prior imprisonment	467	14.2%	61	19.7%	528	14.7%
- prior community based order	213	6.5%	28	9.1%	241	6.7%
- no prior imprisonment or community order	254	7.7%	33	10.7%	287	8.0%
Marital status at reception						
Never married	2246	68.3%	199	64.4%	2445	67.9%
Married/de-facto	940	28.6%	90	29.1%	1030	28.6%
Separated	47	1.4%	6	1.9%	53	1.5%
Divorced	37	1.1%	8	2.6%	45	1.3%
Widowed	-	-	3	1.0%	3	0.1%
Unknown	20	0.6%	3	1.0%	23	0.6%
English speaking status of country of birth						
Australian born	3125	95.0%	287	92.9%	3412	94.8%
Other English speaking	17	0.5%	1	0.3%	18	0.5%
Non-English speaking	17	0.5%	-	-	17	0.5%
Country of birth unknown	131	4.0%	21	6.8%	152	4.2%
TOTAL	3290	100.0%	309	100.0%	3599	100.0%

* Less than 0.05%

Table 2.2 Legal status characteristics

	GENDER				TOTAL	
	Male		Female			
Legal status						
Under sentence - no appeal	2009	61.1%	146	47.2%	2155	59.9%
Appellant	109	3.3%	11	3.6%	120	3.3%
Forensic patient	21	0.6%	3	1.0%	24	0.7%
Remand/trial ¹	1151	35.0%	149	48.2%	1300	36.1%
Awaiting deportation	--	--	--	--	--	--
Awaiting extradition	--	--	--	--	--	--
Civil inmate	--	--	--	--	--	--
Type of sentence						
Not under sentence	1151	35.0%	149	48.2%	1300	36.1%
Life	9	0.3%	1	0.3%	10	0.3%
Forensic patient	21	0.6%	3	1.0%	24	0.7%
Sentence/Non Parole	1641	49.9%	111	35.9%	1752	48.7%
Sentence/Parole declined	468	14.2%	45	14.6%	513	14.3%
Level of Court of most serious offence						
Supreme	198	6.0%	10	3.2%	208	5.8%
District	1318	40.1%	87	28.2%	1405	39.0%
Local	1339	40.7%	175	56.6%	1514	42.1%
State Parole Authority	403	12.2%	33	10.7%	436	12.1%
Drug Court	28	0.9%	4	1.3%	32	0.9%
Children's Court	4	0.1%	--	--	4	0.1%
Federal/Other	--	--	--	--	--	--
Immigration Authority	--	--	--	--	--	--
State of Court of most serious offence						
New South Wales	3281	99.7%	309	100.0%	3590	99.7%
Victoria	2	0.1%	--	--	2	0.1%
Queensland	1	*	--	--	1	*
South Australia	--	--	--	--	--	--
Western Australia	--	--	--	--	--	--
Tasmania	--	--	--	--	--	--
Northern Territory	1	*	--	--	1	*
Australian Capital Territory	5	0.2%	--	--	5	0.1%
Overseas	--	--	--	--	--	--
TOTAL	3290	100.0%	309	100.0%	3599	100.0%

* Less than 0.05%

1. Remand/trial includes awaiting sentence - see explanatory note (g).

Table 2.3 Characteristics of offences and sentences

	GENDER				TOTAL	
	Male		Female			
Most serious offence (MSO) ¹						
Homicide and related offences	194	5.9%	17	5.5%	211	5.9%
Murder	142	4.3%	12	3.9%	154	4.3%
Attempted murder	23	0.7%	3	1.0%	26	0.7%
Manslaughter and driving causing death	29	0.9%	2	0.6%	31	0.9%
Acts intended to cause injury	1214	36.9%	111	35.9%	1325	36.8%
Assault	1052	32.0%	101	32.7%	1153	32.0%
Other acts intended to cause injury	162	4.9%	10	3.2%	172	4.8%
Sexual assault and related offences	352	10.7%	12	3.9%	364	10.1%
Sexual assault	323	9.8%	10	3.2%	333	9.3%
Non-assaultive sexual offences	29	0.9%	2	0.6%	31	0.9%
Dangerous or negligent acts endang. persons	108	3.3%	14	4.5%	122	3.4%
Dangerous or negligent operation of vehicle	108	3.3%	14	4.5%	122	3.4%
Other dangerous or negligent acts	--	--	--	--	--	--
Abduction, harassment and other offences	54	1.6%	6	1.9%	60	1.7%
Abduction and kidnapping	43	1.3%	5	1.6%	48	1.3%
Deprivation of liberty / false imprisonment	--	--	--	--	--	--
Harassment and threatening behaviour	11	0.3%	1	0.3%	12	0.3%
Robbery, extortion and related offences	250	7.6%	22	7.1%	272	7.6%
Robbery	249	7.6%	21	6.8%	270	7.5%
Blackmail and extortion	1	*	1	0.3%	2	0.1%
Unlawful entry with intent/burglary, B&E	253	7.7%	30	9.7%	283	7.9%
Theft and related offences	79	2.4%	18	5.8%	97	2.7%
Motor vehicle theft and related offences	24	0.7%	3	1.0%	27	0.8%
Theft (except motor vehicles)	46	1.4%	14	4.5%	60	1.7%
Receive or handle proceeds of crime	9	0.3%	1	0.3%	10	0.3%
Fraud, deception and related offences	38	1.2%	14	4.5%	52	1.4%
Obtain benefit by deception	32	1.0%	13	4.2%	45	1.3%
Forgery and counterfeiting	1	*	1	0.3%	2	0.1%
Deceptive business/government practices	--	--	--	--	--	--
Other fraud and deception offences	5	0.2%	--	--	5	0.1%
Illicit drug offences	150	4.6%	19	6.1%	169	4.7%
Import or export illicit drugs	9	0.3%	--	--	9	0.3%
Deal or traffic in illicit drugs	134	4.1%	17	5.5%	151	4.2%
Manufacture or cultivate illicit drugs	7	0.2%	1	0.3%	8	0.2%
Possess and/or use illicit drugs	--	--	1	0.3%	1	*
Other illicit drug offences	--	--	--	--	--	--
Prohibited and regulated weapons etc.	64	1.9%	4	1.3%	68	1.9%
Prohibited weapons/explosives	24	0.7%	2	0.6%	26	0.7%
Regulated weapons/explosives	40	1.2%	2	0.6%	42	1.2%
Property damage and environmental pollution	28	0.9%	--	--	28	0.8%
Public order offences	13	0.4%	2	0.6%	15	0.4%
Disorderly conduct	9	0.3%	1	0.3%	10	0.3%
Regulated public order offences	--	--	--	--	--	--
Offensive conduct	4	0.1%	1	0.3%	5	0.1%
Traffic and vehicle regulatory offences	33	1.0%	6	1.9%	39	1.1%
Driving licence offences	26	0.8%	6	1.9%	32	0.9%
Road vehicle registration and roadworthiness	--	--	--	--	--	--
Regulatory driving offences	7	0.2%	--	--	7	0.2%
Pedestrian offences	--	--	--	--	--	--
Offences against justice procedures etc.	457	13.9%	34	11.0%	491	13.6%
Breach of custodial order offences	2	0.1%	--	--	2	0.1%
Breach of community-based orders	421	12.8%	33	10.7%	454	12.6%
Breach of violence and non-violence orders	21	0.6%	1	0.3%	22	0.6%
Offences against government operations	--	--	--	--	--	--
Offences against government security	4	0.1%	--	--	4	0.1%
Offences against justice procedures	9	0.3%	--	--	9	0.3%
Miscellaneous offences	3	0.1%	--	--	3	0.1%
TOTAL	3290	100.0%	309	100.0%	3599	100.0%

* Less than 0.05%

1. Offences classified under Australian and New Zealand Standard Offence Classification 2011 - see explanatory

Table 2.3 Characteristics of offences and sentences (continued)

	GENDER				TOTAL	
	Male		Female			
Length of aggregate sentence						
Not under sentence	1151	35.0%	149	48.2%	1300	36.1%
1 - 7 days	1	*	--	--	1	*
8 - < 1 month	--	--	--	--	--	--
1 month - < 3 months	31	0.9%	6	1.9%	37	1.0%
3 months - < 6 months	116	3.5%	11	3.6%	127	3.5%
6 months - < 9 months	120	3.6%	17	5.5%	137	3.8%
9 months - < 1 year	151	4.6%	11	3.6%	162	4.5%
1 - < 2 years	544	16.5%	51	16.5%	595	16.5%
2 - < 5 years	552	16.8%	38	12.3%	590	16.4%
5 - < 7 years	179	5.4%	8	2.6%	187	5.2%
7 - < 10 years	176	5.3%	5	1.6%	181	5.0%
10 - < 15 years	99	3.0%	2	0.6%	101	2.8%
15 - < 20 years	50	1.5%	3	1.0%	53	1.5%
20 years +	90	2.7%	4	1.3%	94	2.6%
Life	9	0.3%	1	0.3%	10	0.3%
Forensic patient	21	0.6%	3	1.0%	24	0.7%
Indeterminate sentences - Life sentence and Forensic patients						
Not Life or Forensic/correctional patient	3260	99.1%	305	98.7%	3565	99.1%
Life 'Natural Life'	9	0.3%	1	0.3%	10	0.3%
Life - yet to be redetermined	--	--	--	--	--	--
Life / Non Parole period	--	--	--	--	--	--
Life - Breach of parole/licence	--	--	--	--	--	--
Life (ACT)	--	--	--	--	--	--
Life (Federal)	--	--	--	--	--	--
Life (Overseas)	--	--	--	--	--	--
Forensic patient - Indeterminate term	15	0.5%	2	0.6%	17	0.5%
Forensic patient - Limiting term	--	--	--	--	--	--
Correctional patient ¹ - under sentence	5	0.2%	1	0.3%	6	0.2%
Correctional patient ¹ - unsentenced	1	*	--	--	1	*
Is any offence a federal offence ?						
Yes	113	3.4%	7	2.3%	120	3.3%
No	3177	96.6%	302	97.7%	3479	96.7%
Is the most serious offence a federal offence ?						
Yes	76	2.3%	7	2.3%	83	2.3%
No	3214	97.7%	302	97.7%	3516	97.7%
TOTAL	3290	100.0%	309	100.0%	3599	100.0%

* less than 0.05%.

1. See explanatory note (h).

Table 2.3 Characteristics of offences and sentences (continued)

	GENDER				TOTAL	
	Male		Female			
Is the inmate serving a term for breach of parole, licence or escape ?						
Not breach of parole/licence or escapee	2420	73.6%	265	85.8%	2685	74.6%
Breach of parole	866	26.3%	44	14.2%	910	25.3%
Breach of licence	--	--	--	--	--	--
Escape	3	0.1%	--	--	3	0.1%
Breach of parole and escape	1	*	--	--	1	*
Are there any other offences for inmates whose MSO is breach of parole/licence ?						
MSO not breach of parole/licence	3285	99.8%	309	100.0%	3594	99.9%
No other offence (excludes fines)	1	*	--	--	1	*
Remand for other offence(s)	2	0.1%	--	--	2	0.1%
Convicted for other offence(s)	2	0.1%	--	--	2	0.1%
Is the inmate in full-time custody having breached an order (other than parole/licence)?						
In full-time - no breach	3049	92.7%	276	89.3%	3325	92.4%
Sentenced - breach of periodic detention	--	--	--	--	--	--
Sentenced - breach of home detention	--	--	--	--	--	--
Sentenced - breach of intensive correction order	241	7.3%	33	10.7%	274	7.6%
Remanded - breach of periodic detention	--	--	--	--	--	--
Remanded - breach of home detention	--	--	--	--	--	--
Remanded - breach of intensive correction order	--	--	--	--	--	--
Time to serve to earliest date of release (EDR)						
Unsentenced	1151	35.0%	149	48.2%	1300	36.1%
Earliest date of release lapsed	62	1.9%	3	1.0%	65	1.8%
< 3 months	606	18.4%	62	20.1%	668	18.6%
3 - < 6 months	450	13.7%	39	12.6%	489	13.6%
6 - < 12 months	432	13.1%	24	7.8%	456	12.7%
1 - < 2 years	275	8.4%	15	4.9%	290	8.1%
2 - < 5 years	167	5.1%	7	2.3%	174	4.8%
5 years +	117	3.6%	6	1.9%	123	3.4%
Indeterminate (Life/forensic patient) ¹	30	0.9%	4	1.3%	34	0.9%
TOTAL	3290	100.0%	309	100.0%	3599	100.0%

1. Includes all inmates with a type of sentence of Life or Forensic patient regardless of whether an earliest date of release exists for that inmate.

Table 2.4 Inmate security classification

	GENDER				TOTAL	
	Male		Female			
Security classification of inmate ¹						
Maximum security classification						
Maximum security - Convicted	510	15.5%	8	2.6%	518	14.4%
Life	8	0.2%	1	0.3%	9	0.3%
AA	--	--	--	--	--	--
A1	6	0.2%	--	--	6	0.2%
A2	399	12.1%	--	--	399	11.1%
E1	97	2.9%	7	2.3%	104	2.9%
Category 5 (Female)	--	--	--	--	--	--
Maximum security - Unconvicted	427	13.0%	2	0.6%	429	11.9%
Unconvicted AA	3	0.1%	--	--	3	0.1%
Unconvicted A1	--	--	--	--	--	--
Unconvicted A2	378	11.5%	--	--	378	10.5%
Unconvicted E1	46	1.4%	2	0.6%	48	1.3%
Unconvicted Category 5 (Female)	--	--	--	--	--	--
Sub-total Maximum security	937	28.5%	10	3.2%	947	26.3%
Medium security classification						
Medium security - Convicted	607	18.4%	22	7.1%	629	17.5%
B	491	14.9%	--	--	491	13.6%
E2	116	3.5%	7	2.3%	123	3.4%
Category 4 (Female)	--	--	15	4.9%	15	0.4%
Medium security - Unconvicted	594	18.1%	36	11.7%	630	17.5%
Unconvicted B	525	16.0%	--	--	525	14.6%
Unconvicted E2	69	2.1%	8	2.6%	77	2.1%
Unconvicted Category 4 (Female)	--	--	28	9.1%	28	0.8%
Sub-total Medium security	1201	36.5%	58	18.8%	1259	35.0%
Minimum security classification						
Minimum security - Convicted	921	28.0%	116	37.5%	1037	28.8%
C1	335	10.2%	--	--	335	9.3%
C2	546	16.6%	--	--	546	15.2%
C3	28	0.9%	--	--	28	0.8%
Compulsory Drug Treatment Centre	12	0.4%	--	--	12	0.3%
Category 3 (Female)	--	--	39	12.6%	39	1.1%
Category 2 (Female)	--	--	76	24.6%	76	2.1%
Category 1 (Female)	--	--	1	0.3%	1	*
Minimum security - Unconvicted	88	2.7%	83	26.9%	171	4.8%
Unconvicted C1	88	2.7%	--	--	88	2.4%
Unconvicted Category 3 (Female)	--	--	40	12.9%	40	1.1%
Unconvicted Category 2 (Female)	--	--	43	13.9%	43	1.2%
Sub-total Minimum	1009	30.7%	199	64.4%	1208	33.6%
Unclassified						
Unclassified - convicted	41	1.2%	9	2.9%	50	1.4%
Unclassified - unconvicted	102	3.1%	33	10.7%	135	3.8%
Sub-total Unclassified	143	4.3%	42	13.6%	185	5.1%
TOTAL	3290	100.0%	309	100.0%	3599	100.0%

1. Some convicted inmates may have an "unconvicted" inmate classification if they were facing further and more serious charges or had not been re-classified at the time of the census. Therefore the total number of inmates with "convicted" inmate classifications may not be equal to the total number of convicted inmates.

* less than 0.05%.

Table 2.5 Location and correctional centre security classification

	GENDER				TOTAL	
	Male		Female			
Correctional centre by security rating						
Maximum security						
Bathurst (Maximum)	59	1.8%	--	--	59	1.6%
Clarence (Maximum)	284	8.6%	48	15.5%	332	9.2%
Dillwynia (Maximum)	--	--	85	27.5%	85	2.4%
Goulburn (Maximum)	69	2.1%	--	--	69	1.9%
High Risk Management	18	0.5%	--	--	18	0.5%
Hunter	53	1.6%	--	--	53	1.5%
Junee (Maximum)	62	1.9%	1	0.3%	63	1.8%
Lithgow	105	3.2%	--	--	105	2.9%
Long Bay Hospital	37	1.1%	1	0.3%	38	1.1%
Macquarie	104	3.2%	--	--	104	2.9%
Metropolitan Remand and Reception	234	7.1%	--	--	234	6.5%
Metro. Special Programs (Maximum)	101	3.1%	--	--	101	2.8%
Mid-North Coast (Maximum)	240	7.3%	--	--	240	6.7%
Parklea (Maximum)	268	8.1%	--	--	268	7.4%
Shortland	194	5.9%	--	--	194	5.4%
Silverwater Women's	--	--	69	22.3%	69	1.9%
South Coast (Maximum)	145	4.4%	--	--	145	4.0%
Special Purpose Centre (Maximum)	3	0.1%	--	--	3	0.1%
Wellington (Maximum)	35	1.1%	1	0.3%	36	1.0%
Sub-total Maximum security	2011	61.1%	205	66.3%	2216	61.6%
Medium security						
Bathurst (Medium)	139	4.2%	4	1.3%	143	4.0%
Broken Hill (Medium)	20	0.6%	--	--	20	0.6%
Cooma	43	1.3%	--	--	43	1.2%
Dillwynia (Medium)	--	--	61	19.7%	61	1.7%
John Morony (Medium)	108	3.3%	--	--	108	3.0%
Junee (Medium)	202	6.1%	--	--	202	5.6%
Mid-North Coast (Medium)	--	--	17	5.5%	17	0.5%
South Coast (Medium)	42	1.3%	--	--	42	1.2%
Tamworth (Medium)	21	0.6%	--	--	21	0.6%
Sub-total Medium security	575	17.5%	82	26.5%	657	18.3%
Minimum security						
Bathurst (Minimum)	58	1.8%	--	--	58	1.6%
Broken Hill (Minimum)	9	0.3%	5	1.6%	14	0.4%
Cessnock (Minimum)	182	5.5%	--	--	182	5.1%
Compulsory Drug Treatment	11	0.3%	--	--	11	0.3%
Clarence (Minimum)	39	1.2%	--	--	39	1.1%
Cooma	5	0.2%	--	--	5	0.1%
Dawn de Loas	19	0.6%	--	--	19	0.5%
Dillwynia (Minimum)	--	--	--	--	--	--
Emu Plains	--	--	8	2.6%	8	0.2%
Geoffrey Pearce	65	2.0%	--	--	65	1.8%
Glen Innes	8	0.2%	--	--	8	0.2%
Goulburn (Minimum)	24	0.7%	--	--	24	0.7%
Junee (Minimum)	27	0.8%	--	--	27	0.8%
Kirkconnell	29	0.9%	--	--	29	0.8%
Mannus	8	0.2%	--	--	8	0.2%
Metro. Special Programs (Minimum)	37	1.1%	--	--	37	1.0%
Mid-North Coast (Minimum)	38	1.2%	--	--	38	1.1%
Mary Wade	4	0.1%	--	--	4	0.1%
Oberon	13	0.4%	--	--	13	0.4%
Parklea (Minimum)	16	0.5%	--	--	16	0.4%
South Coast (Minimum)	46	1.4%	--	--	46	1.3%
St. Heliers	38	1.2%	--	--	38	1.1%
Tamworth (Minimum)	3	0.1%	--	--	3	0.1%
Wellington (Minimum)	6	0.2%	3	1.0%	9	0.3%
Sub-total Minimum security	685	20.8%	16	5.2%	701	19.5%
Sub-total Correctional Centres	3271	99.4%	303	98.1%	3574	99.3%

Table 2.5 Location and correctional centre security classification (continued)

	GENDER				TOTAL	
	Male		Female			
Transitional Centres						
Bolwara House Transitional Centres	--	--	4	1.3%	4	0.1%
Parramatta Transitional Centre	--	--	--	--	--	--
Sub-total Transitional Centres	--	--	4	1.3%	4	0.1%
Court/Police Cell Complexes						
Albury	--	--	--	--	--	--
Amber Laurel	1	*	2	0.6%	3	0.1%
Batemans Bay	--	--	--	--	--	--
Dubbo	6	0.2%	--	--	6	0.2%
Kariong	6	0.2%	--	--	6	0.2%
Lismore	2	0.1%	--	--	2	0.1%
Moree	--	--	--	--	--	--
Newcastle	--	--	--	--	--	--
Parramatta	--	--	--	--	--	--
Penrith	--	--	--	--	--	--
Port Macquarie	1	*	--	--	1	*
Queanbeyan	--	--	--	--	--	--
Surry Hills (Sydney)	--	--	--	--	--	--
Wagga Wagga	2	0.1%	--	--	2	0.1%
Wollongong	1	*	--	--	1	*
Sub-total Court/Police Cell Complexes	19	0.6%	2	0.6%	21	0.6%
TOTAL	3290	100.0%	309	100.0%	3599	100.0%

* less than 0.05%

Table 2.6 Country of birth - Indigenous inmates

Country of birth	GENDER				TOTAL	
	Male		Female			
Country of birth						
OCEANIA AND ANTARCTICA						
AUSTRALIA (incl. ext. territories)	3125	95.0%	287	92.9%	3412	94.8%
- New South Wales	2318	70.5%	187	60.5%	2505	69.6%
- Victoria	21	0.6%	1	0.3%	22	0.6%
- Queensland	101	3.1%	9	2.9%	110	3.1%
- South Australia	11	0.3%	1	0.3%	12	0.3%
- Western Australia	12	0.4%	2	0.6%	14	0.4%
- Tasmania	3	0.1%	--	--	3	0.1%
- Northern Territory	3	0.1%	--	--	3	0.1%
- Australian Capital Territory	15	0.5%	2	0.6%	17	0.5%
- Australian External Territories	--	--	--	--	--	--
- Australia (not further defined)	641	19.5%	85	27.5%	726	20.2%
- Norfolk Island	--	--	--	--	--	--
NEW ZEALAND	12	0.4%	1	0.3%	13	0.4%
MELANESIA	1	*	--	--	1	*
- New Caledonia	--	--	--	--	--	--
- Papua New Guinea	--	--	--	--	--	--
- Solomon Islands	1	*	--	--	1	*
- Vanuatu	--	--	--	--	--	--
MICRONESIA	--	--	--	--	--	--
POLYNESIA (excl. Hawaii)	8	0.2%	--	--	8	0.2%
- Cook Islands	--	--	--	--	--	--
- Fiji	4	0.1%	--	--	4	0.1%
- French Polynesia	--	--	--	--	--	--
- Samoa	3	0.1%	--	--	3	0.1%
- Samoa American	--	--	--	--	--	--
- Tokelau	--	--	--	--	--	--
- Tonga	1	*	--	--	1	*
- Tuvalu	--	--	--	--	--	--
Sub-total						
OCEANIA AND ANTARCTICA	3146	95.6%	288	93.2%	3434	95.4%
NORTH-WEST EUROPE	3	0.1%	--	--	3	0.1%
SOUTHERN AND EASTERN EUROPE	1	*	--	--	1	*
NORTH AFRICA AND THE MIDDLE EAST	4	0.1%	--	--	4	0.1%
SOUTHEAST ASIA	--	--	--	--	--	--
NORTH-EAST ASIA	2	0.1%	--	--	2	0.1%
SOUTHERN & CENTRAL ASIA	--	--	--	--	--	--
AMERICAS	2	0.1%	--	--	2	0.1%
SUB-SAHARAN AFRICA	1	*	--	--	1	*
UNKNOWN	131	4.0%	21	6.8%	152	4.2%
TOTAL	3290	100.0%	309	100.0%	3599	100.0%

* Less than 0.05%

Table 2.7 Statistical area of last known address

Statistical area (Level 4)	GENDER				TOTAL	
	Male		Female			
New South Wales						
Capital Region	84	2.6%	6	1.9%	90	2.5%
Central Coast	144	4.4%	19	6.1%	163	4.5%
Central West	183	5.6%	16	5.2%	199	5.5%
Coffs Harbour - Grafton	77	2.3%	4	1.3%	81	2.3%
Far West and Orana	304	9.2%	17	5.5%	321	8.9%
Hunter Valley exc Newcastle	174	5.3%	16	5.2%	190	5.3%
Illawarra	127	3.9%	17	5.5%	144	4.0%
Mid North Coast	193	5.9%	10	3.2%	203	5.6%
Murray	76	2.3%	5	1.6%	81	2.3%
New England and North West	270	8.2%	23	7.4%	293	8.1%
Newcastle and Lake Macquarie	224	6.8%	15	4.9%	239	6.6%
Richmond - Tweed	108	3.3%	9	2.9%	117	3.3%
Riverina	176	5.3%	15	4.9%	191	5.3%
Southern Highlands and Shoalhaven	85	2.6%	3	1.0%	88	2.4%
Sydney - Baulkham Hills and Hawkesbury	6	0.2%	1	0.3%	7	0.2%
Sydney - Blacktown	227	6.9%	24	7.8%	251	7.0%
Sydney - City and Inner South	163	5.0%	29	9.4%	192	5.3%
Sydney - Eastern Suburbs	49	1.5%	4	1.3%	53	1.5%
Sydney - Inner South West	45	1.4%	6	1.9%	51	1.4%
Sydney - Inner West	32	1.0%	2	0.6%	34	0.9%
Sydney - North Sydney and Hornsby	10	0.3%	1	0.3%	11	0.3%
Sydney - Northern Beaches	16	0.5%	1	0.3%	17	0.5%
Sydney - Outer South West	113	3.4%	12	3.9%	125	3.5%
Sydney - Outer West and Blue Mountains	131	4.0%	10	3.2%	141	3.9%
Sydney - Parramatta	102	3.1%	22	7.1%	124	3.4%
Sydney - Ryde	5	0.2%	1	0.3%	6	0.2%
Sydney - South West	93	2.8%	13	4.2%	106	2.9%
Sydney - Sutherland	20	0.6%	7	2.3%	27	0.8%
Sub-total New South Wales	3237	98.4%	308	99.7%	3545	98.5%
Victoria	11	0.3%	1	0.3%	12	0.3%
Queensland	20	0.6%	--	--	20	0.6%
South Australia	2	0.1%	--	--	2	0.1%
Western Australia	1	*	--	--	1	*
Tasmania	1	*	--	--	1	*
Northern Territory	--	--	--	--	--	--
Australian Capital Territory	2	0.1%	--	--	2	0.1%
Sub-total other states/territories	37	1.1%	1	0.3%	38	1.1%
No fixed abode	1	*	--	--	1	*
Overseas	--	--	--	--	--	--
Unknown	15	0.5%	--	--	15	0.4%
TOTAL	3290	100.0%	309	100.0%	3599	100.0%

Section 3

MOST SERIOUS OFFENCE

- Aggregate sentence
(Sentenced inmates)

and

Time in custody
(Unsentenced inmates)

Table 3.1.1 Most serious offence by aggregate sentence imposed - Sentenced male inmates in full-time custody

Most serious offence ¹	Aggregate sentence														TOTAL
	< 1 mth	1-<3 mths	3-<6 mths	6-<9 mths	9-<12 mths	1-<2 years	2-< 5 years	5-<7 years	7-< 10 years	10-<15 years	15-<20 years	20 + years	Life Forensic Patient		
Homicide and related	--	--	--	--	--	2	33	24	34	61	97	342	68	27	688
Acts intended to cause injury	--	2	23	58	98	566	554	152	128	71	10	4	--	30	1696
Sexual assault and related	--	--	1	6	7	64	291	212	283	371	163	126	--	15	1539
Dangerous or negligent acts endang. persons	--	1	5	5	14	87	81	13	8	1	--	--	--	--	215
Abduction, harassment etc.	--	--	1	3	5	11	25	29	23	10	3	1	--	2	113
Robbery, extortion etc.	--	--	--	1	1	11	181	114	71	46	16	4	--	1	446
Unlawful entry with intent/burglary, B&E	--	--	--	3	10	116	190	49	22	10	1	1	--	3	405
Theft and related	--	4	13	24	21	80	39	2	3	1	--	--	--	1	188
Fraud, deception and related	--	1	6	3	10	49	66	18	8	8	--	--	--	1	170
Illicit drug offences	--	2	4	3	8	69	237	194	240	203	58	53	10	3	1084
Weapons and explosives	--	--	--	2	4	36	72	25	13	5	2	--	--	--	159
Property damage and environmental pollution	--	1	1	4	3	16	17	6	5	1	1	--	--	2	57
Public order offences	--	2	6	4	6	15	5	--	--	--	--	--	--	--	38
Traffic and vehicle regulatory offences	--	--	17	29	39	46	3	--	--	--	--	--	--	--	134
Offences against justice procedures etc.	6	78	204	212	170	312	105	5	9	3	6	13	--	8	1131
Miscellaneous offences	--	1	--	--	--	2	12	1	1	--	1	4	2	2	26
TOTAL	6	92	281	357	396	1482	1911	844	848	791	358	548	80	95	8089

1. Offences classified under Australian and New Zealand Standard Offence Classification (2011) - see explanatory note (j).

Table 3.1.2**Most serious offence by aggregate sentence imposed -
Sentenced female inmates in full-time custody**

Most serious offence ¹	Aggregate sentence														TOTAL
	< 1 mth	1-<3 mths	3-<6 mths	6-<9 mths	9-<12 mths	1-<2 years	2-< 5 years	5-<7 years	7-< 10 years	10-<15 years	15-<20 years	20 + years	Life	Forensic Patient	
Homicide and related	--	--	--	--	--	--	5	4	6	4	7	27	2	--	55
Acts intended to cause injury	--	1	--	5	10	34	22	7	8	1	--	--	--	2	90
Sexual assault and related	--	--	--	--	--	--	6	2	5	3	5	2	--	--	23
Dangerous or negligent acts endang. persons	--	--	--	--	--	6	7	--	--	--	--	--	--	--	13
Abduction, harassment etc.	--	--	--	--	--	--	5	3	1	--	1	--	--	--	10
Robbery, extortion etc.	--	--	--	--	--	1	7	1	2	1	--	--	--	2	14
Unlawful entry with intent/burglary, B&E	--	--	--	--	2	18	10	2	--	--	--	--	--	1	33
Theft and related	--	3	2	1	3	10	8	2	--	--	--	--	--	--	29
Fraud, deception and related	--	--	--	--	1	11	24	7	4	1	--	--	--	--	48
Illicit drug offences	--	--	1	--	--	7	22	8	13	4	3	1	1	--	60
Weapons and explosives	--	--	--	--	--	2	2	--	--	1	--	--	--	--	5
Property damage and environmental pollution	--	--	--	--	--	1	--	--	--	--	--	--	--	--	1
Public order offences	--	--	--	--	--	1	2	--	1	--	--	--	--	--	4
Traffic and vehicle regulatory offences	--	--	2	2	2	4	--	--	--	--	--	--	--	--	10
Offences against justice procedures etc.	--	11	18	16	9	16	8	--	--	--	--	--	--	--	78
Miscellaneous offences	--	--	--	--	--	--	--	--	--	--	--	--	--	--	--
TOTAL	--	15	23	24	27	111	128	36	40	15	16	30	3	5	473

1. Offences classified under Australian and New Zealand Standard Offence Classification (2011) - see explanatory note (j).

Table 3.1.3 Most serious offence by aggregate sentence imposed - All sentenced inmates in full-time custody

Most serious offence ¹	Aggregate sentence														TOTAL
	< 1 mth	1-<3 mths	3-<6 mths	6-<9 mths	9-<12 mths	1-<2 years	2-< 5 years	5-<7 years	7-< 10 years	10-<15 years	15-<20 years	20 + years	Life	Forensic Patient	
Homicide and related	--	--	--	--	--	2	38	28	40	65	104	369	70	27	743
Acts intended to cause injury	--	3	23	63	108	600	576	159	136	72	10	4	--	32	1786
Sexual assault and related	--	--	1	6	7	64	297	214	288	374	168	128	--	15	1562
Dangerous or negligent acts endang. persons	--	1	5	5	14	93	88	13	8	1	--	--	--	--	228
Abduction, harassment etc.	--	--	1	3	5	11	30	32	24	10	4	1	--	2	123
Robbery, extortion etc.	--	--	--	1	1	12	188	115	73	47	16	4	--	3	460
Unlawful entry with intent/burglary, B&E	--	--	--	3	12	134	200	51	22	10	1	1	--	4	438
Theft and related	--	7	15	25	24	90	47	4	3	1	--	--	--	1	217
Fraud, deception and related	--	1	6	3	11	60	90	25	12	9	--	--	--	1	218
Illicit drug offences	--	2	5	3	8	76	259	202	253	207	61	54	11	3	1144
Weapons and explosives	--	--	--	2	4	38	74	25	13	6	2	--	--	--	164
Property damage and environmental pollution	--	1	1	4	3	17	17	6	5	1	1	--	--	2	58
Public order offences	--	2	6	4	6	16	7	--	1	--	--	--	--	--	42
Traffic and vehicle regulatory offences	--	--	19	31	41	50	3	--	--	--	--	--	--	--	144
Offences against justice procedures etc.	6	89	222	228	179	328	113	5	9	3	6	13	--	8	1209
Miscellaneous offences	--	1	--	--	--	2	12	1	1	--	1	4	2	2	26
TOTAL	6	107	304	381	423	1593	2039	880	888	806	374	578	83	100	8562

1. Offences classified under Australian and New Zealand Standard Offence Classification (2011) - see explanatory note (j).

Table 3.2.1**Most serious offence by aggregate sentence imposed -
Sentenced male inmates in full-time custody (percentage)**

Most serious offence ¹	Aggregate sentence														TOTAL
	< 1 mth	1-<3 mths	3-<6 mths	6-<9 mths	9-<12 mths	1-<2 years	2-< 5 years	5-<7 years	7-< 10 years	10-<15 years	15-<20 years	20 + years	Life	Forensic Patient	
Homicide and related	--	--	--	--	--	0.1	1.7	2.8	4.0	7.7	27.1	62.4	85.0	28.4	8.5
Acts intended to cause injury	--	2.2	8.2	16.2	24.7	38.2	29.0	18.0	15.1	9.0	2.8	0.7	--	31.6	21.0
Sexual assault and related	--	--	0.4	1.7	1.8	4.3	15.2	25.1	33.4	46.9	45.5	23.0	--	15.8	19.0
Dangerous or negligent acts endang. persons	--	1.1	1.8	1.4	3.5	5.9	4.2	1.5	0.9	0.1	--	--	--	--	2.7
Abduction, harassment etc.	--	--	0.4	0.8	1.3	0.7	1.3	3.4	2.7	1.3	0.8	0.2	--	2.1	1.4
Robbery, extortion etc.	--	--	--	0.3	0.3	0.7	9.5	13.5	8.4	5.8	4.5	0.7	--	1.1	5.5
Unlawful entry with intent/burglary, B&E	--	--	--	0.8	2.5	7.8	9.9	5.8	2.6	1.3	0.3	0.2	--	3.2	5.0
Theft and related	--	4.3	4.6	6.7	5.3	5.4	2.0	0.2	0.4	0.1	--	--	--	1.1	2.3
Fraud, deception and related	--	1.1	2.1	0.8	2.5	3.3	3.5	2.1	0.9	1.0	--	--	--	1.1	2.1
Illicit drug offences	--	2.2	1.4	0.8	2.0	4.7	12.4	23.0	28.3	25.7	16.2	9.7	12.5	3.2	13.4
Weapons and explosives	--	--	--	0.6	1.0	2.4	3.8	3.0	1.5	0.6	0.6	--	--	--	2.0
Property damage and environmental pollution	--	1.1	0.4	1.1	0.8	1.1	0.9	0.7	0.6	0.1	0.3	--	--	2.1	0.7
Public order offences	--	2.2	2.1	1.1	1.5	1.0	0.3	--	--	--	--	--	--	--	0.5
Traffic and vehicle regulatory offences	--	--	6.0	8.1	9.8	3.1	0.2	--	--	--	--	--	--	--	1.7
Offences against justice procedures etc.	100.0	84.8	72.6	59.4	42.9	21.1	5.5	0.6	1.1	0.4	1.7	2.4	--	8.4	14.0
Miscellaneous offences	--	1.1	--	--	--	0.1	0.6	0.1	0.1	--	0.3	0.7	2.5	2.1	0.3
TOTAL	100	100	100	100	100	100	100	100	100	100	100	100	100	100	100

1. Offences classified under Australian and New Zealand Standard Offence Classification (2011) - see explanatory note (j).

Table 3.2.2 Most serious offence by aggregate sentence imposed - Sentenced female inmates in full-time custody (percentage)

Most serious offence ¹	Aggregate sentence														TOTAL
	< 1 mth	1-<3 mths	3-<6 mths	6-<9 mths	9-<12 mths	1-<2 years	2-< 5 years	5-<7 years	7-< 10 years	10-<15 years	15-<20 years	20 + years	Life	Forensic Patient	
Homicide and related	--	--	--	--	--	--	3.9	11.1	15.0	26.7	43.8	90.0	66.7	--	11.6
Acts intended to cause injury	--	6.7	--	20.8	37.0	30.6	17.2	19.4	20.0	6.7	--	--	--	40.0	19.0
Sexual assault and related	--	--	--	--	--	--	4.7	5.6	12.5	20.0	31.3	6.7	--	--	4.9
Dangerous or negligent acts endang. persons	--	--	--	--	--	5.4	5.5	--	--	--	--	--	--	--	2.7
Abduction, harassment etc.	--	--	--	--	--	--	3.9	8.3	2.5	--	6.3	--	--	--	2.1
Robbery, extortion etc.	--	--	--	--	--	0.9	5.5	2.8	5.0	6.7	--	--	--	40.0	3.0
Unlawful entry with intent/burglary, B&E	--	--	--	--	7.4	16.2	7.8	5.6	--	--	--	--	--	20.0	7.0
Theft and related	--	20.0	8.7	4.2	11.1	9.0	6.3	5.6	--	--	--	--	--	--	6.1
Fraud, deception and related	--	--	--	--	3.7	9.9	18.8	19.4	10.0	6.7	--	--	--	--	10.1
Illicit drug offences	--	--	4.3	--	--	6.3	17.2	22.2	32.5	26.7	18.8	3.3	33.3	--	12.7
Weapons and explosives	--	--	--	--	--	1.8	1.6	--	--	6.7	--	--	--	--	1.1
Property damage and environmental pollution	--	--	--	--	--	0.9	--	--	--	--	--	--	--	--	0.2
Public order offences	--	--	--	--	--	0.9	1.6	--	2.5	--	--	--	--	--	0.8
Traffic and vehicle regulatory offences	--	--	8.7	8.3	7.4	3.6	--	--	--	--	--	--	--	--	2.1
Offences against justice procedures etc.	--	73.3	78.3	66.7	33.3	14.4	6.3	--	--	--	--	--	--	--	16.5
Miscellaneous offences	--	--	--	--	--	--	--	--	--	--	--	--	--	--	--
TOTAL	--	100	100	100	100	100	100	100	100	100	100	100	100	100	100

1. Offences classified under Australian and New Zealand Standard Offence Classification (2011) - see explanatory note (j).

Table 3.2.3**Most serious offence by aggregate sentence imposed -
All sentenced inmates in full-time custody (percentage)**

Most serious offence ¹	Aggregate sentence														TOTAL
	< 1 mth	1-<3 mths	3-<6 mths	6-<9 mths	9-<12 mths	1-<2 years	2-< 5 years	5-<7 years	7-< 10 years	10-<15 years	15-<20 years	20 + years	Life	Forensic Patient	
Homicide and related	--	--	--	--	--	0.1	1.9	3.2	4.5	8.1	27.8	63.8	84.3	27.0	8.7
Acts intended to cause injury	--	2.8	7.6	16.5	25.5	37.7	28.2	18.1	15.3	8.9	2.7	0.7	--	32.0	20.9
Sexual assault and related	--	--	0.3	1.6	1.7	4.0	14.6	24.3	32.4	46.4	44.9	22.1	--	15.0	18.2
Dangerous or negligent acts endang. persons	--	0.9	1.6	1.3	3.3	5.8	4.3	1.5	0.9	0.1	--	--	--	--	2.7
Abduction, harassment etc.	--	--	0.3	0.8	1.2	0.7	1.5	3.6	2.7	1.2	1.1	0.2	--	2.0	1.4
Robbery, extortion etc.	--	--	--	0.3	0.2	0.8	9.2	13.1	8.2	5.8	4.3	0.7	--	3.0	5.4
Unlawful entry with intent/burglary, B&E	--	--	--	0.8	2.8	8.4	9.8	5.8	2.5	1.2	0.3	0.2	--	4.0	5.1
Theft and related	--	6.5	4.9	6.6	5.7	5.6	2.3	0.5	0.3	0.1	--	--	--	1.0	2.5
Fraud, deception and related	--	0.9	2.0	0.8	2.6	3.8	4.4	2.8	1.4	1.1	--	--	--	1.0	2.5
Illicit drug offences	--	1.9	1.6	0.8	1.9	4.8	12.7	23.0	28.5	25.7	16.3	9.3	13.3	3.0	13.4
Weapons and explosives	--	--	--	0.5	0.9	2.4	3.6	2.8	1.5	0.7	0.5	--	--	--	1.9
Property damage and environmental pollution	--	0.9	0.3	1.0	0.7	1.1	0.8	0.7	0.6	0.1	0.3	--	--	2.0	0.7
Public order offences	--	1.9	2.0	1.0	1.4	1.0	0.3	--	0.1	--	--	--	--	--	0.5
Traffic and vehicle regulatory offences	--	--	6.3	8.1	9.7	3.1	0.1	--	--	--	--	--	--	--	1.7
Offences against justice procedures etc.	100.0	83.2	73.0	59.8	42.3	20.6	5.5	0.6	1.0	0.4	1.6	2.2	--	8.0	14.1
Miscellaneous offences	--	0.9	--	--	--	0.1	0.6	0.1	0.1	--	0.3	0.7	2.4	2.0	0.3
TOTAL	100	100	100	100	100	100	100	100	100	100	100	100	100	100	100

1. Offences classified under Australian and New Zealand Standard Offence Classification (2011) - see explanatory note (j).

**Table 3.3.1 Most serious offence by time in custody -
Unsentenced male inmates in full-time custody**

Most serious offence ²	Time in custody ¹														TOTAL	
	< 1 month		1 - < 3 months		3 - < 6 months		6 - < 9 months		9 - < 12 months		1 - < 2 years		2+ years			
	No.	%	No.	%	No.	%	No.	%	No.	%	No.	%	No.	%	No.	%
Homicide and related	2	0.2	17	1.9	33	3.9	33	6.3	27	8.1	57	11.1	54	40.9	223	5.4
Acts intended to cause injury	423	46.5	426	47.6	352	41.1	151	28.7	90	26.9	96	18.7	14	10.6	1552	37.2
Sexual assault and related	66	7.3	97	10.8	138	16.1	109	20.7	75	22.5	116	22.6	29	22.0	630	15.1
Dangerous or negligent acts endang. persons	33	3.6	30	3.4	24	2.8	10	1.9	2	0.6	8	1.6	--	--	107	2.6
Abduction, harassment etc.	13	1.4	22	2.5	16	1.9	10	1.9	7	2.1	17	3.3	--	--	85	2.0
Robbery, extortion etc.	34	3.7	36	4.0	40	4.7	27	5.1	17	5.1	32	6.2	3	2.3	189	4.5
Unlawful entry with intent/burglary, B&E	67	7.4	49	5.5	56	6.5	25	4.7	11	3.3	14	2.7	--	--	222	5.3
Theft and related	28	3.1	22	2.5	7	0.8	2	0.4	5	1.5	2	0.4	1	0.8	67	1.6
Fraud, deception and related	18	2.0	13	1.5	11	1.3	5	0.9	2	0.6	5	1.0	--	--	54	1.3
Illicit drug offences	148	16.3	115	12.8	135	15.8	128	24.3	85	25.4	140	27.2	28	21.2	779	18.7
Weapons and explosives	20	2.2	32	3.6	20	2.3	15	2.8	9	2.7	12	2.3	1	0.8	109	2.6
Property damage and environmental pollution	10	1.1	4	0.4	6	0.7	7	1.3	3	0.9	2	0.4	--	--	32	0.8
Public order offences	2	0.2	3	0.3	2	0.2	--	--	--	--	1	0.2	--	--	8	0.2
Traffic and vehicle regulatory offences	9	1.0	1	0.1	--	--	--	--	--	--	2	0.4	--	--	12	0.3
Offences against justice procedures etc.	30	3.3	22	2.5	14	1.6	5	0.9	1	0.3	8	1.6	1	0.8	81	1.9
Miscellaneous offences	6	0.7	6	0.7	2	0.2	--	--	--	--	2	0.4	1	0.8	17	0.4
TOTAL	909	100	895	100	856	100	527	100	334	100	514	100	132	100	4167	100

1. These statistics may include inmates who completed serving a sentence(s) for other offences(s) during the current imprisonment episode but remained in custody as an unsentenced inmate pending the outcome of other charges or awaiting deportation. The time spent in custody therefore includes any time served under sentence in the current episode.

2. Offences classified under Australian and New Zealand Standard Offence Classification (2011) - see explanatory note (j).

Table 3.3.2**Most serious offence by time in custody -
Unsentenced female inmates in full-time custody**

Most serious offence ²	Time in custody ¹														TOTAL	
	< 1 month		1 - < 3 months		3 - < 6 months		6 - < 9 months		9 - < 12 months		1 - < 2 years		2+ years			
	No.	%	No.	%	No.	%	No.	%	No.	%	No.	%	No.	%	No.	%
Homicide and related	--	--	1	1.0	4	5.9	3	7.9	4	11.4	11	37.9	5	71.4	28	7.1
Acts intended to cause injury	45	36.9	39	39.8	28	41.2	10	26.3	6	17.1	3	10.3	--	--	131	33.0
Sexual assault and related	--	--	2	2.0	7	10.3	4	10.5	1	2.9	4	13.8	--	--	18	4.5
Dangerous or negligent acts endang. persons	9	7.4	2	2.0	1	1.5	--	--	--	--	--	--	--	--	12	3.0
Abduction, harassment etc.	1	0.8	2	2.0	3	4.4	3	7.9	2	5.7	--	--	--	--	11	2.8
Robbery, extortion etc.	6	4.9	10	10.2	5	7.4	2	5.3	1	2.9	1	3.4	--	--	25	6.3
Unlawful entry with intent/burglary, B&E	11	9.0	6	6.1	3	4.4	--	--	6	17.1	--	--	--	--	26	6.5
Theft and related	12	9.8	7	7.1	1	1.5	--	--	--	--	--	--	--	--	20	5.0
Fraud, deception and related	10	8.2	6	6.1	2	2.9	1	2.6	--	--	2	6.9	--	--	21	5.3
Illicit drug offences	20	16.4	18	18.4	11	16.2	15	39.5	13	37.1	8	27.6	1	14.3	86	21.7
Weapons and explosives	3	2.5	3	3.1	1	1.5	--	--	1	2.9	--	--	--	--	8	2.0
Property damage and environmental pollution	--	--	1	1.0	1	1.5	--	--	--	--	--	--	--	--	2	0.5
Public order offences	--	--	--	--	--	--	--	--	--	--	--	--	--	--	--	--
Traffic and vehicle regulatory offences	--	--	1	1.0	--	--	--	--	--	--	--	--	--	--	1	0.3
Offences against justice procedures etc.	5	4.1	--	--	1	1.5	--	--	1	2.9	--	--	--	--	7	1.8
Miscellaneous offences	--	--	--	--	--	--	--	--	--	--	--	--	1	14.3	1	0.3
TOTAL	122	100	98	100	68	100	38	100	35	100	29	100	7	100	397	100

1. These statistics may include inmates who completed serving a sentence(s) for other offences(s) during the current imprisonment episode but remained in custody as an unsentenced inmate pending the outcome of other charges or awaiting deportation. The time spent in custody therefore includes any time served under sentence in the current episode.

2. Offences classified under Australian and New Zealand Standard Offence Classification (2011) - see explanatory note (j).

Table 3.3.3 Most serious offence by time in custody - All unsentenced inmates in full-time custody

Most serious offence ²	Time in custody ¹														TOTAL	
	< 1 month		1 - < 3 months		3 - < 6 months		6 - < 9 months		9 - < 12 months		1 - < 2 years		2+ years			
	No.	%	No.	%	No.	%	No.	%	No.	%	No.	%	No.	%	No.	%
Homicide and related	2	0.2	18	1.8	37	4.0	36	6.4	31	8.4	68	12.5	59	42.4	251	5.5
Acts intended to cause injury	468	45.4	465	46.8	380	41.1	161	28.5	96	26.0	99	18.2	14	10.1	1683	36.9
Sexual assault and related	66	6.4	99	10.0	145	15.7	113	20.0	76	20.6	120	22.1	29	20.9	648	14.2
Dangerous or negligent acts endang. persons	42	4.1	32	3.2	25	2.7	10	1.8	2	0.5	8	1.5	--	--	119	2.6
Abduction, harassment etc.	14	1.4	24	2.4	19	2.1	13	2.3	9	2.4	17	3.1	--	--	96	2.1
Robbery, extortion etc.	40	3.9	46	4.6	45	4.9	29	5.1	18	4.9	33	6.1	3	2.2	214	4.7
Unlawful entry with intent/burglary, B&E	78	7.6	55	5.5	59	6.4	25	4.4	17	4.6	14	2.6	--	--	248	5.4
Theft and related	40	3.9	29	2.9	8	0.9	2	0.4	5	1.4	2	0.4	1	0.7	87	1.9
Fraud, deception and related	28	2.7	19	1.9	13	1.4	6	1.1	2	0.5	7	1.3	--	--	75	1.6
Illicit drug offences	168	16.3	133	13.4	146	15.8	143	25.3	98	26.6	148	27.3	29	20.9	865	19.0
Weapons and explosives	23	2.2	35	3.5	21	2.3	15	2.7	10	2.7	12	2.2	1	0.7	117	2.6
Property damage and environmental pollution	10	1.0	5	0.5	7	0.8	7	1.2	3	0.8	2	0.4	--	--	34	0.7
Public order offences	2	0.2	3	0.3	2	0.2	--	--	--	--	1	0.2	--	--	8	0.2
Traffic and vehicle regulatory offences	9	0.9	2	0.2	--	--	--	--	--	--	2	0.4	--	--	13	0.3
Offences against justice procedures etc.	35	3.4	22	2.2	15	1.6	5	0.9	2	0.5	8	1.5	1	0.7	88	1.9
Miscellaneous offences	6	0.6	6	0.6	2	0.2	--	--	--	--	2	0.4	2	1.4	18	0.4
TOTAL	1031	100	993	100	924	100	565	100	369	100	543	100	139	100	4564	100

1. These statistics may include inmates who completed serving a sentence(s) for other offences(s) during the current imprisonment episode but remained in custody as an unsentenced inmate pending the outcome of other charges or awaiting deportation. The time spent in custody therefore includes any time served under sentence in the current episode.

2. Offences classified under Australian and New Zealand Standard Offence Classification (2011) - see explanatory note (j).

Section 4

POPULATION TRENDS

Table 4.1 Trends in the total inmate population by place of detention as at 30 June; 1982 to 2021 (includes periodic detainees)

Year	FULL-TIME CUSTODY				Periodic Detention Centres ⁴	TOTAL POPULATION ³
	Gazetted Correctional Centres	Transitional Centres ¹	Police/Court Complexes ²	Sub-total Full-time custody		
1982	3466	--	--	3466	253	3719
1983	3487	--	--	3487	246	3733
1984	3093	--	--	3093	261	3354
1985	3842	--	--	3842	273	4115
1986	3927	--	--	3927	302	4229
1987	4169	--	--	4169	382	4551
1988	4269	--	--	4269	422	4691
1989	4736	--	--	4736	546	5282
1990	5538	--	--	5538	829	6367
1991	5960	--	--	5960	1143	7103
1992	6228	--	--	6228	1257	7485
1993	6392	--	--	6392	1240	7632
1994	6420	--	--	6420	1291	7711
1995	6384	--	--	6384	1365	7749
1996	6267	--	--	6267	1424	7691
1997	6403	8	--	6411	1546	7957
1998	6475	14	--	6489	1335	7824
1999	7242	17	34	7293	1140	8433
2000	7330	15	2	7347	1202	8549
2001	7735	20	46	7801	1045	8846
2002	7793	23	60	7876	883	8759
2003	8009	26	59	8094	787	8881
2004	8498	29	60	8587	742	9329
2005	8948	27	30	9005	855	9860
2006	9051	27	52	9130	724	9854
2007	9486	28	43	9557	761	10318
2008	9701	30	128	9859	690	10549
2009	10276	29	63	10368	792	11160
2010	10233	35	25	10293	691	10984
2011	9888	28	29	9945	119	10064
2012	9566	27	50	9643	23	9666
2013	9842	20	58	9920	8	9928
2014	10536	30	12	10578	7	10585
2015	11644	30	114	11788	7	11795
2016	12435	25	163	12623	8	12631
2017	12974	25	149	13148	8	13156
2018	13584	23	115	13722	4	13726
2019	13363	26	69	13458	--	13458
2020	12631	32	68	12731	--	12731
2021	13023	24	79	13126	--	13126

1. Transitional Centres commenced operation in September 1996.

2. Corrective Services NSW began managing a small number of Police/Court Complexes in 1992 and operations in this area have increased since 1999. Data on the number of inmates held in these places of detention as at 30 June each year is not available prior to 1999.

3. Total Inmate Population incorporates full-time custody and periodic detention (before 2019). Prior to 2007 published totals for "Total inmates" included inmates held in gazetted correctional centres and periodic detention centres only and excluded transitional centres and police/court complexes - see explanatory note (b).

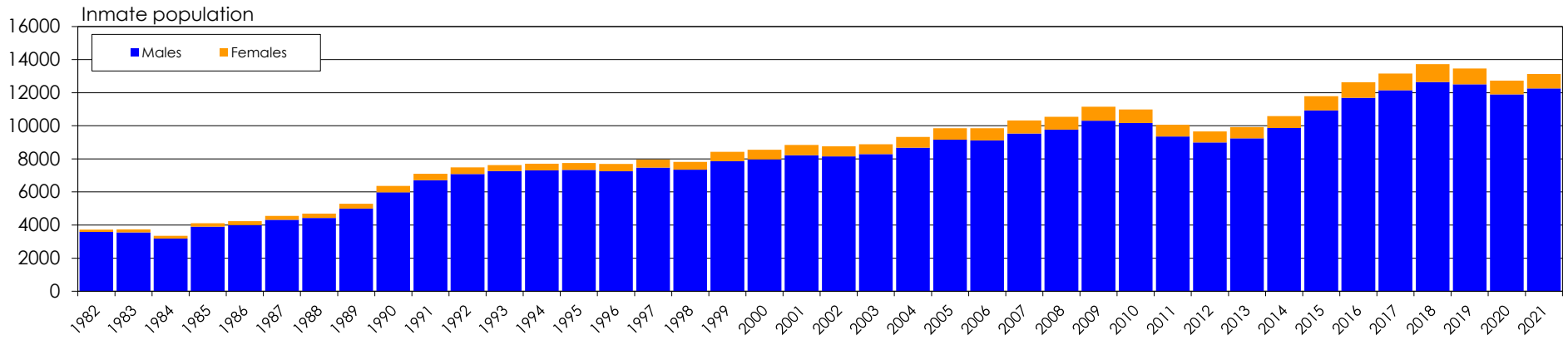
4. Periodic detainees are no longer shown from 2019 onwards.

**Table 4.2 Trends in the gender of the inmate population as at 30 June;
1982 to 2021 (includes periodic detainees ¹)**

Year	FULL-TIME CUSTODY		PERIODIC DETENTION ¹		TOTAL	
	Males	Female	Male	Female	Male	Female
1982	3335	131	247	6	3582	137
1983	3316	171	235	11	3551	182
1984	2936	157	252	9	3188	166
1985	3642	200	265	8	3907	208
1986	3726	201	281	21	4007	222
1987	3961	208	352	30	4313	238
1988	4038	231	398	24	4436	255
1989	4473	263	519	27	4992	290
1990	5197	341	785	44	5982	385
1991	5626	334	1085	58	6711	392
1992	5898	330	1189	68	7087	398
1993	6087	305	1184	56	7271	361
1994	6100	320	1202	89	7302	409
1995	6070	314	1270	95	7340	409
1996	5929	338	1324	100	7253	438
1997	6057	354	1419	127	7476	481
1998	6117	372	1225	110	7342	482
1999	6832	461	1031	109	7863	570
2000	6877	470	1095	107	7972	577
2001	7259	542	967	78	8226	620
2002	7340	536	814	69	8154	605
2003	7565	529	724	63	8289	592
2004	7988	599	683	59	8671	658
2005	8384	621	783	72	9167	693
2006	8450	680	664	60	9114	740
2007	8852	705	682	79	9534	784
2008	9137	722	631	59	9768	781
2009	9587	781	719	73	10306	854
2010	9529	764	638	53	10167	817
2011	9253	692	108	11	9361	703
2012	8977	666	21	2	8998	668
2013	9240	680	7	1	9247	681
2014	9861	717	6	1	9867	718
2015	10926	862	6	1	10932	863
2016	11682	941	7	1	11689	942
2017	12143	1005	6	2	12149	1007
2018	12650	1072	4	0	12654	1072
2019	12509	949	--	--	12509	949
2020	11895	836	--	--	11895	836
2021	12256	870	--	--	12256	870

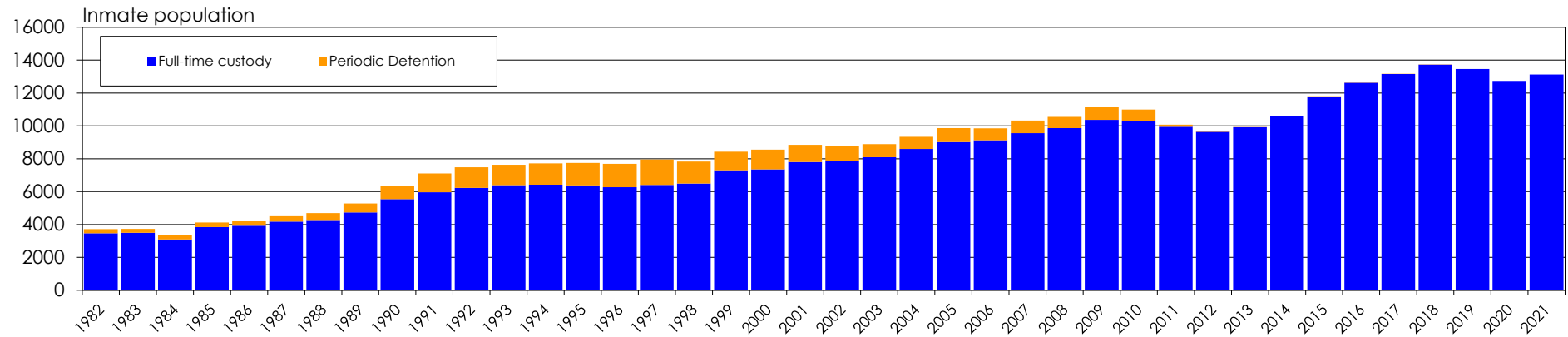
1. Periodic detainees are no longer shown from 2019 onwards.

Figure 1: Trends in the gender of the inmate population (includes periodic detention) as at 30 June each year



Periodic detainees are no longer shown from 2019 onwards.

Figure 2: Trends in the inmate custodial program (includes periodic detention) as at 30 June each year



Periodic detainees are no longer shown from 2019 onwards.

Table 4.3 Trends in the Aboriginal/TSI ¹ status of inmates as at 30 June; 1982 to 2021 (includes periodic detainees ²)

Year	Aboriginal/TSI		Non-Aboriginal		Unknown		All inmates
	Number	%	Number	%	Number	%	Number
1982	216	5.8%	3474	93.4%	29	0.8%	3719
1983	236	6.3%	3394	90.9%	103	2.8%	3733
1984	242	7.2%	3047	90.8%	65	1.9%	3354
1985	304	7.4%	3726	90.5%	85	2.1%	4115
1986	338	8.0%	3762	89.0%	129	3.1%	4229
1987	369	8.1%	4105	90.2%	77	1.7%	4551
1988	385	8.2%	4097	87.3%	209	4.5%	4691
1989	415	7.9%	4858	92.0%	9	0.2%	5282
1990	579	9.1%	5510	86.5%	278	4.4%	6367
1991	664	9.3%	6069	85.4%	370	5.2%	7103
1992	648	8.7%	6740	90.0%	97	1.3%	7485
1993	729	9.6%	6809	89.2%	94	1.2%	7632
1994	827	10.7%	6828	88.5%	56	0.7%	7711
1995	888	11.5%	6754	87.2%	107	1.4%	7749
1996	952	12.4%	6598	85.8%	141	1.8%	7691
1997	1010	12.7%	6817	85.7%	130	1.6%	7957
1998	1091	13.9%	6689	85.5%	44	0.6%	7824
1999	1265	15.0%	7142	84.7%	26	0.3%	8433
2000	1249	14.6%	7250	84.8%	50	0.6%	8549
2001	1339	15.1%	7419	83.9%	88	1.0%	8846
2002	1503	17.2%	7166	81.8%	90	1.0%	8759
2003	1563	17.6%	7099	79.9%	219	2.5%	8881
2004	1576	16.9%	7629	81.8%	124	1.3%	9329
2005	1699	17.2%	7874	79.9%	287	2.9%	9860
2006	1966	20.0%	7681	77.9%	207	2.1%	9854
2007	2072	20.1%	8046	78.0%	200	1.9%	10318
2008	2150	20.4%	8153	77.3%	246	2.3%	10549
2009	2382	21.3%	8394	75.2%	384	3.4%	11160
2010	2337	21.3%	8352	76.0%	295	2.7%	10984
2011	2303	22.9%	7744	76.9%	17	0.2%	10064
2012	2243	23.2%	7293	75.5%	130	1.3%	9666
2013	2318	23.3%	7485	75.4%	125	1.3%	9928
2014	2503	23.6%	8027	75.8%	55	0.5%	10585
2015	2849	24.2%	8938	75.8%	8	0.1%	11795
2016	3037	24.0%	9584	75.9%	10	0.1%	12631
2017	3200	24.3%	9947	75.6%	9	0.1%	13156
2018	3383	24.6%	10334	75.3%	9	0.1%	13726
2019	3436	25.5%	10010	74.4%	12	0.1%	13458
2020	3337	26.2%	9385	73.7%	9	0.1%	12731
2021	3599	27.4%	9515	72.5%	12	0.1%	13126

1. The method for determining Aboriginality status changed in 2002 - see explanatory note (d).
2. Periodic detainees are no longer shown from 2019 onwards.

**Table 4.4 Trends in legal status of inmates as at 30 June;
1982 to 2021 (includes periodic detainees ⁴)**

Year	Sentenced ¹		Appellant		Unconvicted ²		Other ³	
	Number	%	Number	%	Number	%	Number	%
1982	3110	83.6%	150	4.0%	456	12.3%	3	0.1%
1983	3098	83.0%	114	3.1%	519	13.9%	2	0.1%
1984	2722	81.2%	150	4.5%	479	14.3%	3	0.1%
1985	3339	81.1%	144	3.5%	629	15.3%	3	0.1%
1986	3477	82.2%	133	3.1%	614	14.5%	5	0.1%
1987	3702	81.3%	181	4.0%	663	14.6%	5	0.1%
1988	3712	79.1%	236	5.0%	734	15.6%	9	0.2%
1989	4193	79.4%	351	6.6%	738	14.0%	--	--
1990	4983	78.3%	535	8.4%	837	13.1%	12	0.2%
1991	5651	79.6%	609	8.6%	839	11.8%	4	0.1%
1992	6056	80.9%	676	9.0%	748	10.0%	5	0.1%
1993	6161	80.7%	691	9.1%	777	10.2%	3	0.0%
1994	6353	82.4%	617	8.0%	736	9.5%	5	0.1%
1995	6487	83.7%	543	7.0%	712	9.2%	7	0.1%
1996	6374	82.9%	513	6.7%	800	10.4%	4	0.1%
1997	6506	81.8%	459	5.8%	987	12.4%	5	0.1%
1998	6343	81.1%	426	5.4%	1048	13.4%	7	0.1%
1999	6519	77.3%	593	7.0%	1281	15.2%	40	0.5%
2000	6488	75.9%	582	6.8%	1434	16.8%	45	0.5%
2001	6636	75.0%	570	6.4%	1605	18.1%	35	0.4%
2002	6599	75.3%	517	5.9%	1634	18.7%	9	0.1%
2003	6580	74.1%	464	5.2%	1831	20.6%	6	0.1%
2004	6870	73.6%	585	6.3%	1870	20.0%	4	0.0%
2005	7381	74.9%	478	4.8%	1994	20.2%	7	0.1%
2006	7342	74.5%	370	3.8%	2136	21.7%	6	0.1%
2007	7658	74.2%	346	3.4%	2307	22.4%	7	0.1%
2008	7726	73.2%	349	3.3%	2469	23.4%	5	0.0%
2009	8213	73.6%	335	3.0%	2593	23.2%	19	0.2%
2010	8204	74.7%	276	2.5%	2502	22.8%	2	0.0%
2011	7125	70.8%	301	3.0%	2635	26.2%	3	0.0%
2012	6902	71.4%	278	2.9%	2486	25.7%	--	--
2013	6868	69.2%	281	2.8%	2778	28.0%	1	0.0%
2014	7511	71.0%	325	3.1%	2748	26.0%	1	0.0%
2015	7826	66.4%	378	3.2%	3590	30.4%	1	0.0%
2016	8110	64.2%	372	2.9%	4148	32.8%	1	0.0%
2017	8529	64.8%	371	2.8%	4256	32.4%	--	--
2018	8699	63.4%	436	3.2%	4591	33.4%	--	--
2019	8479	63.0%	460	3.4%	4519	33.6%	--	--
2020	8207	64.5%	387	3.0%	4136	32.5%	1	0.0%
2021	8074	61.5%	488	3.7%	4563	34.8%	1	0.0%

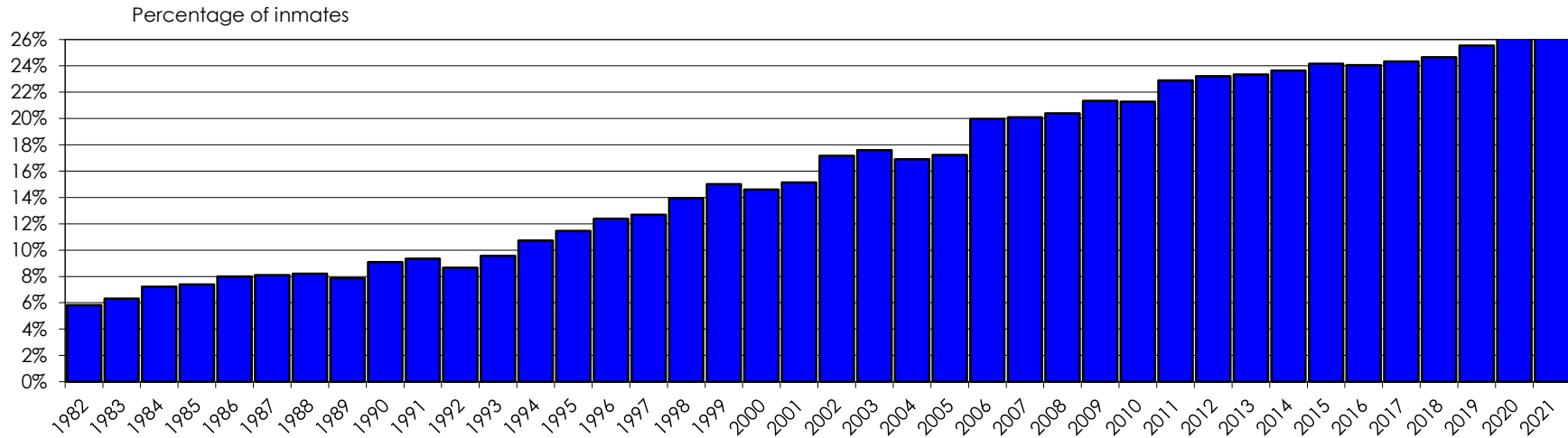
1. Sentenced includes inmates with a legal status of forensic patient.

2. Unconvicted includes remand/trial and awaiting sentence.

3. Other includes awaiting deportation, awaiting extradition and civil inmates.

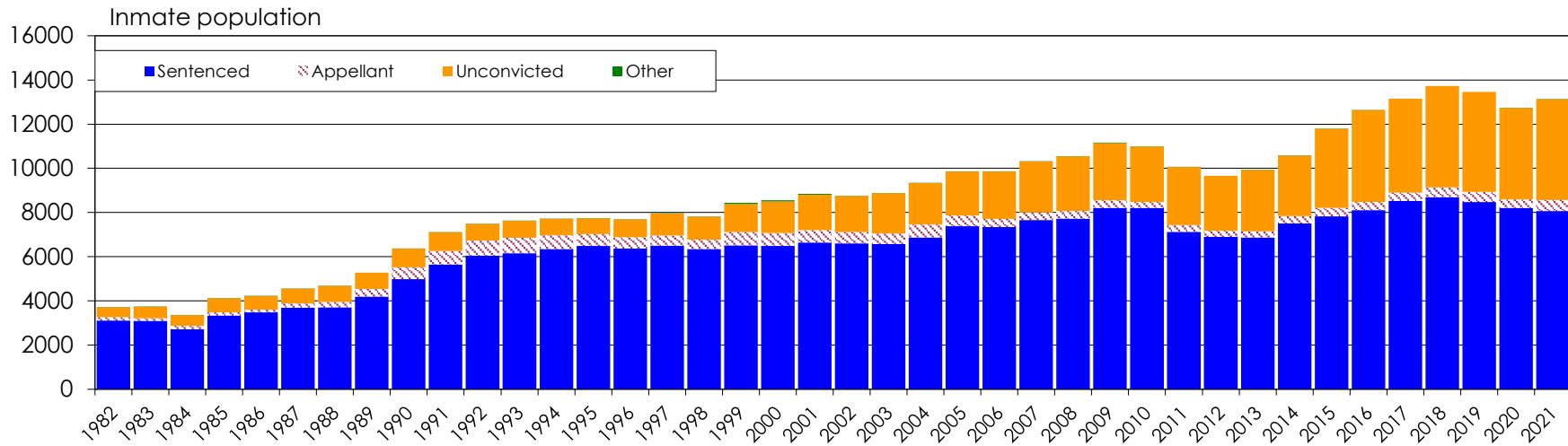
4. Periodic detainees are no longer shown from 2019 onwards.

Figure 3: Trends in the Aboriginal/TSI inmates (includes periodic detention) as at 30 June each year



Note: Method for determining Aboriginality status changed in 2002. See explanatory note (d).
 Periodic detainees are no longer shown from 2019 onwards.

Figure 4: Trends in the legal status of inmates (includes periodic detention) as at 30 June each year



Note: Sentenced inmates includes Forensic patients. Other inmates includes awaiting sentence, deportees, extradition and civil inmates
 Periodic detainees are no longer shown from 2019 onwards.

**Table 4.5 Trends in the Aboriginal/TSI¹ inmate population -
by gender as at 30 June; 1982 to 2021 (includes periodic detainees²)**

Year	Males		Females		Total
	Number	%	Number	%	Number
1982	210	97.2%	6	2.8%	216
1983	226	95.8%	10	4.2%	236
1984	234	96.7%	8	3.3%	242
1985	294	96.7%	10	3.3%	304
1986	325	96.2%	13	3.8%	338
1987	350	94.9%	19	5.1%	369
1988	358	93.0%	27	7.0%	385
1989	382	92.0%	33	8.0%	415
1990	543	93.8%	36	6.2%	579
1991	613	92.3%	51	7.7%	664
1992	599	92.4%	49	7.6%	648
1993	685	94.0%	44	6.0%	729
1994	764	92.4%	63	7.6%	827
1995	831	93.6%	57	6.4%	888
1996	878	92.2%	74	7.8%	952
1997	934	92.5%	76	7.5%	1010
1998	994	91.1%	97	8.9%	1091
1999	1152	91.1%	113	8.9%	1265
2000	1139	91.2%	110	8.8%	1249
2001	1201	89.7%	138	10.3%	1339
2002	1346	89.6%	157	10.4%	1503
2003	1403	89.8%	160	10.2%	1563
2004	1420	90.1%	156	9.9%	1576
2005	1521	89.5%	178	10.5%	1699
2006	1747	88.9%	219	11.1%	1966
2007	1846	89.1%	226	10.9%	2072
2008	1930	89.8%	220	10.2%	2150
2009	2146	90.1%	236	9.9%	2382
2010	2122	90.8%	215	9.2%	2337
2011	2092	90.8%	211	9.2%	2303
2012	2046	91.2%	197	8.8%	2243
2013	2117	91.3%	201	8.7%	2318
2014	2267	90.6%	236	9.4%	2503
2015	2549	89.5%	300	10.5%	2849
2016	2727	89.8%	310	10.2%	3037
2017	2880	90.0%	320	10.0%	3200
2018	3006	88.9%	377	11.1%	3383
2019	3132	91.2%	304	8.8%	3436
2020	3056	91.6%	281	8.4%	3337
2021	3290	91.4%	309	8.6%	3599

1. The method for determining Aboriginality status changed in 2002 - see explanatory note (d).

2. Periodic detainees are no longer shown from 2019 onwards.

Table 4.6 Trends in the Aboriginal/TSI¹ inmate population by gender and custodial program as at 30 June; 1982 to 2021 (includes periodic detainees)

Year	FULL-TIME CUSTODY							PERIODIC DETENTION ³						
	Male			Female			Total %	Male			Female			Total %
	ATSI	Non-ATSI ²	% ATSI	ATSI	Non-ATSI ²	% ATSI		ATSI	Non-ATSI ²	% ATSI	ATSI	Non-ATSI ²	% ATSI	
1982	203	3132	6.1%	6	125	4.6%	6.0%	7	240	2.8%	--	6	--	2.8%
1983	220	3096	6.6%	10	161	5.8%	6.6%	6	229	2.6%	--	11	--	2.4%
1984	229	2707	7.8%	8	149	5.1%	7.7%	5	247	2.0%	--	9	--	1.9%
1985	287	3355	7.9%	9	191	4.5%	7.7%	7	258	2.6%	1	7	12.5%	2.9%
1986	319	3407	8.6%	13	188	6.5%	8.5%	6	275	2.1%	--	21	--	2.0%
1987	338	3623	8.5%	16	192	7.7%	8.5%	12	340	3.4%	3	27	10.0%	3.9%
1988	344	3694	8.5%	24	207	10.4%	8.6%	14	384	3.5%	3	21	12.5%	4.0%
1989	357	4116	8.0%	32	231	12.2%	8.2%	25	494	4.8%	1	26	3.7%	4.8%
1990	515	4682	9.9%	35	306	10.3%	9.9%	28	757	3.6%	1	43	2.3%	3.5%
1991	578	5048	10.3%	47	287	14.1%	10.5%	35	1050	3.2%	4	54	6.9%	3.4%
1992	567	5331	9.6%	43	287	13.0%	9.8%	32	1157	2.7%	6	62	8.8%	3.0%
1993	647	5440	10.6%	40	265	13.1%	10.7%	38	1146	3.2%	4	52	7.1%	3.4%
1994	717	5383	11.8%	59	261	18.4%	12.1%	47	1155	3.9%	4	85	4.5%	4.0%
1995	773	5297	12.7%	46	268	14.6%	12.8%	58	1212	4.6%	11	84	11.6%	5.1%
1996	803	5126	13.5%	66	272	19.5%	13.9%	75	1249	5.7%	8	92	8.0%	5.8%
1997	851	5206	14.0%	61	293	17.2%	14.2%	83	1336	5.8%	15	112	11.8%	6.3%
1998	903	5214	14.8%	84	288	22.6%	15.2%	91	1134	7.4%	13	97	11.8%	7.8%
1999	1083	5749	15.9%	107	354	23.2%	16.3%	69	962	6.7%	6	103	5.5%	6.6%
2000	1068	5809	15.5%	99	371	21.1%	15.9%	71	1024	6.5%	11	96	10.3%	6.8%
2001	1126	6133	15.5%	130	412	24.0%	16.1%	75	892	7.8%	8	70	10.3%	7.9%
2002	1276	6064	17.4%	149	387	27.8%	18.1%	70	744	8.6%	8	61	11.6%	8.8%
2003	1355	6210	17.9%	149	380	28.2%	18.6%	48	676	6.6%	11	52	17.5%	7.5%
2004	1377	6611	17.2%	152	447	25.4%	17.8%	43	640	6.3%	4	55	6.8%	6.3%
2005	1472	6912	17.6%	168	453	27.1%	18.2%	49	734	6.3%	10	62	13.9%	6.9%
2006	1705	6745	20.2%	210	470	30.9%	21.0%	42	622	6.3%	9	51	15.0%	7.0%
2007	1779	7073	20.1%	214	491	30.4%	20.9%	67	615	9.8%	12	67	15.2%	10.4%
2008	1866	7271	20.4%	214	508	29.6%	21.1%	64	567	10.1%	6	53	10.2%	10.1%
2009	2071	7516	21.6%	230	551	29.4%	22.2%	75	644	10.4%	6	67	8.2%	10.2%
2010	2066	7463	21.7%	209	555	27.4%	22.1%	56	582	8.8%	6	47	11.3%	9.0%
2011	2080	7173	22.5%	209	483	30.2%	23.0%	12	96	11.1%	2	9	18.2%	11.8%
2012	2045	6932	22.8%	196	470	29.4%	23.2%	1	20	4.8%	1	1	50.0%	8.7%
2013	2116	7124	22.9%	200	480	29.4%	23.3%	1	6	14.3%	1	--	100.0%	25.0%
2014	2266	7595	23.0%	235	482	32.8%	23.6%	1	5	16.7%	1	--	100.0%	28.6%
2015	2548	8378	23.3%	299	563	34.7%	24.2%	1	5	16.7%	1	--	100.0%	28.6%
2016	2726	8956	23.3%	309	632	32.8%	24.0%	1	6	14.3%	1	--	100.0%	25.0%
2017	2878	9265	23.7%	319	686	31.7%	24.3%	2	4	33.3%	1	1	50.0%	37.5%
2018	3004	9646	23.7%	377	695	35.2%	24.6%	2	2	50.0%	--	--	--	50.0%
2019	3132	9377	25.0%	304	645	32.0%	25.5%	0	0	0.0%	--	--	--	0.0%
2020	3056	8839	25.7%	281	555	33.6%	26.2%	0	0	0.0%	--	--	--	0.0%
2021	3290	8966	26.8%	309	561	35.5%	27.4%	0	0	0.0%	--	--	--	0.0%

ATSI - Aboriginal/Torres Strait Islander.

1. The method for determining Aboriginality status changed in 2002. See explanatory note (d).

2. Non-ATSI includes inmates with unknown Aboriginal/Torres Strait Islander status.

3. Periodic detainees are no longer shown from 2019 onwards.

Table 4.7 Trends in the security classification of convicted inmates ¹ held in full-time custody as at 30 June; 1983 to 2021 (excludes periodic detainees)

Year	Maximum ²		Medium ³		Minimum ⁴		Unclassified	
	Number	%	Number	%	Number	%	Number	%
1983	956	31.3%	189	6.2%	1702	55.7%	209	6.8%
1984	898	34.4%	268	10.3%	1396	53.5%	49	1.9%
1985	920	28.9%	362	11.4%	1845	57.9%	60	1.9%
1986	1004	30.3%	566	17.1%	1680	50.7%	61	1.8%
1987	871	25.9%	625	18.6%	1868	55.4%	5	0.1%
1988	884	25.2%	701	19.9%	1926	54.8%	3	0.1%
1989	1005	26.6%	770	20.4%	2005	53.0%	--	--
1990	1062	22.6%	866	18.5%	2643	56.4%	118	2.5%
1991	777	15.2%	1102	21.5%	2864	56.0%	374	7.3%
1992	726	13.3%	1306	23.9%	3229	59.0%	214	3.9%
1993	717	12.8%	1195	21.3%	3474	61.9%	226	4.0%
1994	727	12.8%	1102	19.4%	3538	62.3%	312	5.5%
1995	607	10.7%	1066	18.8%	3763	66.4%	229	4.0%
1996	479	8.8%	1149	21.0%	3709	67.9%	126	2.3%
1997	489	9.0%	1126	20.8%	3725	68.7%	79	1.5%
1998	502	9.3%	1094	20.2%	3732	68.9%	92	1.7%
1999	557	9.3%	1184	19.8%	3988	66.8%	243	4.1%
2000	530	9.0%	1191	20.3%	4019	68.5%	128	2.2%
2001	544	8.8%	1185	19.2%	4291	69.6%	141	2.3%
2002	481	7.7%	1141	18.3%	4239	68.0%	372	6.0%
2003	647	10.3%	1212	19.4%	4304	68.8%	94	1.5%
2004	741	11.0%	1329	19.8%	4483	66.8%	160	2.4%
2005	817	11.7%	1359	19.4%	4703	67.1%	125	1.8%
2006	809	11.6%	1287	18.4%	4737	67.8%	155	2.2%
2007	833	11.5%	1352	18.7%	4938	68.2%	120	1.7%
2008	781	10.6%	1399	18.9%	4964	67.2%	241	3.3%
2009	694	8.9%	1364	17.6%	5547	71.5%	151	1.9%
2010	764	9.8%	1464	18.8%	5434	69.8%	127	1.6%
2011	795	10.9%	1381	18.9%	5044	69.0%	87	1.2%
2012	756	10.6%	1425	19.9%	4849	67.8%	127	1.8%
2013	729	10.2%	1475	20.7%	4813	67.4%	124	1.7%
2014	791	10.1%	1761	22.5%	5147	65.7%	130	1.7%
2015	854	10.4%	1855	22.6%	5315	64.8%	173	2.1%
2016	993	11.7%	1978	23.3%	5312	62.6%	199	2.3%
2017	1169	13.1%	2054	23.1%	5513	62.0%	156	1.8%
2018	1210	13.3%	1956	21.4%	5799	63.5%	166	1.8%
2019	1370	15.3%	1975	22.1%	5453	61.0%	141	1.6%
2020	1628	18.9%	1975	23.0%	4846	56.4%	145	1.7%
2021	1571	18.3%	1889	22.1%	4916	57.4%	186	2.2%

1. Based on legal status (rather than inmate classification).

2. Maximum comprises classifications Life, AA, A1, A2 and E1 and Category 5 (females).

3. Medium comprises classifications B, E2 and Category 4 (females).

4. Minimum comprises inmates classified C1, C2 or C3 and Category 3, Category 2 and Category 1 (females). Includes Compulsory Drug Treatment Centres inmates (from 2007 onwards).

Table 4.8 Trends in most serious offence (ANZSOC¹) as at 30 June; 1982 to 2021 (includes periodic detainees²)

Year	Homicide	Acts intend. injury	Sexual assault	Dangerous / negligent acts	Abduction etc	Robbery etc	Unlawful entry	Theft etc	Fraud etc	Illicit drug	Weapons etc	Property damage etc	Public order	Traffic and vehicle etc	Justice procedures etc	Miscellaneous
1982	423	231	289	224	22	661	577	443	165	384	14	48	23	130	72	13
1983	362	237	270	150	23	686	664	484	177	391	12	45	19	127	70	16
1984	361	231	204	123	26	646	545	425	148	388	8	36	35	111	57	10
1985	439	239	218	152	34	786	715	423	185	597	12	55	28	122	92	18
1986	429	201	287	146	31	807	693	464	190	670	13	41	18	127	95	17
1987	437	313	300	173	35	711	686	594	224	731	18	58	19	148	86	18
1988	480	377	294	163	38	728	737	604	227	697	25	54	37	119	94	17
1989	477	532	323	169	11	693	864	733	223	723	36	40	58	120	186	94
1990	519	594	466	124	44	746	968	791	274	800	39	66	149	452	232	103
1991	571	684	532	155	58	823	1091	864	333	861	29	85	130	471	316	100
1992	573	711	598	126	48	935	1017	864	371	1013	42	83	136	490	372	106
1993	575	770	678	103	40	1016	1010	766	352	1191	53	80	132	418	337	111
1994	579	801	745	105	38	1075	990	750	378	1203	45	76	117	321	380	108
1995	592	868	743	88	49	1029	942	740	379	1142	28	107	120	377	432	113
1996	633	937	712	106	43	1020	968	748	351	1016	30	70	117	407	426	107
1997	625	1009	701	103	48	1043	972	788	413	1015	24	90	137	424	447	118
1998	659	1031	756	92	57	1073	804	704	394	822	30	64	132	339	743	124
1999	695	1028	732	112	51	1175	871	731	369	862	46	69	138	420	957	177
2000	756	1020	716	111	58	1220	821	692	388	945	50	47	136	506	877	206
2001	801	1192	640	141	64	1346	949	703	327	948	37	65	155	513	789	176
2002	813	1222	585	141	93	1331	848	648	313	942	42	64	156	528	888	145
2003	844	1449	638	126	92	1213	937	625	290	950	67	58	154	566	727	145
2004	861	1473	647	132	106	1164	1046	617	293	1072	101	76	129	565	888	159
2005	876	1685	731	125	103	1110	1029	622	347	1152	126	60	145	664	937	148
2006	881	1587	754	115	130	1069	1012	629	336	1107	97	76	134	698	1056	173
2007	907	1921	819	109	131	1062	993	629	366	1142	102	84	146	653	1131	123
2008	929	1894	934	143	121	1163	941	450	337	1459	123	98	113	655	1100	89
2009	868	2173	983	187	139	1126	1064	515	339	1571	152	99	129	638	1150	27
2010	918	2071	998	187	144	1182	1046	506	313	1617	130	92	114	580	1065	21
2011	920	1777	978	202	142	1104	935	385	254	1546	118	105	93	322	1148	35
2012	870	1683	966	222	156	1063	875	410	233	1486	130	102	79	312	1049	30
2013	855	1875	1011	227	176	1031	883	418	222	1576	144	86	88	253	1035	48
2014	877	2035	1105	216	174	1012	959	403	224	1646	159	103	107	318	1193	54
2015	915	2489	1279	275	201	1046	1013	384	282	1905	226	92	97	355	1190	46
2016	928	2653	1475	298	213	993	1019	433	347	2138	234	124	110	328	1280	58
2017	906	2908	1627	349	203	885	1016	451	354	2335	242	100	108	340	1293	39
2018	923	3084	1814	381	194	892	1055	509	370	2364	296	141	121	275	1262	45
2019	977	3190	1990	369	192	792	940	416	338	2125	289	98	83	162	1462	35
2020	990	3099	2108	314	215	707	774	311	288	1987	274	101	50	99	1374	40
2021	994	3469	2210	347	219	674	686	304	293	2009	281	92	50	157	1297	44

1. Series is based on ANZSOC 2011. Data for years prior to 1989 are unable to re-classified to ANZSOC 2011 and are mapped to ASOC Division 1997). Coding of Miscellaneous offences was revised in 2012 and previous year results have been amended. See explanatory notes (j) and (k).

2. Periodic detainees are no longer shown from 2019 onwards.

Figure 5: Trends in the security classification of convicted inmates (excl. periodic detention) as at 30 June each year

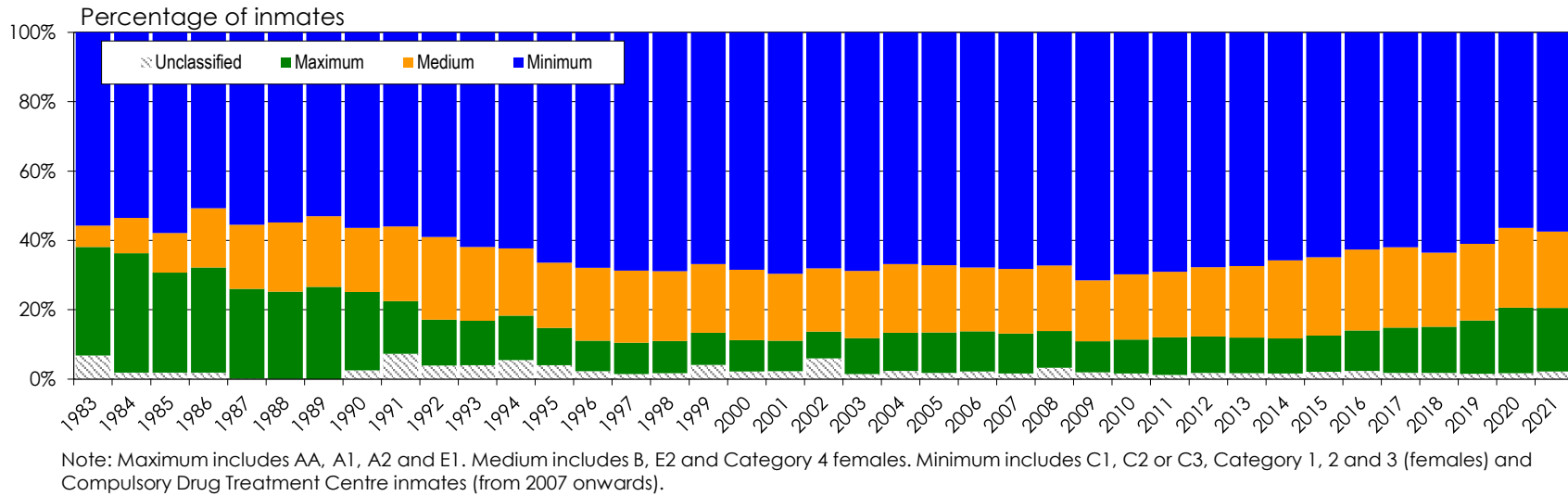
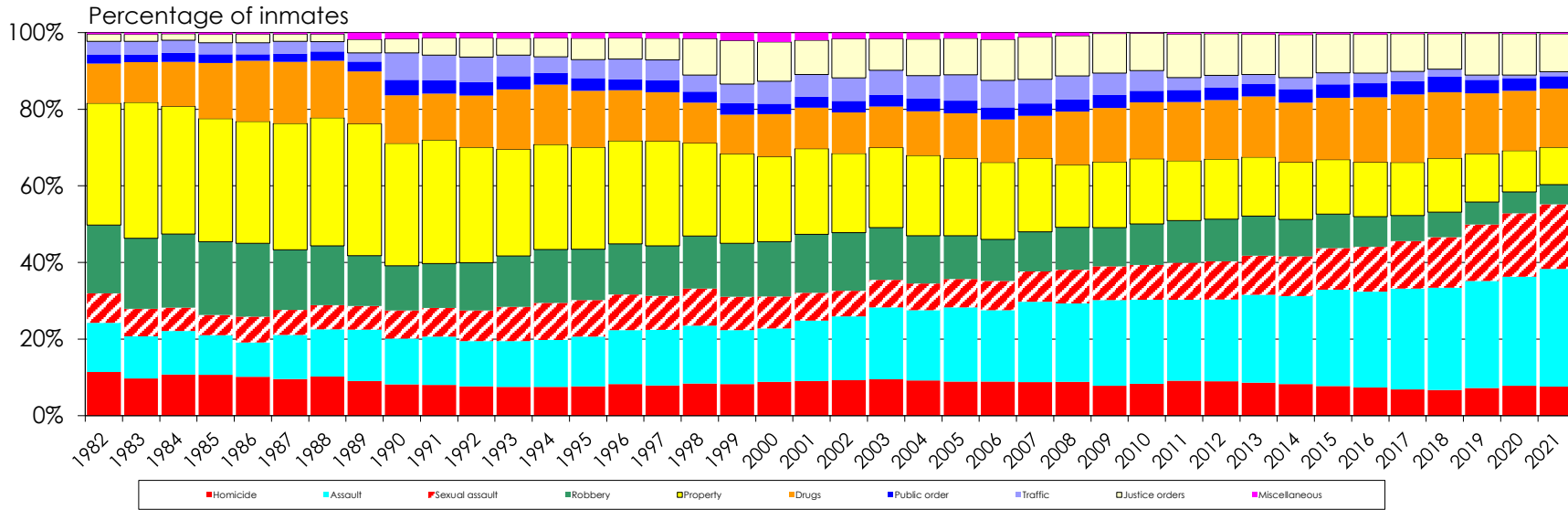


Figure 6: Trends in most serious offence¹ (includes periodic detention²) as at 30 June each year



1. Categories are based on ANZSOC 2011 and have been collapsed for presentation purposes (see Appendix 2).
 2. Periodic detainees are no longer shown from 2019 onwards.

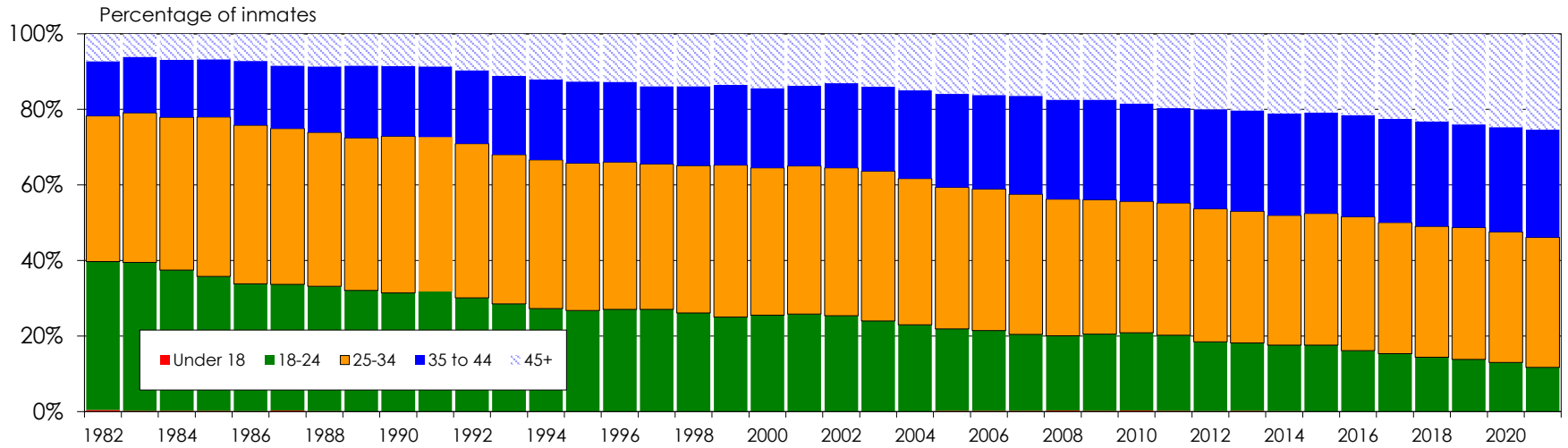
**Table 4.9 Trends in the age profile of inmates as at 30 June;
1982 to 2021 (includes periodic detainees ²)**

Year	Under 18 ¹		18 to 24 years		25 to 34 years		35 to 44 years		45 years +	
	Number	%	Number	%	Number	%	Number	%	Number	%
1982	15	0.4%	1463	39.3%	1434	38.6%	538	14.5%	269	7.2%
1983	9	0.2%	1466	39.3%	1477	39.6%	553	14.8%	228	6.1%
1984	6	0.2%	1251	37.3%	1356	40.4%	510	15.2%	231	6.9%
1985	9	0.2%	1464	35.6%	1736	42.2%	629	15.3%	277	6.7%
1986	7	0.2%	1424	33.7%	1776	42.0%	720	17.0%	302	7.1%
1987	13	0.3%	1521	33.4%	1876	41.2%	759	16.7%	382	8.4%
1988	5	0.1%	1551	33.1%	1912	40.8%	820	17.5%	403	8.6%
1989	5	0.1%	1689	32.0%	2135	40.4%	1010	19.1%	443	8.4%
1990	6	0.1%	1996	31.3%	2639	41.4%	1181	18.5%	545	8.6%
1991	--	--	2269	31.9%	2892	40.7%	1328	18.7%	614	8.6%
1992	--	--	2253	30.1%	3056	40.8%	1452	19.4%	724	9.7%
1993	--	--	2174	28.5%	3018	39.5%	1593	20.9%	847	11.1%
1994	1	0.0%	2102	27.3%	3035	39.4%	1644	21.3%	929	12.0%
1995	1	0.0%	2072	26.7%	3023	39.0%	1673	21.6%	980	12.6%
1996	1	0.0%	2081	27.1%	2999	39.0%	1633	21.2%	977	12.7%
1997	--	--	2153	27.1%	3061	38.5%	1641	20.6%	1102	13.8%
1998	--	--	2042	26.1%	3051	39.0%	1644	21.0%	1087	13.9%
1999	2	0.0%	2110	25.0%	3389	40.2%	1792	21.2%	1140	13.5%
2000	1	0.0%	2180	25.5%	3333	39.0%	1807	21.1%	1228	14.4%
2001	--	--	2286	25.8%	3464	39.2%	1882	21.3%	1214	13.7%
2002	--	--	2222	25.4%	3428	39.1%	1962	22.4%	1147	13.1%
2003	1	0.0%	2130	24.0%	3519	39.6%	1986	22.4%	1245	14.0%
2004	--	--	2143	23.0%	3615	38.8%	2178	23.3%	1393	14.9%
2005	23	0.2%	2135	21.7%	3694	37.5%	2439	24.7%	1569	15.9%
2006	21	0.2%	2093	21.2%	3690	37.4%	2457	24.9%	1593	16.2%
2007	22	0.2%	2088	20.2%	3824	37.1%	2688	26.1%	1696	16.4%
2008	28	0.3%	2086	19.8%	3819	36.2%	2779	26.3%	1837	17.4%
2009	21	0.2%	2266	20.3%	3969	35.6%	2956	26.5%	1948	17.5%
2010	29	0.3%	2265	20.6%	3822	34.8%	2840	25.9%	2028	18.5%
2011	21	0.2%	2013	20.0%	3523	35.0%	2530	25.1%	1977	19.6%
2012	15	0.2%	1769	18.3%	3402	35.2%	2550	26.4%	1930	20.0%
2013	21	0.2%	1781	17.9%	3460	34.9%	2655	26.7%	2011	20.3%
2014	14	0.1%	1846	17.4%	3641	34.4%	2852	26.9%	2232	21.1%
2015	--	--	2076	17.6%	4114	34.9%	3145	26.7%	2460	20.9%
2016	--	--	2037	16.1%	4476	35.4%	3392	26.9%	2726	21.6%
2017	--	--	2014	15.3%	4575	34.8%	3608	27.4%	2959	22.5%
2018	--	--	1974	14.4%	4760	34.7%	3806	27.7%	3186	23.2%
2019	--	--	1857	13.8%	4702	34.9%	3670	27.3%	3229	24.0%
2020	--	--	1654	13.0%	4405	34.6%	3525	27.7%	3147	24.7%
2021	--	--	1537	11.7%	4521	34.4%	3741	28.5%	3327	25.3%

1. Corrective Services NSW took management of Kariang Juvenile Correctional Centre between December 2004 and May 2015, accounting for the increase in the number of inmates in this age category over that period.

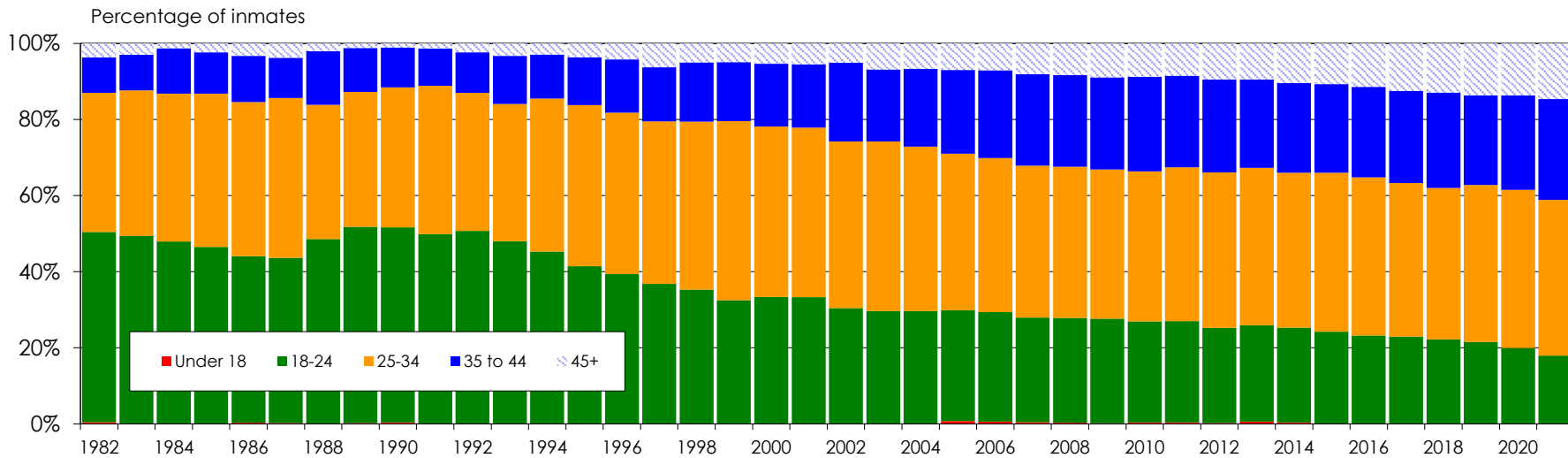
2. Periodic detainees are no longer shown from 2019 onwards.

Figure 7: Trends in the age profile of inmates (includes periodic detention) as at 30 June each year



Periodic detainees are no longer shown from 2019 onwards.

Figure 8: Trends in age profile of Aboriginal/TSI inmates (includes periodic detention) as at 30 June each year



Periodic detainees are no longer shown from 2019 onwards.

APPENDICES

APPENDIX 1

Australian and New Zealand Standard Offence Classification (ANZSOC), 2011

source: Australian Bureau of Statistics Catalogue No: 1234.0, ABS

Division	Subdivision	Group
1	Homicide and related offences	
11	Murder	111 Murder
12	Attempted murder	121 Attempted murder
13	Manslaughter and driving causing death	131 Manslaughter 132 Driving causing death
2	Acts intended to cause injury	
21	Assault	211 Aggravated assault 212 Non-aggravated assault 213 Common assault
29	Other acts intended to cause injury	291 Stalking 299 Other acts intended to cause injury, nec
3	Sexual assault and related offences	
31	Sexual assault	311 Aggravated sexual assault 312 Non-aggravated sexual assault
32	Non-assaultive sexual offences	321 Non-assaultive sexual offences against a child 322 Child pornography offences 323 Sexual servitude offences 329 Non-assaultive sexual offences, nec
4	Dangerous or negligent acts endangering persons	
41	Dangerous or negligent operation of a vehicle	411 Driving under the influence of alcohol or other substance 412 Dangerous or negligent operation (driving) of a vehicle
49	Other dangerous or negligent acts endangering persons	491 Neglect or ill-treatment of persons under care 499 Other dangerous or negligent acts endangering persons, nec
5	Abduction, harassment and other offences against the person	
51	Abduction and kidnapping	511 Abduction and kidnapping
52	Deprivation of liberty/false imprisonment	521 Deprivation of liberty/false imprisonment
53	Harassment and threatening behaviour	531 Harassment and private nuisance 532 Threatening behaviour
6	Robbery, extortion and related offences	
61	Robbery	611 Aggravated robbery 612 Non-aggravated robbery
62	Blackmail and extortion	621 Blackmail and extortion
7	Unlawful entry with intent/burglary, break and enter	
71	Unlawful entry with intent/burglary, break and enter	711 Unlawful entry with intent/burglary, break and enter

APPENDIX 1

Australian and New Zealand Standard Offence Classification (ANZSOC), 2011

source: Australian Bureau of Statistics Catalogue No: 1234.0, ABS

Division	Subdivision	Group
8	Theft and related offences	
	81 Motor vehicle theft and related offences	811 Theft of a motor vehicle 812 Illegal use of a motor vehicle 813 Theft of motor vehicle parts or contents
	82 Theft (except motor vehicles)	821 Theft from a person (excluding by force) 822 Theft of intellectual property 823 Theft from retail premises 829 Theft (except motor vehicles), nec
	83 Receive or handle proceeds of crime	831 Receive or handle proceeds of crime
	84 Illegal use of property (except motor vehicles)	841 Illegal use of property (except motor vehicles)
9	Fraud, deception and related offences	
	91 Obtain benefit by deception	911 Obtain benefit by deception
	92 Forgery and counterfeiting	921 Counterfeiting of currency 922 Forgery of documents 923 Possess equipment to make false/illegal instrument
	93 Deceptive business/government practices	931 Fraudulent trade practices 932 Misrepresentation of professional status 933 Illegal non-fraudulent trade practices
	99 Other fraud and deception offences	991 Dishonest conversion 999 Other fraud and deception offences, nec
10	Illicit drug offences	
	101 Import or export illicit drugs	1011 Import illicit drugs 1012 Export illicit drugs
	102 Deal or traffic in illicit drugs	1021 Deal or traffic in illicit drugs - commercial quantity 1022 Deal or traffic in illicit drugs - non-commercial quantity
	103 Manufacture or cultivate illicit drugs	1031 Manufacture illicit drugs 1032 Cultivate illicit drugs
	104 Possess and/or use illicit drugs	1041 Possess illicit drugs 1042 Use illicit drugs
	109 Other illicit drug offences	1099 Other illicit drug offences, nec
11	Prohibited and regulated weapons and explosives offences	
	111 Prohibited weapons/explosives offences	1111 Import or export prohibited weapons/explosives 1112 Sell, possess and/or use prohibited weapons/explosives 1119 Prohibited weapons/explosives offences, nec

APPENDIX 1

Australian and New Zealand Standard Offence Classification (ANZSOC), 2011

source: Australian Bureau of Statistics Catalogue No: 1234.0, ABS

Division	Subdivision	Group
11	Prohibited and regulated weapons and explosives offences	
	112	Regulated weapons/explosives offences
	1121	Unlawfully obtain or possess regulated weapons/explosives
	1122	Misuse of regulated weapons/explosives
	1123	Deal or traffic regulated weapons/explosives offences
	1129	Regulated weapons/explosives offences, nec
12	Property damage and environmental pollution	
	121	Property damage
	1211	Property damage by fire or explosion
	1212	Graffiti
	1219	Property damage, nec
	122	Environmental pollution
	1221	Air pollution offences
	1222	Water pollution offences
	1223	Noise pollution offences
	1224	Soil pollution offences
	1229	Environmental pollution, nec
13	Public order offences	
	131	Disorderly conduct
	1311	Trespass
	1312	Criminal intent
	1313	Riot and affray
	1319	Disorderly conduct, nec
	132	Regulated public order offences
	1321	Betting and gambling offences
	1322	Liquor and tobacco offences
	1323	Censorship offences
	1324	Prostitution offences
	1325	Offences against public order sexual standards
	1326	Consumption of legal substances in regulated spaces
	1329	Regulated public order offences, nec
	133	Offensive conduct
	1331	Offensive language
	1332	Offensive behaviour
	1333	Vilify or incite hatred on racial, cultural, religious or ethnic grounds
	1334	Cruelty to animals
14	Traffic and vehicle regulatory offences	
	141	Driver Licence offences
	1411	Drive while licence disqualified or suspended
	1412	Drive without a licence
	1419	Driver licence offences, nec
	142	Vehicle registration and roadworthiness offences
	1421	Registration offences
	1422	Roadworthiness offences
	143	Regulatory driving offences
	1431	Exceed the prescribed content of alcohol or other substance limit
	1432	Exceed the legal speed limit
	1433	Parking offences
	1439	Regulatory driving offences, nec
	144	Pedestrian offences
	1441	Pedestrian offences

APPENDIX 1

Australian and New Zealand Standard Offence Classification (ANZSOC), 2011

source: Australian Bureau of Statistics Catalogue No: 1234.0, ABS

Division	Subdivision	Group
15	Offences against justice procedures, government security, and government operations	
151	Breach of custodial order offences	
	1511	Escape custody offences
	1512	Breach of home detention
	1513	Breach of suspended sentence
152	Breach of community-based orders	
	1521	Breach of community service order
	1522	Breach of parole
	1523	Breach of bail
	1524	Breach of bond - probation
	1525	Breach of bond - other
	1529	Breach of community-based order, nec
153	Breach of violence and non-violence orders	
	1531	Breach of violence order
	1532	Breach of non-violence order
154	Offences against government operations	
	1541	Resist or hinder govt. official (exc. police, justice officl. or govt. security officer)
	1542	Bribery involving government officials
	1543	Immigration offences
	1549	Offences against government operations, nec
155	Offences against government security	
	1551	Resist or hinder government officer concerned with government security
	1559	Offences against government security, nec
156	Offences against justice procedures	
	1561	Subvert the course of justice
	1562	Resist or hinder police officer or justice official
	1563	Prison regulation offences
	1569	Offences against justice procedures, nec
16	Miscellaneous offences	
161	Defamation, libel and privacy offences	
	1611	Defamation and libel
	1612	Offences against privacy
162	Public health and safety offences	
	1621	Sanitation offences
	1622	Disease prevention offences
	1623	Occupational health and safety offences
	1624	Transport regulation offences
	1625	Dangerous substances offences
	1626	Licit drug offences
	1629	Public health and safety offences, nec
163	Commercial/industry/financial regulation	
	1631	Commercial/industry/financial regulation
169	Other miscellaneous offences	
	1691	Environmental regulation offences
	1692	Bribery excluding government officials
	1693	Quarantine offences
	1694	Import/export regulations
	1695	Procure or commit illegal abortion
	1699	Other miscellaneous offences, nec

APPENDIX 2

Offence grouping for trends

Category of most serious offence (trends)
ASOC Division

Homicide

Homicide and related offences

Assault

Acts intended to cause injury

Dangerous or negligent acts endangering persons

Abduction, harassment and other offences against the person

Sexual assault

Sexual assault and related offences

Robbery

Robbery, extortion and related offences

Property

Unlawful entry with intent/burglary, break and enter

Theft and related offences

Fraud, deception and related offences

Drugs

Illicit drug offences

Public Order

Prohibited and regulated weapons and explosives offences

Property damage and environmental pollution

Public order offences

Traffic

Traffic and vehicle regulatory offences

Justice order

Offences against justice procedures, government security, and government operations

Miscellaneous

Miscellaneous offences



Corrections Research Evaluation & Statistics
Delivery, Performance and Culture
Corrective Services NSW
GPO Box 31
Sydney NSW Australia

Telephone (02) 8346 1556

Email: research.enquiries@justice.nsw.gov.au

Material published by
Corrections Research Evaluation & Statistics includes

Research Publications
Research Bulletins
Research Digests
Statistical Publications