



Statistical Publication

Inmate Census 1996: Summary of Characteristics

Simon Eyland

**Statistical Publication No.14
October 1996
ISSN 0814 1215**

NSW Department of Corrective Services

NSW INMATE CENSUS 1996

SUMMARY OF CHARACTERISTICS

Simon Eyland
Chief Research Officer

October, 1996

Research Statistical No. 14
ISSN 0814 1215

© NSW Department of Corrective Services

Research and Statistics Unit,
NSW Department of Corrective Services,
Level 11, 24 Campbell Street,
SYDNEY NSW 2000

Telephone: (02) 9289 - 1553

Facsimile: (02) 9289 - 1590

Table of Contents

Explanatory Notes	i
All Inmates - (Includes Periodic Detention)	1
Full-time Custody Inmates	12
Periodic Detainees	22
Sentenced Inmates	32
Appendix	41

Explanatory Notes

General Information

1. This interim publication contains summary statistics of inmates held in custody in gazetted correctional centres in New South Wales at midnight on the 30th June 1996. Those inmates sentenced to periodic detention were included in the census data only they were under detention on the weekend of Sunday 30th June 1996. Prisoners on the Work Release II programme (under which they live at home and work at prison) were also included.

2. A New South Wales Inmate Census was conducted as part of the First National Australian Prison Census for the 30th June 1982. The proposal for a National Prison Census first emerged at a Correctional Administrators meeting in Melbourne in September 1980 as an offshoot from a review of correctional statistics. Preliminary technical discussions were held in December 1980 and a formal proposal went to the Ministers Conference held in New Zealand in April/May 1981. The Ministers discussed the proposed census at some length and finally agreed the conduct of the first Australian National Prison Census and that an Inmate census should continue to be conducted annually.

Concept of an Episode of Imprisonment

3. The statistics relate to inmates held in custody on 30 June 1996, in respect of their "current episode" of imprisonment. Basically, an episode is a continuous period in a Correctional Centre.

In distinguishing between the current and any previous episode of imprisonment the following rules were applied:

- a: *An episode was regarded as terminated by:*
 - i. release of the inmate to freedom, including release on parole or licence where the person had not returned to a Correctional Centre in breach of parole or licence by the census date;
 - ii. release to a court or the police where the person is subsequently freed without having been returned to a Correctional Centre;
 - iii. release on bail, or a bond, or to immigration authorities;
 - iv. transfer to an institution other than a Correctional Centre (e.g. a psychiatric hospital); and
 - v. escape from a Correctional Centre, where the person had not been returned to prison by the census date.

- b: *An episode was not regarded as terminated by:*
- i. a transfer between Correctional Centre;
 - ii. release to a court or to police where the inmate is returned to a Correctional Centre within a day or so for the same offence(s);
 - iii. change in the inmates legal status e.g. when a remand inmate is sentenced, or when a sentenced inmate appeals against his conviction or sentence;
 - iv. escape from a Correctional Centre when the inmate had been returned to a Correctional Centre by the census date; or
 - v. release on parole or licence where the inmate had been returned to a Correctional Centre in breach of parole or licence by the census date.

Legal Status

4. For the purpose of this report, prisoners have been classified to the following seven legal status categories:

- i. Unconvicted (awaiting court hearing/trial/extradition)
- ii. Convicted but awaiting sentence
- iii. Awaiting deportation
- iv. Awaiting result of appeal against conviction or sentence
- v. Under sentence - no appeal
- vi. Detained as a Forensic patient
- vii. Civil prisoner

Classification of Offences

5. For the National Prison Census, the offences for which prisoners were held at 30th June 1996 were classified according to the Draft Australian National Classification of Offences (DANCO). In the present report, however, offences have been classified according to the Second Revision of the New South Wales Classification of Offences and of Care and Protection Orders for Children. This classification was developed by the NSW office of ABS in collaboration with State authorities and has been used in NSW Correctional Centres and courts statistics since 1973.

6. As a general rule, a legal charge of attempting, conspiring, or inciting to commit a crime, or aiding in the commission of, or participating as an accessory before the fact, to a crime, is classified to the offence category to which the crime so attempted, etc. is assigned. All cases of accessory after the fact to a crime are assigned to the category "Accessory after the fact". While the Classification has, of necessity, been abbreviated in the tables that follow, it is reproduced in full as an Appendix of this publication.

Determination of Most Serious Offence

7. Although an inmate may be held in a correctional centre for a number of different offences, only the most serious offence in current prison episode was recorded in these statistics. This was basically the offence for which the longest sentence was passed for a single count, ignoring undecided appeals. Where no sentence had been passed at 30 June 1996, or two different offences had equal sentences, the offence with the lowest (NSW) offence code number was chosen.

Type of Sentence

8. This item relates to the aggregate sentence imposed (see below). The category "Indefinite" refers to all aggregate sentences where a maximum term is specified and a minimum term or non-parole period is also set.

Level of Court

9. This item represents the level of court of sentence, or of most recent remand in custody, for the most serious offence (see above). Appeal courts were recorded only where such courts have altered the length of sentence appropriate to the most serious offence.

Aggregate Sentence Imposed

10. This item represents the longest periods that a person may be detained under sentence in the current episode. In the terminology used by the NSW Sentencing Act (1989) an aggregate sentence is equivalent to the aggregate minimum term added to any aggregate additional term. Charges pending that are likely to extend the current episode are ignored. Cumulative sentences are taken as equal to their united length. Concurrent sentences are taken as equal to one of them, or to the longer if they are of unequal length. Where sentences 'overlap', i.e. parts of the sentences are concurrent, the concurrent periods are counted only once. In the case of the prisoners serving the balance of a sentence after the revocation of parole or licence, the whole of the original sentence imposed was included rather than just the balance of the sentence.

Sentence Served

11. 'Sentence Served' relates to inmates who have had a sentence passed, and has been calculated as the period elapsed between the date (aggregate) sentence commenced and 30 June 1996. Note that, for inmates with parole or licence revoked or recaptured escapees, the 'sentence served' as calculated for these statistics would include the time spent outside prison between release or escape and return, and thus overstate the actual time served towards the sentence.

ALL INMATES

SOURCE : N.S.W. PRISON CENSUS 30 JUNE 1996
 ALL INMATES - includes Periodic Detention

	SEX OF PRISONER				TOTAL	
	Males		Females			
MARITAL STATUS						
Never Married	3676	50.7%	161	36.8%	3837	49.9%
Married/De-facto	2459	33.9%	194	44.3%	2653	34.5%
Separated	368	5.1%	33	7.5%	401	5.2%
Divorced	434	6.0%	28	6.4%	462	6.0%
Widowed	63	.9%	14	3.2%	77	1.0%
Unknown	253	3.5%	8	1.8%	261	3.4%
TOTAL	7253	100.0%	438	100.0%	7691	100.0%
ABORIGINALITY						
Aboriginal/TSI	878	12.1%	74	16.9%	952	12.4%
Not Aboriginal	6238	86.0%	360	82.2%	6598	85.8%
Unknown	137	1.9%	4	.9%	141	1.8%
TOTAL	7253	100.0%	438	100.0%	7691	100.0%
KNOWN PRIOR IMPRISONMENT						
Yes	3618	49.9%	195	44.5%	3813	49.6%
No	3280	45.2%	223	50.9%	3503	45.5%
Unknown	355	4.9%	20	4.6%	375	4.9%
TOTAL	7253	100.0%	438	100.0%	7691	100.0%
CLASSIFICATION						
PDC/Other	1436	19.8%	120	27.4%	1556	20.2%
A1	10	.1%			10	.1%
A2	412	5.7%	4	.9%	416	5.4%
B	775	10.7%	39	8.9%	814	10.6%
C1	914	12.6%	34	7.8%	948	12.3%
C2	2052	28.3%	127	29.0%	2179	28.3%
C3	539	7.4%	43	9.8%	582	7.6%
E1	56	.8%			56	.7%
E2	321	4.4%	16	3.7%	337	4.4%
Remand/Trial	738	10.2%	55	12.6%	793	10.3%
TOTAL	7253	100.0%	438	100.0%	7691	100.0%
STATE OF COURT						
New South Wales	7136	98.4%	432	98.6%	7568	98.4%
Victoria	9	.1%	1	.2%	10	.1%
Queensland	9	.1%	1	.2%	10	.1%
South Australia	3	.0%			3	.0%
Western Australia	3	.0%			3	.0%
Tasmania	2	.0%			2	.0%
Aust. Capital Territory	91	1.3%	4	.9%	95	1.2%
TOTAL	7253	100.0%	438	100.0%	7691	100.0%

RESEARCH & STATISTICS
 N.S.W. DEPT OF CORRECTIVE SERVICES

SOURCE : N.S.W. PRISON CENSUS 30 JUNE 1996
 ALL INMATES - includes Periodic Detention

	SEX OF PRISONER				TOTAL	
	Males		Females			
AGE AT CENSUS DATE						
17			1	.2%	1	.0%
18	66	.9%	7	1.6%	73	.9%
19	238	3.3%	10	2.3%	248	3.2%
20	300	4.1%	17	3.9%	317	4.1%
21-22	637	8.8%	31	7.1%	668	8.7%
23-24	735	10.1%	40	9.1%	775	10.1%
25-29	1583	21.8%	99	22.6%	1682	21.9%
30-34	1241	17.1%	76	17.4%	1317	17.1%
35-39	923	12.7%	66	15.1%	989	12.9%
40-44	616	8.5%	28	6.4%	644	8.4%
45-49	415	5.7%	26	5.9%	441	5.7%
50-54	216	3.0%	15	3.4%	231	3.0%
55-59	148	2.0%	10	2.3%	158	2.1%
60-64	76	1.0%	7	1.6%	83	1.1%
65+	59	.8%	5	1.1%	64	.8%
TOTAL	7253	100.0%	438	100.0%	7691	100.0%
MOST SERIOUS OFFENCE						
Murder	380	5.2%	20	4.6%	400	5.2%
Attempt Murder	73	1.0%	4	.9%	77	1.0%
Conspiracy to Murder	4	.1%	3	.7%	7	.1%
Manslaughter	90	1.2%	17	3.9%	107	1.4%
Major Assault	631	8.7%	20	4.6%	651	8.5%
Other Assault	366	5.0%	12	2.7%	378	4.9%
Rape	6	.1%			6	.1%
Serious Sexual Assault	421	5.8%	3	.7%	424	5.5%
Incest/Carnal Knowledge	122	1.7%			122	1.6%
Indecent Assault	108	1.5%			108	1.4%
Buggery/Bestial	60	.8%	1	.2%	61	.8%
Robbery Major Assault	673	9.3%	18	4.1%	691	9.0%
Other Robbery	321	4.4%	17	3.9%	338	4.4%
Fraud	290	4.0%	76	17.4%	366	4.8%
Break Enter and Steal	955	13.2%	51	11.6%	1006	13.1%
Other Steal	762	10.5%	65	14.8%	827	10.8%
Driving/Traffic	510	7.0%	14	3.2%	524	6.8%
Offences against Order	398	5.5%	24	5.5%	422	5.5%
Drug Offences	970	13.4%	85	19.4%	1055	13.7%
Other Offences	113	1.6%	8	1.8%	121	1.6%
TOTAL	7253	100.0%	438	100.0%	7691	100.0%

RESEARCH & STATISTICS
 N.S.W. DEPT OF CORRECTIVE SERVICES

SOURCE : N.S.W. PRISON CENSUS 30 JUNE 1996
 ALL INMATES - includes Periodic Detention

	SEX OF PRISONER				TOTAL	
	Males		Females			
LEVEL OF COURT						
Supreme	651	9.0%	43	9.8%	694	9.0%
District	3686	50.8%	185	42.2%	3871	50.3%
Local	2820	38.9%	205	46.8%	3025	39.3%
Childrens	7	.1%			7	.1%
Federal/Other	89	1.2%	5	1.1%	94	1.2%
TOTAL	7253	100.0%	438	100.0%	7691	100.0%
AGGREGATE SENTENCE						
Unsentenced	748	10.3%	56	12.8%	804	10.5%
1 - 7 days	12	.2%	2	.5%	14	.2%
8 days < 1 month	71	1.0%	10	2.3%	81	1.1%
1 month < 3 months	83	1.1%	10	2.3%	93	1.2%
3 months < 6 months	327	4.5%	30	6.8%	357	4.6%
6 months < 9 months	441	6.1%	34	7.8%	475	6.2%
9 months < 1 year	361	5.0%	22	5.0%	383	5.0%
1 year < 2 years	712	9.8%	46	10.5%	758	9.9%
2 years < 5 years	1302	18.0%	64	14.6%	1366	17.8%
5 years < 7 years	631	8.7%	26	5.9%	657	8.5%
7 years < 10 years	541	7.5%	17	3.9%	558	7.3%
10 years < 15 years	290	4.0%	10	2.3%	300	3.9%
15 years < 20 years	122	1.7%	7	1.6%	129	1.7%
20 years+	136	1.9%	1	.2%	137	1.8%
Life	104	1.4%	2	.5%	106	1.4%
Forensic Patient	48	.7%	1	.2%	49	.6%
Periodic Detention	1324	18.3%	100	22.8%	1424	18.5%
TOTAL	7253	100.0%	438	100.0%	7691	100.0%
IS ANY OFFENCE FEDERAL?						
Yes	312	4.3%	32	7.3%	344	4.5%
No	6941	95.7%	406	92.7%	7347	95.5%
TOTAL	7253	100.0%	438	100.0%	7691	100.0%
IS THE MSO FEDERAL?						
Yes	255	3.5%	29	6.6%	284	3.7%
No	6998	96.5%	409	93.4%	7407	96.3%
TOTAL	7253	100.0%	438	100.0%	7691	100.0%

RESEARCH & STATISTICS
 N.S.W. DEPT OF CORRECTIVE SERVICES

SOURCE : N.S.W. PRISON CENSUS 30 JUNE 1996
 ALL PRISONERS - includes Periodic Detention

	SEX OF PRISONER				TOTAL	
	Males		Females			
CENTRE SECURITY RATING						
Maximum Security						
Goulburn (Main) C.C.	384	5.3%			384	5.0%
Maitland C.C.	118	1.6%			118	1.5%
Special Purpose Centre	45	.6%	2	.5%	47	.6%
Malabar Hospital	107	1.5%			107	1.4%
Reception & Induction	238	3.3%			238	3.1%
Special Care Centre	41	.6%			41	.5%
Remand Centre	347	4.8%			347	4.5%
Lithgow C.C.	270	3.7%			270	3.5%
Medium Security						
Bathurst (Main) C.C.	223	3.1%			223	2.9%
Broken Hill C.C.	37	.5%			37	.5%
Cooma C.C.	158	2.2%			158	2.1%
Grafton (Main) C.C.	128	1.8%	7	1.6%	135	1.8%
Mulawa C.C.			197	45.0%	197	2.6%
Parramatta C.C.	411	5.7%			411	5.3%
Parklea C.C.	295	4.1%			295	3.8%
Junee (Medium) C.C.	243	3.4%			243	3.2%
Tamworth C.C.	30	.4%			30	.4%
Minimum Security						
Berrima C.C.	65	.9%			65	.8%
Emu Plains C.C.			104	23.7%	104	1.4%
Norma Parker Centre			28	6.4%	28	.4%
Silverwater C.C.	335	4.6%			335	4.4%
Goulburn X Wing	93	1.3%			93	1.2%
Bathurst X Wing	93	1.3%			93	1.2%
Grafton C Units	117	1.6%			117	1.5%
Junee (Minimum) C.C.	344	4.7%			344	4.5%
Training Centre	372	5.1%			372	4.8%
St Heliers C.C.	229	3.2%			229	3.0%
Glen Innes C.C.	114	1.6%			114	1.5%
Mannus C.C.	123	1.7%			123	1.6%
Oberon C.C.	95	1.3%			95	1.2%
Kirkconnell C.C.	191	2.6%			191	2.5%
John Morony C.C.	235	3.2%			235	3.1%
Cessnock C.C.	420	5.8%			420	5.5%
Periodic Detention						
Campbelltown P.D.C.	116	1.6%			116	1.5%
Grafton P.D.C.	50	.7%			50	.7%
Malabar P.D.C.	169	2.3%			169	2.2%
Malabar Mid Wk P.D.C.	74	1.0%			74	1.0%

RESEARCH & STATISTICS
 N.S.W. DEPT OF CORRECTIVE SERVICES

SOURCE : N.S.W. PRISON CENSUS 30 JUNE 1996
 ALL PRISONERS - includes Periodic Detention

	SEX OF PRISONER		TOTAL	
	Males	Females		
Parramatta P.D.C.	89	1.2%	89	1.2%
St Heliers P.D.C.	28	.4%	28	.4%
Silverwater P.D.C.	222	3.1%	222	2.9%
Silverwater MidWeek P.D.C.	175	2.4%	175	2.3%
Tomago P.D.C.	149	2.1%	149	1.9%
Windsor P.D.C.	111	1.5%	111	1.4%
Wollongong P.D.C.	106	1.5%	106	1.4%
Mannus P.D.C.	35	.5%	4	.9%
Emu Plains P.D.C.			96	21.9%
Fines Centre	28	.4%	28	.4%
TOTAL	7253	100.0%	438	100.0%
			7691	100.0%

RESEARCH & STATISTICS
 N.S.W. DEPT OF CORRECTIVE SERVICES

SOURCE : N.S.W. PRISON CENSUS 30 JUNE 1996
 ALL INMATES - includes Periodic Detention

	SEX OF PRISONER				TOTAL	
	Males		Females			
LEGAL STATUS						
Sentenced No Appeal	5985	82.5%	340	77.6%	6325	82.2%
Appellant	472	6.5%	41	9.4%	513	6.7%
Forensic Patient	48	.7%	1	.2%	49	.6%
Remand/Trial	744	10.3%	56	12.8%	800	10.4%
Awaiting Deportation	3	.0%			3	.0%
Civil Prisoner	1	.0%			1	.0%
TOTAL	7253	100.0%	438	100.0%	7691	100.0%
IS PRISONER IN FOR BOP?						
No Breach	6434	88.7%	401	91.6%	6835	88.9%
Breach of Parole	511	7.0%	24	5.5%	535	7.0%
Breach of licence	1	.0%			1	.0%
Escapee	157	2.2%	10	2.3%	167	2.2%
BOP and Escape	147	2.0%	2	.5%	149	1.9%
BOL and Escape	1	.0%			1	.0%
Combination BOP/BOL/Esc	2	.0%	1	.2%	3	.0%
TOTAL	7253	100.0%	438	100.0%	7691	100.0%
TYPE OF SENTENCE						
Not under sentence	748	10.3%	56	12.8%	804	10.5%
Life	104	1.4%	2	.5%	106	1.4%
Forensic Patient	48	.7%	1	.2%	49	.6%
Minimum & Additional	3744	51.6%	177	40.4%	3921	51.0%
Fixed Term	1203	16.6%	89	20.3%	1292	16.8%
Fine Default	82	1.1%	13	3.0%	95	1.2%
Periodic Detention	1324	18.3%	100	22.8%	1424	18.5%
TOTAL	7253	100.0%	438	100.0%	7691	100.0%

RESEARCH & STATISTICS
 N.S.W. DEPT OF CORRECTIVE SERVICES

SOURCE : N.S.W. PRISON CENSUS 30 JUNE 1996
 ALL PRISONERS - includes Periodic Detention

	SEX OF PRISONER				TOTAL	
	Males		Females			
COUNTRY OF BIRTH						
England	195	2.7%	15	3.4%	210	2.7%
Scotland	37	.5%	3	.7%	40	.5%
Wales	4	.1%			4	.1%
Northern Ireland	7	.1%			7	.1%
Ireland (undefined)	14	.2%			14	.2%
Albania	3	.0%			3	.0%
Austria	7	.1%			7	.1%
Belgium	3	.0%	1	.2%	4	.1%
Bulgaria	2	.0%			2	.0%
Czech	6	.1%	1	.2%	7	.1%
Denmark	1	.0%			1	.0%
Finland	2	.0%			2	.0%
France	11	.2%	1	.2%	12	.2%
Germany	32	.4%	1	.2%	33	.4%
Greece	29	.4%			29	.4%
Hungary	8	.1%			8	.1%
Italy	56	.8%	3	.7%	59	.8%
Malta	24	.3%			24	.3%
Holland	6	.1%	1	.2%	7	.1%
Poland	10	.1%	2	.5%	12	.2%
Portugal	6	.1%			6	.1%
Romania	37	.5%	4	.9%	41	.5%
Spain	17	.2%			17	.2%
Sweden	2	.0%	1	.2%	3	.0%
Switzerland	1	.0%			1	.0%
USSR	6	.1%			6	.1%
Yugoslav	82	1.1%	1	.2%	83	1.1%
Northern Europe NEI	1	.0%			1	.0%
Bahrain Arabia	8	.1%			8	.1%
Burma	1	.0%			1	.0%
China	45	.6%	1	.2%	46	.6%
Cyprus	7	.1%			7	.1%
Hong Kong	24	.3%	1	.2%	25	.3%
India	10	.1%	1	.2%	11	.1%
Indonesia	5	.1%			5	.1%
Iran	7	.1%			7	.1%
Iraq	7	.1%			7	.1%
Israel	6	.1%			6	.1%
Japan	3	.0%			3	.0%
Kampuchea	21	.3%	2	.5%	23	.3%
Korea	10	.1%			10	.1%
Laos	13	.2%	1	.2%	14	.2%
Lebanon	128	1.8%	7	1.6%	135	1.8%
Malaysia	29	.4%	2	.5%	31	.4%
Pakistan	5	.1%			5	.1%
Philippines	16	.2%	1	.2%	17	.2%
Singapore	22	.3%	1	.2%	23	.3%
Sri Lanka	3	.0%			3	.0%

RESEARCH & STATISTICS
 N.S.W. DEPT OF CORRECTIVE SERVICES

SOURCE : N.S.W. PRISON CENSUS 30 JUNE 1996
 ALL PRISONERS - includes Periodic Detention

	SEX OF PRISONER				TOTAL	
	Males		Females			
Syria	2	.0%			2	.0%
Taiwan	4	.1%			4	.1%
Thailand	14	.2%	4	.9%	18	.2%
Timor	3	.0%			3	.0%
Turkey	31	.4%			31	.4%
Vietnam	209	2.9%	13	3.0%	222	2.9%
Other Asia	7	.1%			7	.1%
Argentina	10	.1%	1	.2%	11	.1%
Bolivia	2	.0%			2	.0%
Brazil	5	.1%			5	.1%
Canada	6	.1%			6	.1%
Chile	9	.1%	3	.7%	12	.2%
Colombia	10	.1%	2	.5%	12	.2%
Caribbean	1	.0%			1	.0%
Ecuador	1	.0%			1	.0%
Mexico	1	.0%	1	.2%	2	.0%
Peru	5	.1%			5	.1%
USA	11	.2%	1	.2%	12	.2%
Uruguay	9	.1%			9	.1%
Venezuela	1	.0%			1	.0%
America NEI	24	.3%	1	.2%	25	.3%
Egypt	12	.2%			12	.2%
Kenya	1	.0%			1	.0%
Uganda etc	1	.0%			1	.0%
Mauritius	3	.0%			3	.0%
South Africa	12	.2%			12	.2%
Zimbabwe	2	.0%			2	.0%
Africa NEI	10	.1%			10	.1%
Cook Islands	2	.0%			2	.0%
Fiji	40	.6%	3	.7%	43	.6%
N Z	193	2.7%	15	3.4%	208	2.7%
Norfolk Island	1	.0%			1	.0%
PNG	10	.1%			10	.1%
Tonga	28	.4%			28	.4%
Western Samoa	13	.2%	1	.2%	14	.2%
Oceania NEI	20	.3%	1	.2%	21	.3%
New South Wales	4702	64.8%	296	67.6%	4998	65.0%
Victoria	229	3.2%	13	3.0%	242	3.1%
Queensland	170	2.3%	13	3.0%	183	2.4%
South Australia	55	.8%	2	.5%	57	.7%
Western Australia	34	.5%	2	.5%	36	.5%
Tasmania	33	.5%	3	.7%	36	.5%
Northern Territory	10	.1%			10	.1%
ACT	75	1.0%	2	.5%	77	1.0%
Australia	50	.7%	2	.5%	52	.7%
Unknown	203	2.8%	8	1.8%	211	2.7%
TOTAL	7253	100.0%	438	100.0%	7691	100.0%

RESEARCH & STATISTICS
 N.S.W. DEPT OF CORRECTIVE SERVICES

SOURCE : N.S.W. PRISON CENSUS 30 JUNE 1996
 ALL INMATES - includes Periodic Detention

	SEX OF PRISONER				TOTAL	
	Males		Females			
Last Known Address - LGA						
Leichhardt	106	1.5%	9	2.1%	115	1.5%
Marrickville	169	2.3%	11	2.5%	180	2.3%
Randwick	119	1.6%	11	2.5%	130	1.7%
Sydney	302	4.2%	27	6.2%	329	4.3%
Waverley	46	.6%	7	1.6%	53	.7%
Woollahra	40	.6%	3	.7%	43	.6%
Ashfield	52	.7%	5	1.1%	57	.7%
Burwood	15	.2%	1	.2%	16	.2%
Concord	14	.2%			14	.2%
Drummoyne	21	.3%	3	.7%	24	.3%
Strathfield	43	.6%	2	.5%	45	.6%
Bankstown	218	3.0%	12	2.7%	230	3.0%
Botany	27	.4%	3	.7%	30	.4%
Canterbury	163	2.2%	9	2.1%	172	2.2%
Hurstville	66	.9%	4	.9%	70	.9%
Kogarah	15	.2%			15	.2%
Rockdale	75	1.0%	7	1.6%	82	1.1%
Sutherland	73	1.0%	8	1.8%	81	1.1%
Camden	11	.2%	2	.5%	13	.2%
Campbelltown	275	3.8%	18	4.1%	293	3.8%
Liverpool	329	4.5%	29	6.6%	358	4.7%
Wolondilly	17	.2%	1	.2%	18	.2%
Auburn	69	1.0%	4	.9%	73	.9%
Baulkham Hills	52	.7%	3	.7%	55	.7%
Blacktown	401	5.5%	28	6.4%	429	5.6%
Blue Mountains	42	.6%	2	.5%	44	.6%
Hawkesbury	50	.7%	1	.2%	51	.7%
Fairfield	214	3.0%	18	4.1%	232	3.0%
Holroyd	82	1.1%	8	1.8%	90	1.2%
Parramatta	175	2.4%	10	2.3%	185	2.4%
Penrith	200	2.8%	13	3.0%	213	2.8%
Hornsby	37	.5%	4	.9%	41	.5%
Hunters Hill	3	.0%			3	.0%
Ku-ring-gai	17	.2%	2	.5%	19	.2%
Lane Cove	9	.1%			9	.1%
Manly	32	.4%	2	.5%	34	.4%
Mosman	10	.1%			10	.1%
North Sydney	20	.3%	3	.7%	23	.3%
Ryde	57	.8%	2	.5%	59	.8%
Warringah	82	1.1%	3	.7%	85	1.1%
Willoughby	24	.3%	1	.2%	25	.3%
Gosford	126	1.7%	10	2.3%	136	1.8%
Wyong	131	1.8%	9	2.1%	140	1.8%
HUNTER	622	8.6%	26	5.9%	648	8.4%
ILLAWARRA	376	5.2%	24	5.5%	400	5.2%
RICHMOND TWEED	144	2.0%	7	1.6%	151	2.0%
MID NORTHERN	250	3.4%	12	2.7%	262	3.4%
NORTHERN	183	2.5%	9	2.1%	192	2.5%

RESEARCH & STATISTICS
 N.S.W. DEPT OF CORRECTIVE SERVICES

SOURCE : N.S.W. PRISON CENSUS 30 JUNE 1996
 ALL INMATES - includes Periodic Detention

	SEX OF PRISONER				TOTAL	
	Males		Females			
NORTH WESTERN	183	2.5%	3	.7%	186	2.4%
CENTRAL WEST	182	2.5%	7	1.6%	189	2.5%
SOUTH EASTERN	128	1.8%	2	.5%	130	1.7%
MURRUMBIDGEE	131	1.8%	5	1.1%	136	1.8%
MURRAY	74	1.0%	5	1.1%	79	1.0%
FARWEST	18	.2%	2	.5%	20	.3%
Victoria	51	.7%	1	.2%	52	.7%
Queensland	89	1.2%	2	.5%	91	1.2%
South Australia	8	.1%			8	.1%
Western Australia	20	.3%			20	.3%
Tasmania	7	.1%			7	.1%
Northern Territory	1	.0%			1	.0%
Aust Capital Territory	98	1.4%	6	1.4%	104	1.4%
No Fixed Abode	276	3.8%	16	3.7%	292	3.8%
Unknown	383	5.3%	16	3.7%	399	5.2%
TOTAL	7253	100.0%	438	100.0%	7691	100.0%

RESEARCH & STATISTICS
 N.S.W. DEPT OF CORRECTIVE SERVICES

**FULL-TIME
CUSTODY
INMATES**

SOURCE : N.S.W. PRISON CENSUS 30 JUNE 1996
In FULL-TIME CUSTODY only

	SEX OF PRISONER				TOTAL	
	Males		Females			
MARITAL STATUS						
Never Married	3067	51.7%	115	34.0%	3182	50.8%
Married/De-facto	2051	34.6%	158	46.7%	2209	35.2%
Separated	301	5.1%	24	7.1%	325	5.2%
Divorced	370	6.2%	23	6.8%	393	6.3%
Widowed	58	1.0%	10	3.0%	68	1.1%
Unknown	82	1.4%	8	2.4%	90	1.4%
TOTAL	5929	100.0%	338	100.0%	6267	100.0%
ABORIGINALITY						
Aboriginal/TSI	803	13.5%	66	19.5%	869	13.9%
Not Aboriginal	5087	85.8%	268	79.3%	5355	85.4%
Unknown	39	.7%	4	1.2%	43	.7%
TOTAL	5929	100.0%	338	100.0%	6267	100.0%
KNOWN PRIOR IMPRISONMENT						
Yes	3215	54.2%	172	50.9%	3387	54.0%
No	2454	41.4%	153	45.3%	2607	41.6%
Unknown	260	4.4%	13	3.8%	273	4.4%
TOTAL	5929	100.0%	338	100.0%	6267	100.0%
CLASSIFICATION						
PDC/Other	112	1.9%	20	5.9%	132	2.1%
A1	10	.2%			10	.2%
A2	412	6.9%	4	1.2%	416	6.6%
B	775	13.1%	39	11.5%	814	13.0%
C1	914	15.4%	34	10.1%	948	15.1%
C2	2052	34.6%	127	37.6%	2179	34.8%
C3	539	9.1%	43	12.7%	582	9.3%
E1	56	.9%			56	.9%
E2	321	5.4%	16	4.7%	337	5.4%
Remand/Trial	738	12.4%	55	16.3%	793	12.7%
TOTAL	5929	100.0%	338	100.0%	6267	100.0%
STATE OF COURT						
New South Wales	5812	98.0%	332	98.2%	6144	98.0%
Victoria	9	.2%	1	.3%	10	.2%
Queensland	9	.2%	1	.3%	10	.2%
South Australia	3	.1%			3	.0%
Western Australia	3	.1%			3	.0%
Tasmania	2	.0%			2	.0%
Aust. Capital Territory	91	1.5%	4	1.2%	95	1.5%
TOTAL	5929	100.0%	338	100.0%	6267	100.0%

RESEARCH & STATISTICS
N.S.W. DEPT OF CORRECTIVE SERVICES

SOURCE : N.S.W. PRISON CENSUS 30 JUNE 1996
In FULL-TIME CUSTODY only

	SEX OF PRISONER				TOTAL	
	Males		Females			
AGE AT CENSUS DATE						
17			1	.3%	1	.0%
18	59	1.0%	7	2.1%	66	1.1%
19	178	3.0%	8	2.4%	186	3.0%
20	236	4.0%	14	4.1%	250	4.0%
21-22	483	8.1%	24	7.1%	507	8.1%
23-24	579	9.8%	31	9.2%	610	9.7%
25-29	1297	21.9%	75	22.2%	1372	21.9%
30-34	1037	17.5%	64	18.9%	1101	17.6%
35-39	772	13.0%	50	14.8%	822	13.1%
40-44	517	8.7%	21	6.2%	538	8.6%
45-49	345	5.8%	18	5.3%	363	5.8%
50-54	187	3.2%	12	3.6%	199	3.2%
55-59	127	2.1%	5	1.5%	132	2.1%
60-64	60	1.0%	5	1.5%	65	1.0%
65+	52	.9%	3	.9%	55	.9%
TOTAL	5929	100.0%	338	100.0%	6267	100.0%
MOST SERIOUS OFFENCE						
Murder	379	6.4%	20	5.9%	399	6.4%
Attempt Murder	73	1.2%	4	1.2%	77	1.2%
Conspiracy to Murder	4	.1%	3	.9%	7	.1%
Manslaughter	89	1.5%	16	4.7%	105	1.7%
Major Assault	512	8.6%	19	5.6%	531	8.5%
Other Assault	285	4.8%	11	3.3%	296	4.7%
Rape	6	.1%			6	.1%
Serious Sexual Assault	397	6.7%	3	.9%	400	6.4%
Incest/Carnal Knowledge	117	2.0%			117	1.9%
Indecent Assault	76	1.3%			76	1.2%
Buggery/Bestial	57	1.0%			57	.9%
Robbery Major Assault	645	10.9%	17	5.0%	662	10.6%
Other Robbery	291	4.9%	14	4.1%	305	4.9%
Fraud	177	3.0%	43	12.7%	220	3.5%
Break Enter and Steal	856	14.4%	47	13.9%	903	14.4%
Other Steal	586	9.9%	49	14.5%	635	10.1%
Driving/Traffic	220	3.7%	7	2.1%	227	3.6%
Offences against Order	293	4.9%	20	5.9%	313	5.0%
Drug Offences	769	13.0%	57	16.9%	826	13.2%
Other Offences	97	1.6%	8	2.4%	105	1.7%
TOTAL	5929	100.0%	338	100.0%	6267	100.0%

RESEARCH & STATISTICS
N.S.W. DEPT OF CORRECTIVE SERVICES

SOURCE : N.S.W. PRISON CENSUS 30 JUNE 1996
In FULL-TIME CUSTODY only

	SEX OF PRISONER				TOTAL	
	Males		Females			
LEVEL OF COURT						
Supreme	636	10.7%	40	11.8%	676	10.8%
District	3063	51.7%	130	38.5%	3193	50.9%
Local	2134	36.0%	163	48.2%	2297	36.7%
Childrens	7	.1%			7	.1%
Federal/Other	89	1.5%	5	1.5%	94	1.5%
TOTAL	5929	100.0%	338	100.0%	6267	100.0%
AGGREGATE SENTENCE						
Unsentenced	748	12.6%	56	16.6%	804	12.8%
1 - 7 days	12	.2%	2	.6%	14	.2%
8 days < 1 month	71	1.2%	10	3.0%	81	1.3%
1 month < 3 months	83	1.4%	10	3.0%	93	1.5%
3 months < 6 months	327	5.5%	30	8.9%	357	5.7%
6 months < 9 months	441	7.4%	34	10.1%	475	7.6%
9 months < 1 year	361	6.1%	22	6.5%	383	6.1%
1 year < 2 years	712	12.0%	46	13.6%	758	12.1%
2 years < 5 years	1302	22.0%	64	18.9%	1366	21.8%
5 years < 7 years	631	10.6%	26	7.7%	657	10.5%
7 years < 10 years	541	9.1%	17	5.0%	558	8.9%
10 years < 15 years	290	4.9%	10	3.0%	300	4.8%
15 years < 20 years	122	2.1%	7	2.1%	129	2.1%
20 years+	136	2.3%	1	.3%	137	2.2%
Life	104	1.8%	2	.6%	106	1.7%
Forensic Patient	48	.8%	1	.3%	49	.8%
TOTAL	5929	100.0%	338	100.0%	6267	100.0%
IS ANY OFFENCE FEDERAL?						
Yes	312	5.3%	32	9.5%	344	5.5%
No	5617	94.7%	306	90.5%	5923	94.5%
TOTAL	5929	100.0%	338	100.0%	6267	100.0%
IS THE MSO FEDERAL?						
Yes	255	4.3%	29	8.6%	284	4.5%
No	5674	95.7%	309	91.4%	5983	95.5%
TOTAL	5929	100.0%	338	100.0%	6267	100.0%

RESEARCH & STATISTICS
N.S.W. DEPT OF CORRECTIVE SERVICES

SOURCE : N.S.W. PRISON CENSUS 30 JUNE 1996
In FULL-TIME CUSTODY only

	SEX OF PRISONER				TOTAL	
	Males		Females			
CENTRE SECURITY RATING						
Maximum Security						
Goulburn (Main) C.C.	384	6.5%			384	6.1%
Maitland C.C.	118	2.0%			118	1.9%
Special Purpose Centre	45	.8%	2	.6%	47	.7%
Malabar Hospital	107	1.8%			107	1.7%
Reception & Induction	238	4.0%			238	3.8%
Special Care Centre	41	.7%			41	.7%
Remand Centre	347	5.9%			347	5.5%
Lithgow C.C.	270	4.6%			270	4.3%
Medium Security						
Bathurst (Main) C.C.	223	3.8%			223	3.6%
Broken Hill C.C.	37	.6%			37	.6%
Cooma C.C.	158	2.7%			158	2.5%
Grafton (Main) C.C.	128	2.2%	7	2.1%	135	2.2%
Mulawa C.C.			197	58.3%	197	3.1%
Parramatta C.C.	411	6.9%			411	6.6%
Parklea C.C.	295	5.0%			295	4.7%
Junee (Medium) C.C.	243	4.1%			243	3.9%
Tamworth C.C.	30	.5%			30	.5%
Minimum Security						
Berrima C.C.	65	1.1%			65	1.0%
Emu Plains C.C.			104	30.8%	104	1.7%
Norma Parker Centre			28	8.3%	28	.4%
Silverwater C.C.	335	5.7%			335	5.3%
Goulburn X Wing	93	1.6%			93	1.5%
Bathurst X Wing	93	1.6%			93	1.5%
Grafton C Units	117	2.0%			117	1.9%
Junee (Minimum) C.C.	344	5.8%			344	5.5%
Training Centre	372	6.3%			372	5.9%
St Heliers C.C.	229	3.9%			229	3.7%
Glen Innes C.C.	114	1.9%			114	1.8%
Mannus C.C.	123	2.1%			123	2.0%
Oberon C.C.	95	1.6%			95	1.5%
Kirkconnell C.C.	191	3.2%			191	3.0%
John Morony C.C.	235	4.0%			235	3.7%
Cessnock C.C.	420	7.1%			420	6.7%
Fines Centre	28	.5%			28	.4%
TOTAL	5929	100.0%	338	100.0%	6267	100.0%

RESEARCH & STATISTICS
N.S.W. DEPT OF CORRECTIVE SERVICES

SOURCE : N.S.W. PRISON CENSUS 30 JUNE 1996
In FULL-TIME CUSTODY only

	SEX OF PRISONER				TOTAL	
	Males		Females			
LEGAL STATUS						
Sentenced No Appeal	4661	78.6%	240	71.0%	4901	78.2%
Appellant	472	8.0%	41	12.1%	513	8.2%
Forensic Patient	48	.8%	1	.3%	49	.8%
Remand/Trial	744	12.5%	56	16.6%	800	12.8%
Awaiting Deportation	3	.1%			3	.0%
Civil Prisoner	1	.0%			1	.0%
TOTAL	5929	100.0%	338	100.0%	6267	100.0%
IS PRISONER IN FOR BOP?						
No Breach	5110	86.2%	301	89.1%	5411	86.3%
Breach of Parole	511	8.6%	24	7.1%	535	8.5%
Breach of licence	1	.0%			1	.0%
Escapee	157	2.6%	10	3.0%	167	2.7%
BOP and Escape	147	2.5%	2	.6%	149	2.4%
BOL and Escape	1	.0%			1	.0%
Combination BOP/BOL/Esc	2	.0%	1	.3%	3	.0%
TOTAL	5929	100.0%	338	100.0%	6267	100.0%
TYPE OF SENTENCE						
Not under sentence	748	12.6%	56	16.6%	804	12.8%
Life	104	1.8%	2	.6%	106	1.7%
Forensic Patient	48	.8%	1	.3%	49	.8%
Minimum & Additional	3744	63.1%	177	52.4%	3921	62.6%
Fixed Term	1203	20.3%	89	26.3%	1292	20.6%
Fine Default	82	1.4%	13	3.8%	95	1.5%
TOTAL	5929	100.0%	338	100.0%	6267	100.0%

RESEARCH & STATISTICS
N.S.W. DEPT OF CORRECTIVE SERVICES

SOURCE : N.S.W. PRISON CENSUS 30 JUNE 1996
In FULL-TIME CUSTODY only

COUNTRY OF BIRTH	SEX OF PRISONER				TOTAL	
	Males		Females			
England	158	2.7%	13	3.8%	171	2.7%
Scotland	31	.5%	2	.6%	33	.5%
Wales	4	.1%			4	.1%
Northern Ireland	6	.1%			6	.1%
Ireland (undefined)	10	.2%			10	.2%
Albania	3	.1%			3	.0%
Austria	5	.1%			5	.1%
Belgium	3	.1%	1	.3%	4	.1%
Bulgaria	2	.0%			2	.0%
Czech	5	.1%	1	.3%	6	.1%
Finland	2	.0%			2	.0%
France	9	.2%	1	.3%	10	.2%
Germany	27	.5%			27	.4%
Greece	25	.4%			25	.4%
Hungary	7	.1%			7	.1%
Italy	49	.8%	1	.3%	50	.8%
Malta	19	.3%			19	.3%
Holland	5	.1%			5	.1%
Poland	7	.1%	2	.6%	9	.1%
Portugal	6	.1%			6	.1%
Romania	35	.6%	1	.3%	36	.6%
Spain	13	.2%			13	.2%
Sweden	2	.0%	1	.3%	3	.0%
USSR	3	.1%			3	.0%
Yugoslav	65	1.1%	1	.3%	66	1.1%
Northern Europe NEI	1	.0%			1	.0%
Bahrain Arabia	5	.1%			5	.1%
China	38	.6%	1	.3%	39	.6%
Cyprus	6	.1%			6	.1%
Hong Kong	22	.4%	1	.3%	23	.4%
India	8	.1%	1	.3%	9	.1%
Indonesia	5	.1%			5	.1%
Iran	6	.1%			6	.1%
Iraq	6	.1%			6	.1%
Israel	6	.1%			6	.1%
Japan	3	.1%			3	.0%
Kampuchea	17	.3%	1	.3%	18	.3%
Korea	8	.1%			8	.1%
Laos	10	.2%	1	.3%	11	.2%
Lebanon	106	1.8%	7	2.1%	113	1.8%
Malaysia	25	.4%	2	.6%	27	.4%
Pakistan	5	.1%			5	.1%
Philippines	11	.2%	1	.3%	12	.2%
Singapore	19	.3%	1	.3%	20	.3%
Sri Lanka	3	.1%			3	.0%
Syria	2	.0%			2	.0%
Taiwan	3	.1%			3	.0%
Thailand	12	.2%	4	1.2%	16	.3%

RESEARCH & STATISTICS
N.S.W. DEPT OF CORRECTIVE SERVICES

SOURCE : N.S.W. PRISON CENSUS 30 JUNE 1996
In FULL-TIME CUSTODY only

	SEX OF PRISONER				TOTAL	
	Males		Females			
Timor	3	.1%			3	.0%
Turkey	27	.5%			27	.4%
Vietnam	187	3.2%	10	3.0%	197	3.1%
Other Asia	6	.1%			6	.1%
Argentina	8	.1%			8	.1%
Bolivia	2	.0%			2	.0%
Brazil	5	.1%			5	.1%
Canada	6	.1%			6	.1%
Chile	6	.1%	3	.9%	9	.1%
Colombia	10	.2%	2	.6%	12	.2%
Ecuador	1	.0%			1	.0%
Mexico	1	.0%			1	.0%
Peru	5	.1%			5	.1%
USA	10	.2%	1	.3%	11	.2%
Uruguay	7	.1%			7	.1%
Venezuela	1	.0%			1	.0%
America NEI	20	.3%	1	.3%	21	.3%
Egypt	10	.2%			10	.2%
Kenya	1	.0%			1	.0%
Uganda etc	1	.0%			1	.0%
Mauritius	2	.0%			2	.0%
South Africa	11	.2%			11	.2%
Zimbabwe	2	.0%			2	.0%
Africa NEI	10	.2%			10	.2%
Cook Islands	1	.0%			1	.0%
Fiji	38	.6%	1	.3%	39	.6%
N Z	159	2.7%	10	3.0%	169	2.7%
Norfolk Island	1	.0%			1	.0%
PNG	9	.2%			9	.1%
Tonga	22	.4%			22	.4%
Western Samoa	11	.2%			11	.2%
Oceania NEI	16	.3%	1	.3%	17	.3%
New South Wales	3895	65.7%	227	67.2%	4122	65.8%
Victoria	204	3.4%	11	3.3%	215	3.4%
Queensland	147	2.5%	13	3.8%	160	2.6%
South Australia	44	.7%	2	.6%	46	.7%
Western Australia	29	.5%	2	.6%	31	.5%
Tasmania	29	.5%	2	.6%	31	.5%
Northern Territory	8	.1%			8	.1%
ACT	65	1.1%	2	.6%	67	1.1%
Australia	34	.6%	1	.3%	35	.6%
Unknown	47	.8%	5	1.5%	52	.8%
TOTAL	5929	100.0%	338	100.0%	6267	100.0%

RESEARCH & STATISTICS
N.S.W. DEPT OF CORRECTIVE SERVICES

SOURCE : N.S.W. PRISON CENSUS 30 JUNE 1996
In FULL-TIME CUSTODY only

	SEX OF PRISONER				TOTAL	
	Males		Females			
Last Known Address - LGA						
Leichhardt	95	1.6%	8	2.4%	103	1.6%
Marrickville	147	2.5%	9	2.7%	156	2.5%
Randwick	102	1.7%	9	2.7%	111	1.8%
Sydney	271	4.6%	26	7.7%	297	4.7%
Waverley	39	.7%	6	1.8%	45	.7%
Woollahra	36	.6%	3	.9%	39	.6%
Ashfield	42	.7%	5	1.5%	47	.7%
Burwood	11	.2%			11	.2%
Concord	13	.2%			13	.2%
Drummoyne	16	.3%	1	.3%	17	.3%
Strathfield	40	.7%	1	.3%	41	.7%
Bankstown	172	2.9%	9	2.7%	181	2.9%
Botany	20	.3%	3	.9%	23	.4%
Canterbury	135	2.3%	8	2.4%	143	2.3%
Hurstville	53	.9%	3	.9%	56	.9%
Kogarah	14	.2%			14	.2%
Rockdale	60	1.0%	4	1.2%	64	1.0%
Sutherland	52	.9%	4	1.2%	56	.9%
Camden	7	.1%	2	.6%	9	.1%
Campbelltown	200	3.4%	8	2.4%	208	3.3%
Liverpool	246	4.1%	21	6.2%	267	4.3%
Wolondilly	13	.2%	1	.3%	14	.2%
Auburn	57	1.0%	3	.9%	60	1.0%
Baulkham Hills	32	.5%	3	.9%	35	.6%
Blacktown	333	5.6%	19	5.6%	352	5.6%
Blue Mountains	33	.6%	2	.6%	35	.6%
Hawkesbury	37	.6%	1	.3%	38	.6%
Fairfield	175	3.0%	13	3.8%	188	3.0%
Holroyd	64	1.1%	6	1.8%	70	1.1%
Parramatta	143	2.4%	8	2.4%	151	2.4%
Penrith	142	2.4%	7	2.1%	149	2.4%
Hornsby	27	.5%	2	.6%	29	.5%
Hunters Hill	2	.0%			2	.0%
Ku-ring-gai	14	.2%	1	.3%	15	.2%
Lane Cove	8	.1%			8	.1%
Manly	23	.4%	2	.6%	25	.4%
Mosman	6	.1%			6	.1%
North Sydney	17	.3%	2	.6%	19	.3%
Ryde	43	.7%	2	.6%	45	.7%
Warringah	55	.9%	3	.9%	58	.9%
Willoughby	19	.3%			19	.3%
Gosford	105	1.8%	5	1.5%	110	1.8%
Wyong	99	1.7%	6	1.8%	105	1.7%
HUNTER	509	8.6%	17	5.0%	526	8.4%
ILLAWARRA	267	4.5%	18	5.3%	285	4.5%
RICHMOND TWEED	135	2.3%	7	2.1%	142	2.3%
MID NORTHERN	226	3.8%	12	3.6%	238	3.8%
NORTHERN	176	3.0%	9	2.7%	185	3.0%

RESEARCH & STATISTICS
N.S.W. DEPT OF CORRECTIVE SERVICES

SOURCE : N.S.W. PRISON CENSUS 30 JUNE 1996
 In FULL-TIME CUSTODY only

	SEX OF PRISONER				TOTAL	
	Males		Females			
NORTH WESTERN	180	3.0%	3	.9%	183	2.9%
CENTRAL WEST	167	2.8%	6	1.8%	173	2.8%
SOUTH EASTERN	106	1.8%	2	.6%	108	1.7%
MURRUMBIDGEE	106	1.8%	3	.9%	109	1.7%
MURRAY	69	1.2%	3	.9%	72	1.1%
FARWEST	18	.3%	2	.6%	20	.3%
Victoria	50	.8%	1	.3%	51	.8%
Queensland	83	1.4%	2	.6%	85	1.4%
South Australia	8	.1%			8	.1%
Western Australia	20	.3%			20	.3%
Tasmania	7	.1%			7	.1%
Northern Territory	1	.0%			1	.0%
Aust Capital Territory	93	1.6%	6	1.8%	99	1.6%
No Fixed Abode	275	4.6%	16	4.7%	291	4.6%
Unknown	215	3.6%	15	4.4%	230	3.7%
TOTAL	5929	100.0%	338	100.0%	6267	100.0%

RESEARCH & STATISTICS
 N.S.W. DEPT OF CORRECTIVE SERVICES

PERIODIC DETAINEEES

SOURCE : N.S.W. PRISON CENSUS 30 JUNE 1996
 Periodic Detainees only

	SEX OF PRISONER				TOTAL	
	Males		Females			
MARITAL STATUS						
Never Married	609	46.0%	46	46.0%	655	46.0%
Married/De-facto	408	30.8%	36	36.0%	444	31.2%
Separated	67	5.1%	9	9.0%	76	5.3%
Divorced	64	4.8%	5	5.0%	69	4.8%
Widowed	5	.4%	4	4.0%	9	.6%
Unknown	171	12.9%			171	12.0%
TOTAL	1324	100.0%	100	100.0%	1424	100.0%
ABORIGINALITY						
Aboriginal/TSI	75	5.7%	8	8.0%	83	5.8%
Not Aboriginal	1151	86.9%	92	92.0%	1243	87.3%
Unknown	98	7.4%			98	6.9%
TOTAL	1324	100.0%	100	100.0%	1424	100.0%
KNOWN PRIOR IMPRISONMENT						
Yes	403	30.4%	23	23.0%	426	29.9%
No	826	62.4%	70	70.0%	896	62.9%
Unknown	95	7.2%	7	7.0%	102	7.2%
TOTAL	1324	100.0%	100	100.0%	1424	100.0%
CLASSIFICATION						
PDC/Other	1324	100.0%	100	100.0%	1424	100.0%
TOTAL	1324	100.0%	100	100.0%	1424	100.0%
STATE OF COURT						
New South Wales	1324	100.0%	100	100.0%	1424	100.0%
TOTAL	1324	100.0%	100	100.0%	1424	100.0%

RESEARCH & STATISTICS
 N.S.W. DEPT OF CORRECTIVE SERVICES

SOURCE : N.S.W. PRISON CENSUS 30 JUNE 1996
 Periodic Detainees only

	SEX OF PRISONER				TOTAL	
	Males		Females			
AGE AT CENSUS DATE						
18	7	.5%			7	.5%
19	60	4.5%	2	2.0%	62	4.4%
20	64	4.8%	3	3.0%	67	4.7%
21-22	154	11.6%	7	7.0%	161	11.3%
23-24	156	11.8%	9	9.0%	165	11.6%
25-29	286	21.6%	24	24.0%	310	21.8%
30-34	204	15.4%	12	12.0%	216	15.2%
35-39	151	11.4%	16	16.0%	167	11.7%
40-44	99	7.5%	7	7.0%	106	7.4%
45-49	70	5.3%	8	8.0%	78	5.5%
50-54	29	2.2%	3	3.0%	32	2.2%
55-59	21	1.6%	5	5.0%	26	1.8%
60-64	16	1.2%	2	2.0%	18	1.3%
65+	7	.5%	2	2.0%	9	.6%
TOTAL	1324	100.0%	100	100.0%	1424	100.0%
MOST SERIOUS OFFENCE						
Murder	1	.1%			1	.1%
Manslaughter	1	.1%	1	1.0%	2	.1%
Major Assault	119	9.0%	1	1.0%	120	8.4%
Other Assault	81	6.1%	1	1.0%	82	5.8%
Serious Sexual Assault	24	1.8%			24	1.7%
Incest/Carnal Knowledge	5	.4%			5	.4%
Indecent Assault	32	2.4%			32	2.2%
Buggery/Bestial	3	.2%	1	1.0%	4	.3%
Robbery Major Assault	28	2.1%	1	1.0%	29	2.0%
Other Robbery	30	2.3%	3	3.0%	33	2.3%
Fraud	113	8.5%	33	33.0%	146	10.3%
Break Enter and Steal	99	7.5%	4	4.0%	103	7.2%
Other Steal	176	13.3%	16	16.0%	192	13.5%
Driving/Traffic	290	21.9%	7	7.0%	297	20.9%
Offences against Order	105	7.9%	4	4.0%	109	7.7%
Drug Offences	201	15.2%	28	28.0%	229	16.1%
Other Offences	16	1.2%			16	1.1%
TOTAL	1324	100.0%	100	100.0%	1424	100.0%

RESEARCH & STATISTICS
 N.S.W. DEPT OF CORRECTIVE SERVICES

SOURCE : N.S.W. PRISON CENSUS 30 JUNE 1996
 Periodic Detainees only

	SEX OF PRISONER				TOTAL	
	Males		Females			
LEVEL OF COURT						
Supreme	15	1.1%	3	3.0%	18	1.3%
District	623	47.1%	55	55.0%	678	47.6%
Local	686	51.8%	42	42.0%	728	51.1%
TOTAL	1324	100.0%	100	100.0%	1424	100.0%
AGGREGATE SENTENCE						
Periodic Detention	1324	100.0%	100	100.0%	1424	100.0%
TOTAL	1324	100.0%	100	100.0%	1424	100.0%
IS ANY OFFENCE FEDERAL?						
No	1324	100.0%	100	100.0%	1424	100.0%
TOTAL	1324	100.0%	100	100.0%	1424	100.0%
IS THE MSO FEDERAL?						
No	1324	100.0%	100	100.0%	1424	100.0%
TOTAL	1324	100.0%	100	100.0%	1424	100.0%

RESEARCH & STATISTICS
 N.S.W. DEPT OF CORRECTIVE SERVICES

SOURCE : N.S.W. PRISON CENSUS 30 JUNE 1996
 Periodic Detainees only

	SEX OF PRISONER				TOTAL	
	Males		Females			
CENTRE SECURITY RATING Periodic Detention						
Campbelltown P.D.C.	116	8.8%			116	8.1%
Grafton P.D.C.	50	3.8%			50	3.5%
Malabar P.D.C.	169	12.8%			169	11.9%
Malabar Mid Wk P.D.C.	74	5.6%			74	5.2%
Parramatta P.D.C.	89	6.7%			89	6.3%
St Heliers P.D.C.	28	2.1%			28	2.0%
Silverwater P.D.C.	222	16.8%			222	15.6%
Silverwater MidWeek P.D.C.	175	13.2%			175	12.3%
Tomago P.D.C.	149	11.3%			149	10.5%
Windsor P.D.C.	111	8.4%			111	7.8%
Wollongong P.D.C.	106	8.0%			106	7.4%
Mannus P.D.C.	35	2.6%	4	4.0%	39	2.7%
Emu Plains P.D.C.			96	96.0%	96	6.7%
TOTAL	1324	100.0%	100	100.0%	1424	100.0%

RESEARCH & STATISTICS
 N.S.W. DEPT OF CORRECTIVE SERVICES

SOURCE : N.S.W. PRISON CENSUS 30 JUNE 1996
 Periodic Detainees only

	SEX OF PRISONER				TOTAL	
	Males		Females			
LEGAL STATUS						
Sentenced No Appeal	1324	100.0%	100	100.0%	1424	100.0%
TOTAL	1324	100.0%	100	100.0%	1424	100.0%
IS PRISONER IN FOR BOP?						
No Breach	1324	100.0%	100	100.0%	1424	100.0%
TOTAL	1324	100.0%	100	100.0%	1424	100.0%
TYPE OF SENTENCE						
Periodic Detention	1324	100.0%	100	100.0%	1424	100.0%
TOTAL	1324	100.0%	100	100.0%	1424	100.0%

RESEARCH & STATISTICS
 N.S.W. DEPT OF CORRECTIVE SERVICES

SOURCE : N.S.W. PRISON CENSUS 30 JUNE 1996
 Periodic Detainees only

	SEX OF PRISONER				TOTAL	
	Males		Females			
COUNTRY OF BIRTH						
England	37	2.8%	2	2.0%	39	2.7%
Scotland	6	.5%	1	1.0%	7	.5%
Northern Ireland	1	.1%			1	.1%
Ireland (undefined)	4	.3%			4	.3%
Austria	2	.2%			2	.1%
Czech	1	.1%			1	.1%
Denmark	1	.1%			1	.1%
France	2	.2%			2	.1%
Germany	5	.4%	1	1.0%	6	.4%
Greece	4	.3%			4	.3%
Hungary	1	.1%			1	.1%
Italy	7	.5%	2	2.0%	9	.6%
Malta	5	.4%			5	.4%
Holland	1	.1%	1	1.0%	2	.1%
Poland	3	.2%			3	.2%
Romania	2	.2%	3	3.0%	5	.4%
Spain	4	.3%			4	.3%
Switzerland	1	.1%			1	.1%
USSR	3	.2%			3	.2%
Yugoslav	17	1.3%			17	1.2%
Bahrain Arabia	3	.2%			3	.2%
Burma	1	.1%			1	.1%
China	7	.5%			7	.5%
Cyprus	1	.1%			1	.1%
Hong Kong	2	.2%			2	.1%
India	2	.2%			2	.1%
Iran	1	.1%			1	.1%
Iraq	1	.1%			1	.1%
Kampuchea	4	.3%	1	1.0%	5	.4%
Korea	2	.2%			2	.1%
Laos	3	.2%			3	.2%
Lebanon	22	1.7%			22	1.5%
Malaysia	4	.3%			4	.3%
Philippines	5	.4%			5	.4%
Singapore	3	.2%			3	.2%
Taiwan	1	.1%			1	.1%
Thailand	2	.2%			2	.1%
Turkey	4	.3%			4	.3%
Vietnam	22	1.7%	3	3.0%	25	1.8%
Other Asia	1	.1%			1	.1%
Argentina	2	.2%	1	1.0%	3	.2%
Chile	3	.2%			3	.2%
Caribbean	1	.1%			1	.1%
Mexico			1	1.0%	1	.1%
USA	1	.1%			1	.1%
Uruguay	2	.2%			2	.1%
America NEI	4	.3%			4	.3%
Egypt	2	.2%			2	.1%

RESEARCH & STATISTICS
 N.S.W. DEPT OF CORRECTIVE SERVICES

SOURCE : N.S.W. PRISON CENSUS 30 JUNE 1996
 Periodic Detainees only

	SEX OF PRISONER				TOTAL	
	Males		Females			
Mauritius	1	.1%			1	.1%
South Africa	1	.1%			1	.1%
Cook Islands	1	.1%			1	.1%
Fiji	2	.2%	2	2.0%	4	.3%
N Z	34	2.6%	5	5.0%	39	2.7%
PNG	1	.1%			1	.1%
Tonga	6	.5%			6	.4%
Western Samoa	2	.2%	1	1.0%	3	.2%
Oceania NEI	4	.3%			4	.3%
New South Wales	807	61.0%	69	69.0%	876	61.5%
Victoria	25	1.9%	2	2.0%	27	1.9%
Queensland	23	1.7%			23	1.6%
South Australia	11	.8%			11	.8%
Western Australia	5	.4%			5	.4%
Tasmania	4	.3%	1	1.0%	5	.4%
Northern Territory	2	.2%			2	.1%
ACT	10	.8%			10	.7%
Australia	16	1.2%	1	1.0%	17	1.2%
Unknown	156	11.8%	3	3.0%	159	11.2%
TOTAL	1324	100.0%	100	100.0%	1424	100.0%

RESEARCH & STATISTICS
 N.S.W. DEPT OF CORRECTIVE SERVICES

SOURCE : N.S.W. PRISON CENSUS 30 JUNE 1996
 Periodic Detainees only

	SEX OF PRISONER				TOTAL	
	Males		Females			
Last Known Address - LGA						
Leichhardt	11	.8%	1	1.0%	12	.8%
Marrickville	22	1.7%	2	2.0%	24	1.7%
Randwick	17	1.3%	2	2.0%	19	1.3%
Sydney	31	2.3%	1	1.0%	32	2.2%
Waverley	7	.5%	1	1.0%	8	.6%
Woollahra	4	.3%			4	.3%
Ashfield	10	.8%			10	.7%
Burwood	4	.3%	1	1.0%	5	.4%
Concord	1	.1%			1	.1%
Drummoyne	5	.4%	2	2.0%	7	.5%
Strathfield	3	.2%	1	1.0%	4	.3%
Bankstown	46	3.5%	3	3.0%	49	3.4%
Botany	7	.5%			7	.5%
Canterbury	28	2.1%	1	1.0%	29	2.0%
Hurstville	13	1.0%	1	1.0%	14	1.0%
Kogarah	1	.1%			1	.1%
Rockdale	15	1.1%	3	3.0%	18	1.3%
Sutherland	21	1.6%	4	4.0%	25	1.8%
Camden	4	.3%			4	.3%
Campbelltown	75	5.7%	10	10.0%	85	6.0%
Liverpool	83	6.3%	8	8.0%	91	6.4%
Wolondilly	4	.3%			4	.3%
Auburn	12	.9%	1	1.0%	13	.9%
Baulkam Hills	20	1.5%			20	1.4%
Blacktown	68	5.1%	9	9.0%	77	5.4%
Blue Mountains	9	.7%			9	.6%
Hawkesbury	13	1.0%			13	.9%
Fairfield	39	2.9%	5	5.0%	44	3.1%
Holroyd	18	1.4%	2	2.0%	20	1.4%
Parramatta	32	2.4%	2	2.0%	34	2.4%
Penrith	58	4.4%	6	6.0%	64	4.5%
Hornsby	10	.8%	2	2.0%	12	.8%
Hunters Hill	1	.1%			1	.1%
Ku-ring-gai	3	.2%	1	1.0%	4	.3%
Lane Cove	1	.1%			1	.1%
Manly	9	.7%			9	.6%
Mosman	4	.3%			4	.3%
North Sydney	3	.2%	1	1.0%	4	.3%
Ryde	14	1.1%			14	1.0%
Warringah	27	2.0%			27	1.9%
Willoughby	5	.4%	1	1.0%	6	.4%
Gosford	21	1.6%	5	5.0%	26	1.8%
Wyong	32	2.4%	3	3.0%	35	2.5%
HUNTER	113	8.5%	9	9.0%	122	8.6%
ILLAWARRA	109	8.2%	6	6.0%	115	8.1%
RICHMOND TWEED	9	.7%			9	.6%
MID NORTHERN	24	1.8%			24	1.7%
NORTHERN	7	.5%			7	.5%

RESEARCH & STATISTICS
 N.S.W. DEPT OF CORRECTIVE SERVICES

SOURCE : N.S.W. PRISON CENSUS 30 JUNE 1996
 Periodic Detainees only

	SEX OF PRISONER				TOTAL	
	Males		Females			
NORTH WESTERN	3	.2%			3	.2%
CENTRAL WEST	15	1.1%	1	1.0%	16	1.1%
SOUTH EASTERN	22	1.7%			22	1.5%
MURRUMBIDGEE	25	1.9%	2	2.0%	27	1.9%
MURRAY	5	.4%	2	2.0%	7	.5%
Victoria	1	.1%			1	.1%
Queensland	6	.5%			6	.4%
Aust Capital Territory	5	.4%			5	.4%
No Fixed Abode	1	.1%			1	.1%
Unknown	168	12.7%	1	1.0%	169	11.9%
TOTAL	1324	100.0%	100	100.0%	1424	100.0%

RESEARCH & STATISTICS
 N.S.W. DEPT OF CORRECTIVE SERVICES

SENTENCED
INMATES

SENTENCED INMATES, N.S.W., 30 JUNE 1996:
 MOST SERIOUS OFFENCE BY AGGREGATE SENTENCE IMPOSED

MALE INMATES ONLY

MOST SERIOUS OFFENCE	AGGREGATE SENTENCE														GRAND TOTAL
	Under 1 month	1 and under 3 months	3 and under 6 months	6 and under 9 months	9 and under 12 months	1 and under 2 years	2 and under 5 years	5 and under 7 years	7 and under 10 years	10 and under 15 years	15 and under 20 years	20 years and over	Life, F.P.#	P.D.*	
MOST SERIOUS OFFENCE															
Murder.....								2	5	45	60	92	105	1	310
Attempt Murder.....								1	5	7	5	1	6		25
Conspiracy to Murder....									1	1					2
Manslaughter.....						2	7	12	29	14	4	4	12	1	85
Major Assault.....		6	27	30	42	73	133	29	28	18	6	7	15	119	533
Other Assault.....	10	17	51	53	20	18	17	7	16	2		2	1	81	295
Rape.....								1	1	2	1	1			6
Serious Sexual Assault..		1		1	4	21	126	93	74	42	2	4	2	24	394
Incest/Carnal Knowledge.					1	3	36	36	30	7	2			5	120
Indecent Assault.....			3	6	6	13	36	6	2					32	104
Buggery/Bestial.....		1				1	12	15	16	7	1		3	3	59
Robbery Major Assault...			3	7	11	20	160	142	127	63	22	11	3	28	597
Other Robbery.....				4	8	28	131	47	27	6	4		1	30	286
Fraud.....	1	3	12	18	11	28	60	18	11	1				113	276
Break Enter and Steal...	2	3	41	77	87	236	226	68	33	2	1			99	875
Other Steal.....	22	15	67	94	85	119	83	22	14	4			3	176	704
Driving/Traffic.....	27	18	49	62	18	18	19	3	1			1		290	506
Offences against Order..	11	12	56	65	40	49	23	1	7	2			1	105	372
Drug Offences.....	5	5	16	22	22	78	217	123	101	53	11	13		201	867
Other Offences.....	5	2	2	2	6	5	16	5	13	14	3			16	89
GRAND TOTAL.....	83	83	327	441	361	712	1302	631	541	290	122	136	152	1324	6505

Page: 33

Forensic Patient * Periodic detention
 SOURCE: RESEARCH & STATISTICS N.S.W. DEPT OF CORRECTIVE SERVICES

PERCENTAGE OF SENTENCED INMATES, N.S.W., 30 JUNE 1996:
 MOST SERIOUS OFFENCE BY AGGREGATE SENTENCE IMPOSED

MALE INMATES ONLY

MOST SERIOUS OFFENCE	AGGREGATE SENTENCE														GRAND TOTAL
	Under 1 month	1 and under 3 months	3 and under 6 months	6 and under 9 months	9 and under 12 months	1 and under 2 years	2 and under 5 years	5 and under 7 years	7 and under 10 years	10 and under 15 years	15 and under 20 years	20 years and over	Life, F.P.#	P.D.*	
MOST SERIOUS OFFENCE															
Murder.....								.3	.9	15.5	49.2	67.6	69.1	.1	4.8
Attempt Murder.....								.2	.9	2.4	4.1	.7	3.9		.4
Conspiracy to Murder....									.2	.3					.0
Manslaughter.....						.3	.5	1.9	5.4	4.8	3.3	2.9	7.9	.1	1.3
Major Assault.....		7.2	8.3	6.8	11.6	10.3	10.2	4.6	5.2	6.2	4.9	5.1	9.9	9.0	8.2
Other Assault.....	12.0	20.5	15.6	12.0	5.5	2.5	1.3	1.1	3.0	.7		1.5	.7	6.1	4.5
Rape.....								.2	.2	.7	.8	.7			.1
Serious Sexual Assault..		1.2		.2	1.1	2.9	9.7	14.7	13.7	14.5	1.6	2.9	1.3	1.8	6.1
Incest/Carnal Knowledge.					.3	.4	2.8	5.7	5.5	2.4	1.6			.4	1.8
Indecent Assault.....			.9	1.4	1.7	1.8	2.8	1.0	.4					2.4	1.6
Buggery/Bestial.....		1.2				.1	.9	2.4	3.0	2.4	.8	2.0	.2	.9	
Robbery Major Assault...			.9	1.6	3.0	2.8	12.3	22.5	23.5	21.7	18.0	8.1	2.0	2.1	9.2
Other Robbery.....			.9	2.2	3.9	10.1	7.4	5.0	2.1	3.3		.7	2.3	4.4	
Fraud.....	1.2	3.6	3.7	4.1	3.0	3.9	4.6	2.9	2.0	.3				8.5	4.2
Break Enter and Steal...	2.4	3.6	12.5	17.5	24.1	33.1	17.4	10.8	6.1	.7	.8			7.5	13.5
Other Steal.....	26.5	18.1	20.5	21.3	23.5	16.7	6.4	3.5	2.6	1.4		2.0	13.3	10.8	
Driving/Traffic.....	32.5	21.7	15.0	14.1	5.0	2.5	1.5	.5	.2			.7		21.9	7.8
Offences against Order..	13.3	14.5	17.1	14.7	11.1	6.9	1.8	.2	1.3	.7		.7	7.9	5.7	
Drug Offences.....	6.0	6.0	4.9	5.0	6.1	11.0	16.7	19.5	18.7	18.3	9.0	9.6	15.2	13.3	
Other Offences.....	6.0	2.4	.6	.5	1.7	.7	1.2	.8	2.4	4.8	2.5		1.2	1.4	
GRAND TOTAL.....	100.0	100.0	100.0	100.0	100.0	100.0	100.0	100.0	100.0	100.0	100.0	100.0	100.0	100.0	100.0

Page: 34

Forensic Patient * Periodic detention
 SOURCE: RESEARCH & STATISTICS N.S.W. DEPT OF CORRECTIVE SERVICES

SENTENCED INMATES, N.S.W., 30 JUNE 1996:
 MOST SERIOUS OFFENCE BY AGGREGATE SENTENCE IMPOSED

FEMALE INMATES ONLY

MOST SERIOUS OFFENCE	AGGREGATE SENTENCE														GRAND TOTAL
	Under 1 month	1 and under 3 months	3 and under 6 months	6 and under 9 months	9 and under 12 months	1 and under 2 years	2 and under 5 years	5 and under 7 years	7 and under 10 years	10 and under 15 years	15 and under 20 years	20 years and over	Life, F.P.#	P.D.*	
MOST SERIOUS OFFENCE															
Murder.....										1	7	1	2		11
Attempt Murder.....								1							1
Conspiracy to Murder....							1			1					2
Manslaughter.....			1				2	6	2	5				1	17
Major Assault.....				2	2	1	5	1	1				1	1	14
Other Assault.....	3		1	2	2	2								1	11
Serious Sexual Assault..						1	2								3
Buggery/Bestial.....														1	1
Robbery Major Assault...						4	6	1	2					1	14
Other Robbery.....					1	1	3	1	1					3	10
Fraud.....	1	3	8	7	5	7	8	1						33	73
Break Enter and Steal...		1	4	6	5	7	12	2	3					4	44
Other Steal.....	2	2	8	10	4	7	7							16	56
Driving/Traffic.....	1	1	2			3								7	14
Offences against Order..	2	1	3	2	3	5	2							4	22
Drug Offences.....	1	1	3	4		8	15	11	7	3				28	81
Other Offences.....	2	1		1			1	2	1						8
GRAND TOTAL.....	12	10	30	34	22	46	64	26	17	10	7	1	3	100	382

Forensic Patient * Periodic detention
 SOURCE: RESEARCH & STATISTICS N.S.W. DEPT OF CORRECTIVE SERVICES

PERCENTAGE OF SENTENCED INMATES, N.S.W., 30 JUNE 1996:
 MOST SERIOUS OFFENCE BY AGGREGATE SENTENCE IMPOSED

FEMALE INMATES ONLY

MOST SERIOUS OFFENCE	AGGREGATE SENTENCE														GRAND TOTAL
	Under 1 month	1 and under 3 months	3 and under 6 months	6 and under 9 months	9 and under 12 months	1 and under 2 years	2 and under 5 years	5 and under 7 years	7 and under 10 years	10 and under 15 years	15 and under 20 years	20 years and over	Life, F.P.#	P.D.*	
MOST SERIOUS OFFENCE															
Murder.....								3.8		10.0	100.0	100.0	66.7		2.9
Attempt Murder.....															.3
Conspiracy to Murder....							1.6			10.0					.5
Manslaughter.....			3.3				3.1	23.1	11.8	50.0				1.0	4.5
Major Assault.....				5.9	9.1	2.2	7.8	3.8	5.9				33.3	1.0	3.7
Other Assault.....	25.0		3.3	5.9	9.1	4.3								1.0	2.9
Serious Sexual Assault..						2.2	3.1								.8
Buggery/Bestial.....														1.0	.3
Robbery Major Assault...						8.7	9.4	3.8	11.8					1.0	3.7
Other Robbery.....					4.5	2.2	4.7	3.8	5.9					3.0	2.6
Fraud.....	8.3	30.0	26.7	20.6	22.7	15.2	12.5	3.8						33.0	19.1
Break Enter and Steal...		10.0	13.3	17.6	22.7	15.2	18.8	7.7	17.6					4.0	11.5
Other Steal.....	16.7	20.0	26.7	29.4	18.2	15.2	10.9							16.0	14.7
Driving/Traffic.....	8.3	10.0	6.7			6.5								7.0	3.7
Offences against Order..	16.7	10.0	10.0	5.9	13.6	10.9	3.1							4.0	5.8
Drug Offences.....	8.3	10.0	10.0	11.8		17.4	23.4	42.3	41.2	30.0				28.0	21.2
Other Offences.....	16.7	10.0		2.9			1.6	7.7	5.9						2.1
GRAND TOTAL.....	100.0	100.0	100.0	100.0	100.0	100.0	100.0	100.0	100.0	100.0	100.0	100.0	100.0	100.0	100.0

SENTENCED INMATES, N.S.W., 30 JUNE 1996:
 MOST SERIOUS OFFENCE BY SENTENCE SERVED

MALE INMATES ONLY

MOST SERIOUS OFFENCE	SENTENCE SERVED TO CENSUS DATE											GRAND TOTAL
	Under 1 month	1 and under 3 months	3 and under 6 months	6 and under 9 months	9 and under 12 months	1 and under 2 years	2 and under 5 years	5 and under 7 years	7 and under 10 years	10 and under 15 years	15+ years	
MOST SERIOUS OFFENCE												
Murder.....	2	4	1	2	1	7	98	63	70	36	26	310
Attempt Murder.....		1		1		5	8	5	4	1		25
Conspiracy to Murder....						1	1					2
Manslaughter.....	5	1		3	4	12	36	14	6	3	1	85
Major Assault.....	49	88	96	75	41	81	71	17	6	5	4	533
Other Assault.....	52	100	64	21	11	20	18	7	1		1	295
Rape.....	1						2		1	1	1	6
Serious Sexual Assault..	17	22	30	35	30	85	143	22	8	1	1	394
Incest/Carnal Knowledge.	5	6	5	9	6	30	50	8	1			120
Indecent Assault.....	9	13	9	14	11	31	17					104
Buggery/Bestial.....	4	3	4	5	4	12	21	5	1			59
Robbery Major Assault...	44	17	36	32	44	141	209	45	12	10	7	597
Other Robbery.....	38	20	22	30	27	73	63	8	5			286
Fraud.....	24	34	61	38	24	64	29	2				276
Break Enter and Steal...	128	136	166	111	90	144	88	5	6	1		875
Other Steal.....	127	160	162	78	51	81	35	8	1	1		704
Driving/Traffic.....	87	162	131	65	22	28	8	2			1	506
Offences against Order..	64	103	102	48	23	20	9	2	1			372
Drug Offences.....	50	76	77	102	73	195	227	42	20	4	1	867
Other Offences.....	13	9	7	9	7	12	16	11	5			89
GRAND TOTAL.....	719	955	973	678	469	1042	1149	266	148	63	43	6505

SOURCE: RESEARCH & STATISTICS N.S.W. DEPT OF CORRECTIVE SERVICES

PERCENTAGE OF SENTENCED INMATES, N.S.W., 30 JUNE 1996:
 MOST SERIOUS OFFENCE BY SENTENCE SERVED

MALE INMATES ONLY

MOST SERIOUS OFFENCE	SENTENCE SERVED TO CENSUS DATE											GRAND TOTAL
	Under 1 month	1 and under 3 months	3 and under 6 months	6 and under 9 months	9 and under 12 months	1 and under 2 years	2 and under 5 years	5 and under 7 years	7 and under 10 years	10 and under 15 years	15+ years	
MOST SERIOUS OFFENCE												
Murder.....	.3	.4	.1	.3	.2	.7	8.5	23.7	47.3	57.1	60.5	4.8
Attempt Murder.....		.1		.1		.5	.7	1.9	2.7	1.6		.4
Conspiracy to Murder....						.1	.1					.0
Manslaughter.....	.7	.1		.4	.9	1.2	3.1	5.3	4.1	4.8	2.3	1.3
Major Assault.....	6.8	9.2	9.9	11.1	8.7	7.8	6.2	6.4	4.1	7.9	9.3	8.2
Other Assault.....	7.2	10.5	6.6	3.1	2.3	1.9	1.6	2.6	.7		2.3	4.5
Rape.....	.1						.2		.7	1.6	2.3	.1
Serious Sexual Assault..	2.4	2.3	3.1	5.2	6.4	8.2	12.4	8.3	5.4	1.6	2.3	6.1
Incest/Carnal Knowledge..	.7	.6	.5	1.3	1.3	2.9	4.4	3.0	.7			1.8
Indecent Assault.....	1.3	1.4	.9	2.1	2.3	3.0	1.5					1.6
Buggery/Bestial.....	.6	.3	.4	.7	.9	1.2	1.8	1.9	.7			.9
Robbery Major Assault...	6.1	1.8	3.7	4.7	9.4	13.5	18.2	16.9	8.1	15.9	16.3	9.2
Other Robbery.....	5.3	2.1	2.3	4.4	5.8	7.0	5.5	3.0	3.4			4.4
Fraud.....	3.3	3.6	6.3	5.6	5.1	6.1	2.5	.8				4.2
Break Enter and Steal...	17.8	14.2	17.1	16.4	19.2	13.8	7.7	1.9	4.1	1.6		13.5
Other Steal.....	17.7	16.8	16.6	11.5	10.9	7.8	3.0	3.0	.7	1.6		10.8
Driving/Traffic.....	12.1	17.0	13.5	9.6	4.7	2.7	.7	.8			2.3	7.8
Offences against Order..	8.9	10.8	10.5	7.1	4.9	1.9	.8	.8	.7			5.7
Drug Offences.....	7.0	8.0	7.9	15.0	15.6	18.7	19.8	15.8	13.5	6.3	2.3	13.3
Other Offences.....	1.8	.9	.7	1.3	1.5	1.2	1.4	4.1	3.4			1.4
GRAND TOTAL.....	100.0	100.0	100.0	100.0	100.0	100.0	100.0	100.0	100.0	100.0	100.0	100.0

SENTENCED INMATES, N.S.W., 30 JUNE 1996:
 MOST SERIOUS OFFENCE BY SENTENCE SERVED

FEMALE INMATES ONLY

MOST SERIOUS OFFENCE	SENTENCE SERVED TO CENSUS DATE										GRAND TOTAL
	Under 1 month	1 and under 3 months	3 and under 6 months	6 and under 9 months	9 and under 12 months	1 and under 2 years	2 and under 5 years	5 and under 7 years	7 and under 10 years	10 and under 15 years	
MOST SERIOUS OFFENCE											
Murder.....							5	1	3	2	11
Attempt Murder.....						1					1
Conspiracy to Murder....				1			1				2
Manslaughter.....	1		1		2	2	8	3			17
Major Assault.....	2	3	1	2		3	3				14
Other Assault.....	5	4	1		1						11
Serious Sexual Assault..	1	1			1						3
Buggery/Bestial.....		1									1
Robbery Major Assault...	1	1	3	2		5	2				14
Other Robbery.....	1	2	1			5	1				10
Fraud.....	14	14	13	14	6	7	5				73
Break Enter and Steal...	6	7	12	4	2	4	8	1			44
Other Steal.....	11	16	17	6	1	4	1				56
Driving/Traffic.....	3	5	3	1	1		1				14
Offences against Order..	6	5	4	4	2	1					22
Drug Offences.....	4	14	13	7	4	20	15	4			81
Other Offences.....	3	1					4				8
GRAND TOTAL.....	58	74	69	41	20	52	54	9	3	2	382

PERCENTAGE OF SENTENCED INMATES, N.S.W., 30 JUNE 1996:
 MOST SERIOUS OFFENCE BY SENTENCE SERVED

FEMALE INMATES ONLY

MOST SERIOUS OFFENCE	SENTENCE SERVED TO CENSUS DATE										GRAND TOTAL
	Under 1 month	1 and under 3 months	3 and under 6 months	6 and under 9 months	9 and under 12 months	1 and under 2 years	2 and under 5 years	5 and under 7 years	7 and under 10 years	10 and under 15 years	
MOST SERIOUS OFFENCE											
Murder.....							9.3	11.1	100.0	100.0	2.9
Attempt Murder.....						1.9					.3
Conspiracy to Murder....				2.4			1.9				.5
Manslaughter.....	1.7		1.4		10.0	3.8	14.8	33.3			4.5
Major Assault.....	3.4	4.1	1.4	4.9		5.8	5.6				3.7
Other Assault.....	8.6	5.4	1.4		5.0						2.9
Serious Sexual Assault..	1.7	1.4			5.0						.8
Buggery/Bestial.....		1.4									.3
Robbery Major Assault...	1.7	1.4	4.3	4.9		9.6	3.7				3.7
Other Robbery.....	1.7	2.7	1.4			9.6	1.9				2.6
Fraud.....	24.1	18.9	18.8	34.1	30.0	13.5	9.3				19.1
Break Enter and Steal...	10.3	9.5	17.4	9.8	10.0	7.7	14.8	11.1			11.5
Other Steal.....	19.0	21.6	24.6	14.6	5.0	7.7	1.9				14.7
Driving/Traffic.....	5.2	6.8	4.3	2.4	5.0		1.9				3.7
Offences against Order..	10.3	6.8	5.8	9.8	10.0	1.9					5.8
Drug Offences.....	6.9	18.9	18.8	17.1	20.0	38.5	27.8	44.4			21.2
Other Offences.....	5.2	1.4					7.4				2.1
GRAND TOTAL.....	100.0	100.0	100.0	100.0	100.0	100.0	100.0	100.0	100.0	100.0	100.0

APPENDIX

**NSW Inmates 30 June Selected Years
Aboriginality**

Year	Non-Aboriginal	Aboriginal/TSI	Unknown	Total
1982	3476	216	27	3719
1983	3394	236	103	3733
1984	3047	242	65	3354
1985	3726	304	85	4115
1986	3763	338	129	4230
1987	4105	389	77	4551
1988	4097	385	209	4691
1989	4839	415	7	5261
1990	5510	579	278	6367
1991	6069	664	370	7103
1992	6740	648	97	7485
1993	6809	729	94	7632
1994	6828	827	56	7711
1995	6754	888	107	7749
1996	6598	952	141	7691

**Percentage of NSW Inmates, 30 June Selected Years
Aboriginality**

Year	Non-Aboriginal	Aboriginal/TSI	Unknown	Total
1982	93.5	5.8	0.7	100.0
1983	90.9	6.3	2.8	100.0
1984	90.9	7.2	2.0	100.0
1985	90.6	7.4	2.1	100.0
1986	89.0	8.0	3.1	100.0
1987	90.2	8.1	1.7	100.0
1988	87.3	8.2	4.5	100.0
1989	92.0	7.9	0.1	100.0
1990	86.5	9.1	4.4	100.0
1991	85.4	9.3	5.2	100.0
1992	90.0	8.7	1.3	100.0
1993	89.2	9.6	1.2	100.0
1994	88.6	10.7	0.7	100.0
1995	87.2	11.5	1.3	100.0
1996	85.8	12.4	1.8	100.0

**Aboriginal & Torres Strait Islander Inmates
30 June Selected Years**

Year	Male	Female	Total
1982	210	6	216
1983	226	10	236
1984	234	8	242
1985	294	10	304
1986	325	13	338
1987	350	19	369
1988	358	27	385
1989	382	33	415
1990	543	36	579
1991	613	51	664
1992	599	49	648
1993	685	44	729
1994	764	63	827
1995	831	57	888
1996	878	74	952

**Aboriginal & Torres Strait Islander Inmates:
30 June Selected Years - Percentages**

Year	Male	Female	Total
1982	97.2	2.8	100.0
1983	95.8	4.2	100.0
1984	96.7	3.3	100.0
1985	96.7	3.3	100.0
1986	96.2	3.8	100.0
1987	94.9	5.1	100.0
1988	93.0	7.0	100.0
1989	92.1	7.9	100.0
1990	93.8	6.2	100.0
1991	92.3	7.7	100.0
1992	92.4	7.6	100.0
1993	94.0	6.0	100.0
1994	92.4	7.6	100.0
1995	93.6	6.4	100.0
1996	92.2	7.8	100.0

**Legal Status of Inmates held
30th June Selected Years**

LEGAL STATUS	1982		1983		1984		1985		1986		1987		1988		1989	
	No.	%	No.	%	No.	%	No.	%	No.	%	No.	%	No.	%	No.	%
Under Sentence	3094	83.2	3085	82.6	2706	80.7	3329	80.9	3465	81.9	3687	81.0	3696	78.8	4157	79.0
Awaiting Appeal	150	4.0	114	3.1	150	4.5	144	3.5	133	3.1	181	4.0	236	5.0	350	6.7
Forensic Patient	16	0.4	13	0.3	17	0.5	10	0.2	13	0.3	15	0.3	16	0.3	17	0.3
Unconvicted	370	10.0	473	12.7	461	13.7	459	11.2	605	14.3	655	14.4	726	15.5	717	13.6
Awaiting Sentence	86	2.3	46	1.2	17	0.5	170	4.1	9	0.2	8	0.2	8	0.2	20	0.4
Deportation	3	0.1	2	0.1	3	0.1	3	0.1	5	0.1	5	0.1	9	0.2	-	0.0
Civil Prisoner	-	0.0	-	0.0	-	0.0	-	0.0	0	0.0	0	0.0	0	0.0	0	0.0
TOTAL	3719	100.0	3733	100.0	3354	100.0	4115	100.0	4230	100.0	4551	100.0	4691	100.0	5261	100.0

LEGAL STATUS	1990		1991		1992		1993		1994		1995		1996			
	No.	%	No.	%	No.	%	No.	%	No.	%	No.	%	No.	%	No.	%
Under Sentence	4964	78.0	5628	79.2	6035	80.6	6141	80.5	6332	82.1	6454	83.3	6325	82.2		
Awaiting Appeal	535	8.4	609	8.6	676	9.0	691	9.1	617	8.0	543	7.0	513	6.7		
Forensic Patient	19	0.3	23	0.3	21	0.3	20	0.3	21	0.3	33	0.4	49	0.6		
Unconvicted	790	12.4	808	11.4	720	9.6	750	9.8	724	9.4	709	9.2	800	10.4		
Awaiting Sentence	47	0.7	31	0.4	28	0.4	27	0.4	12	0.2	1	0.0	-	0.0		
Deportation	12	0.2	4	0.1	5	0.1	3	0.0	5	0.1	5	0.1	3	0.0		
Civil Prisoner	0	0.0	0	0.0	0	0.0	0	0.0	0	0.0	2	0.0	1	0.0		
TOTAL	6367	100.0	7103	100.0	7485	100.0	7632	100.0	7711	100.0	7747	100.0	7691	100.0		

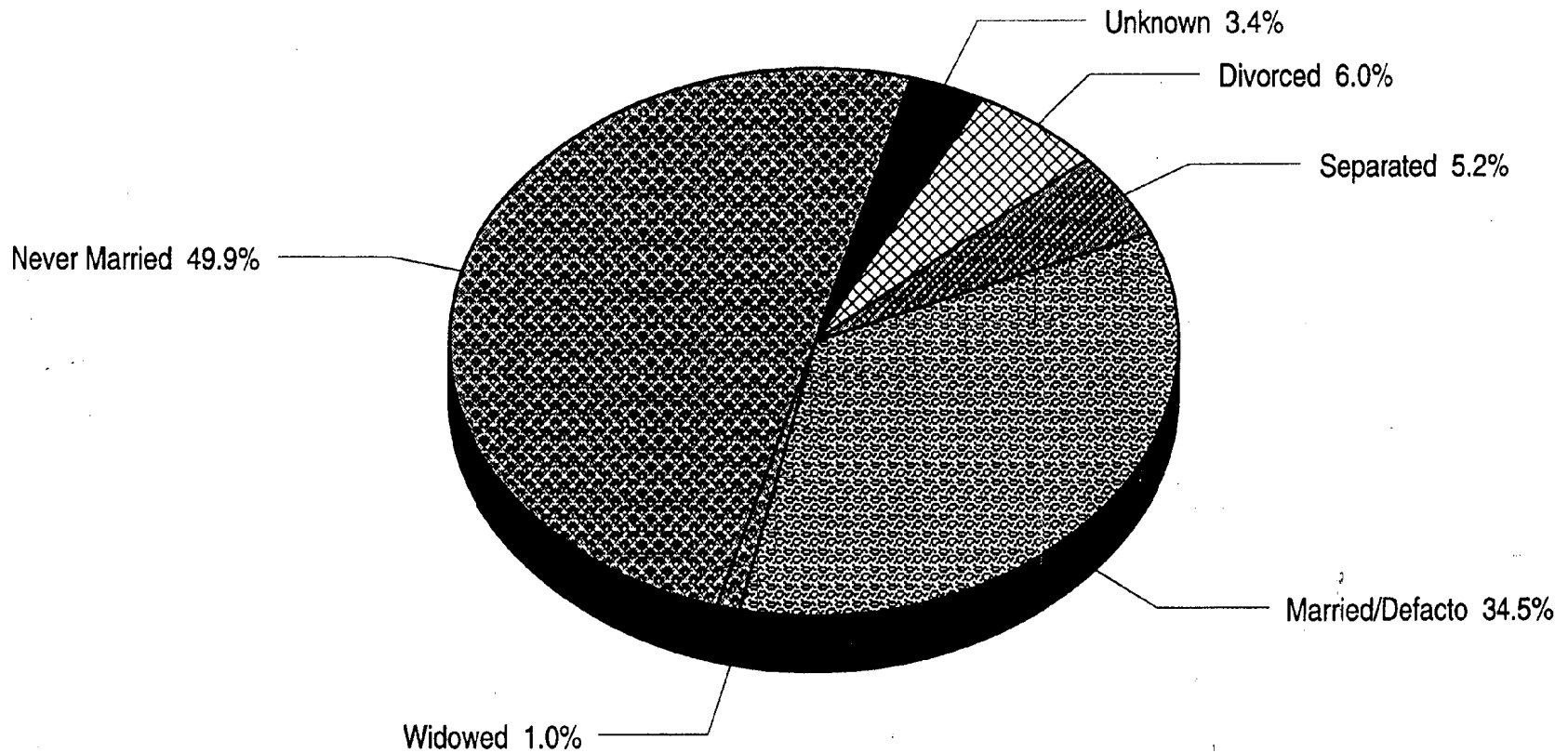
NOTE: * No civil prisoners in New South Wales before 1995.

Research & Statistics, NSW Department of Corrective Services.

Marital Status of NSW Inmates

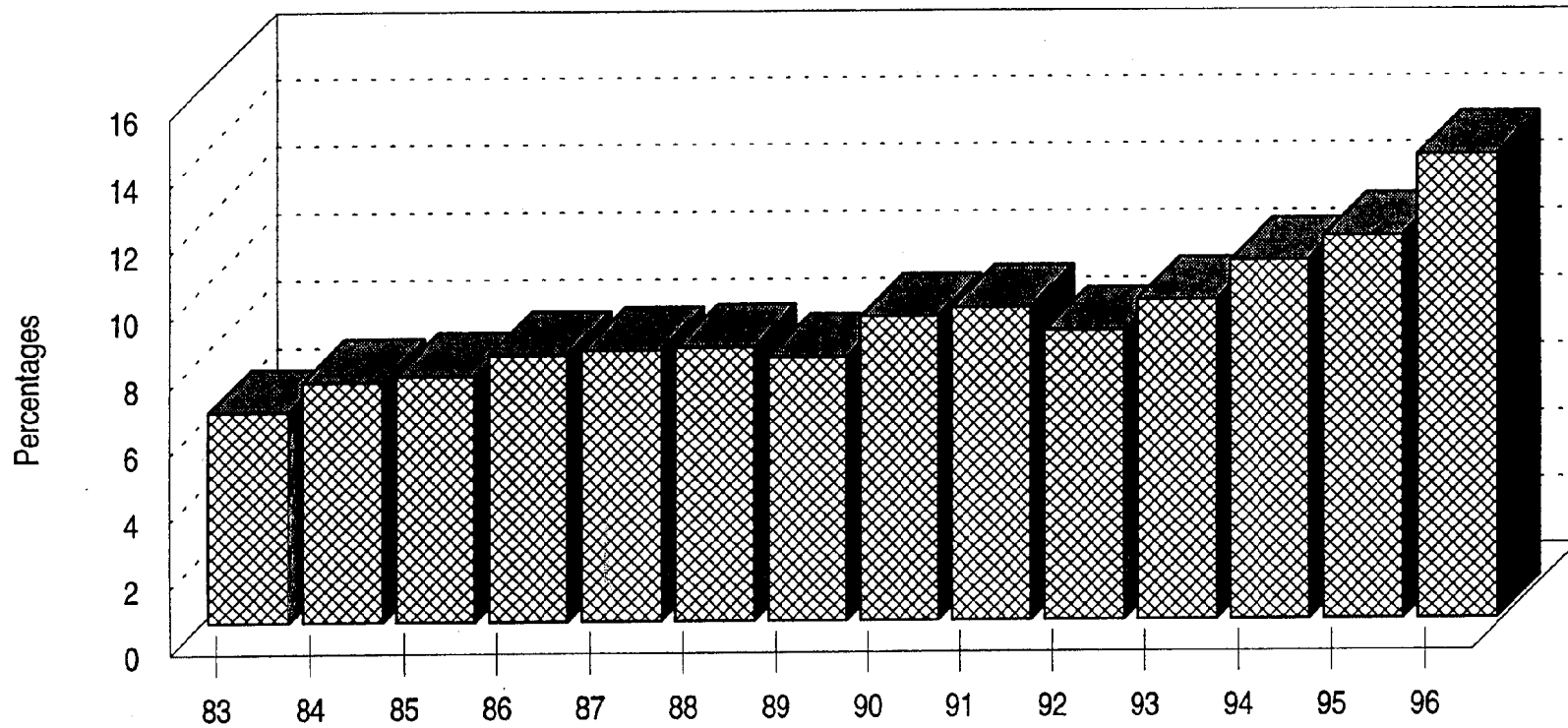
30 June 1996

Page: 45



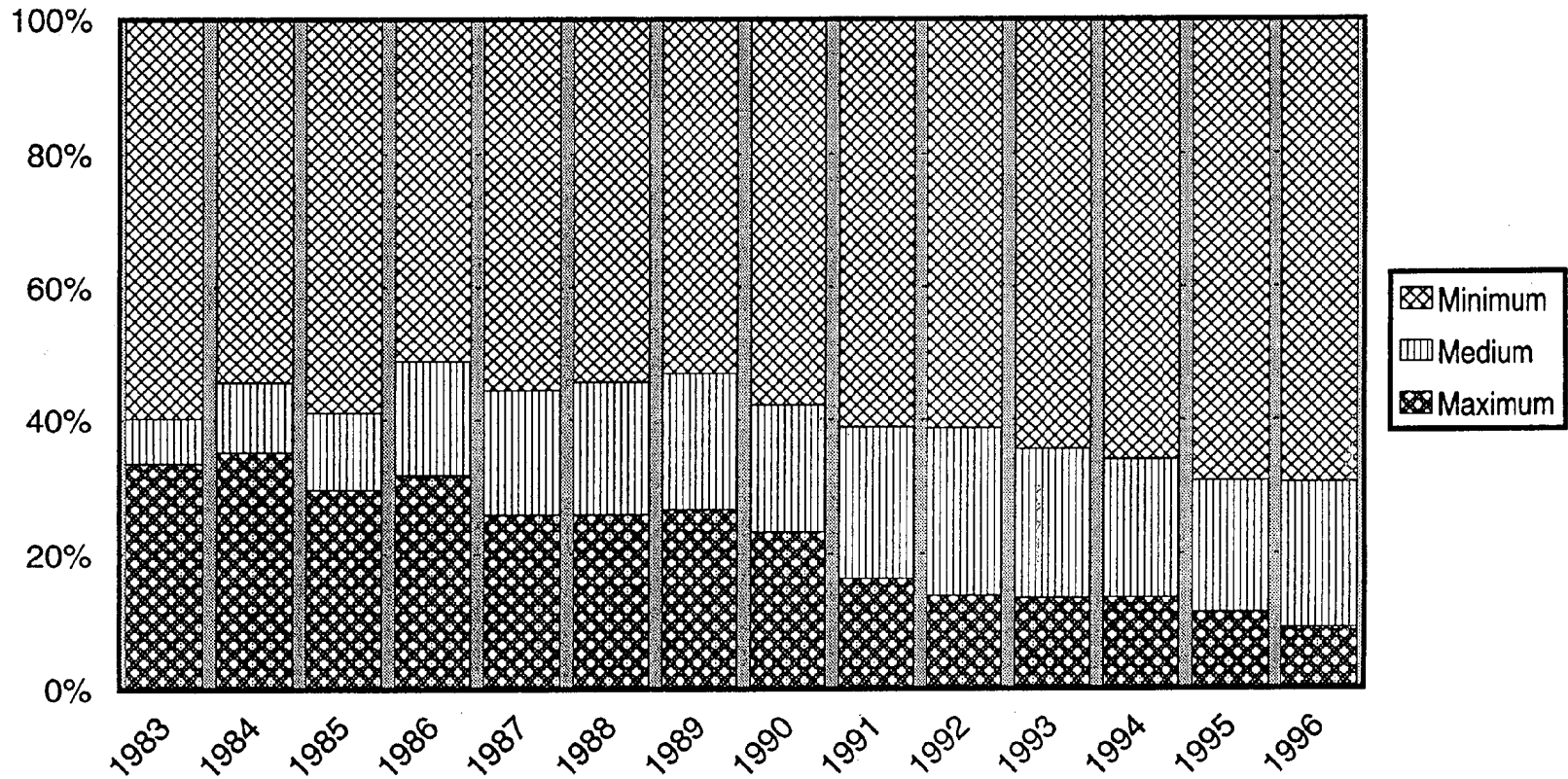
Aboriginal or Torres Strait Islanders as a percentage of Total Inmate Population 30th June at each Year (including Periodic Detainees)

Page: 46



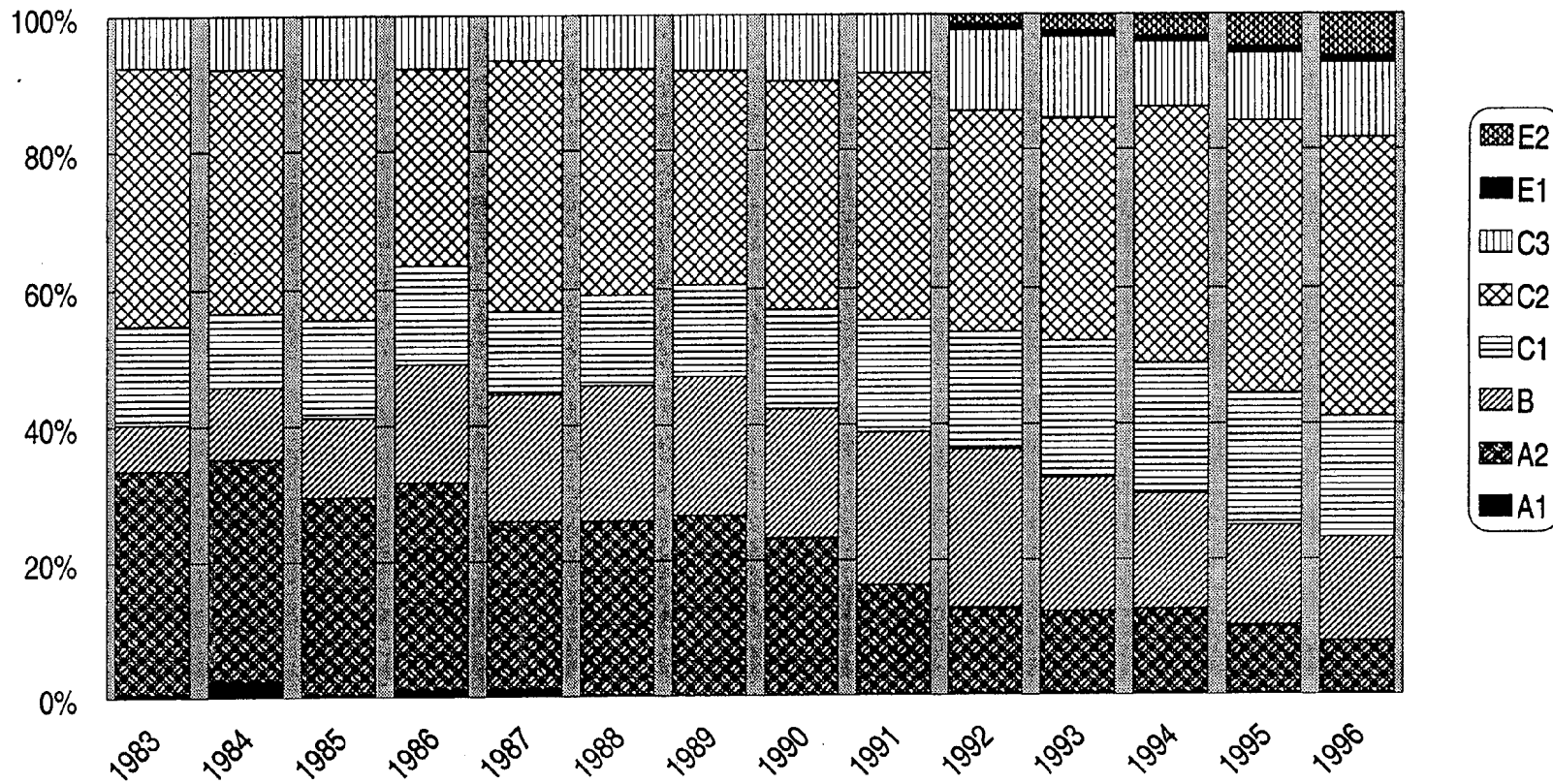
Inmates Security Classification 30 June each year Full-time Sentenced Inmates(Three Categories)

Page: 47



Research & Statistics, NSW Department of Corrective Services.

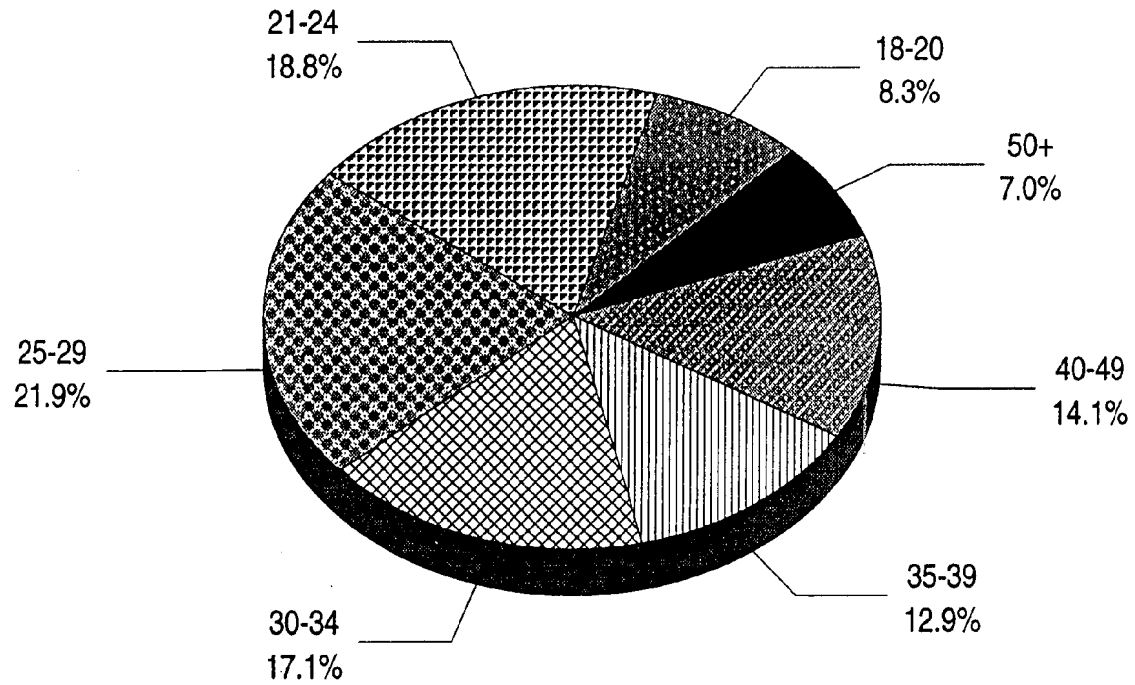
Inmates Security Classification 30 June each year Full-time Sentenced Inmates - (Eight Categories)



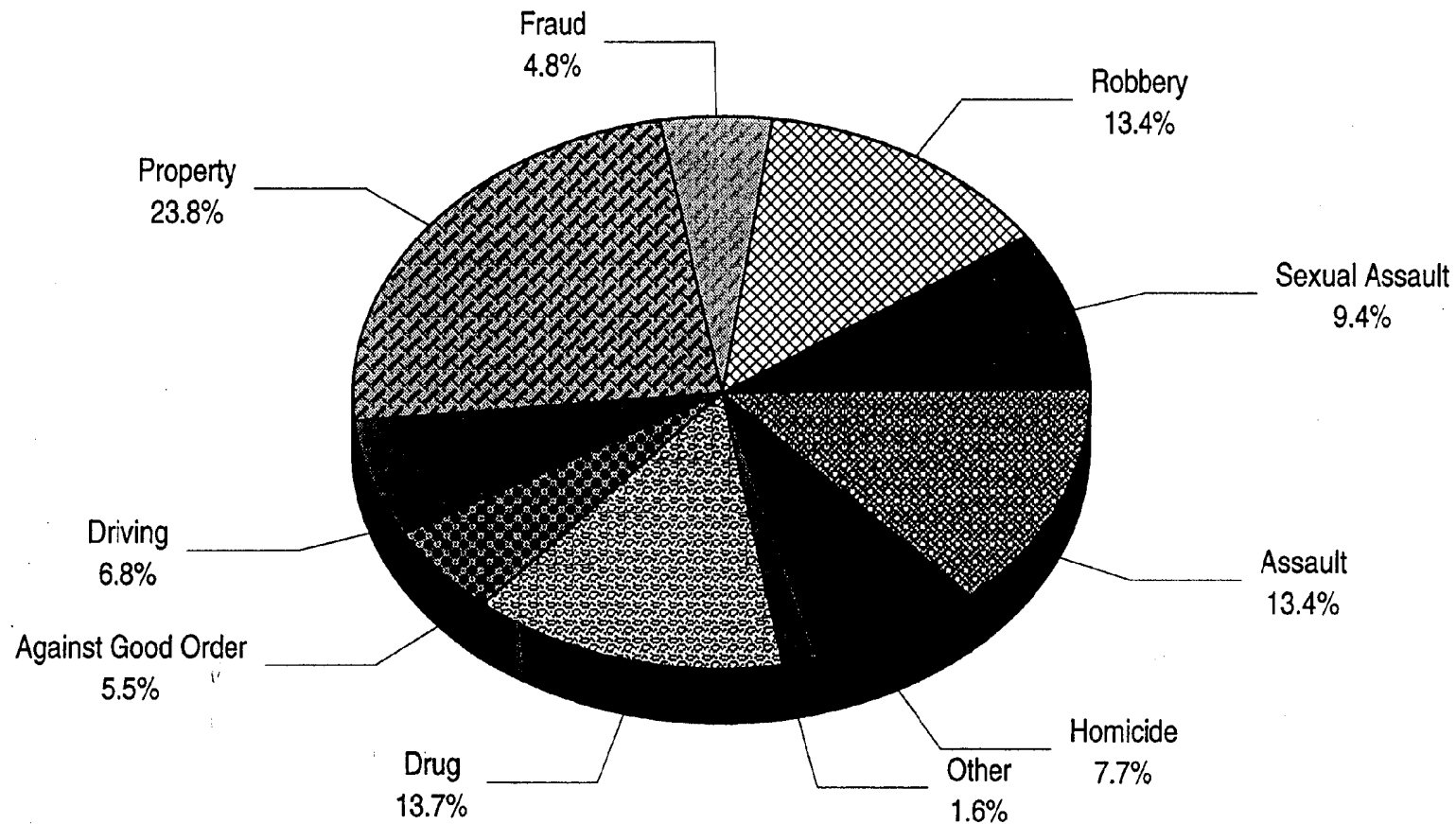
Research & Statistics, NSW Department of Corrective Services.

Age of NSW Inmates

30 June 1996



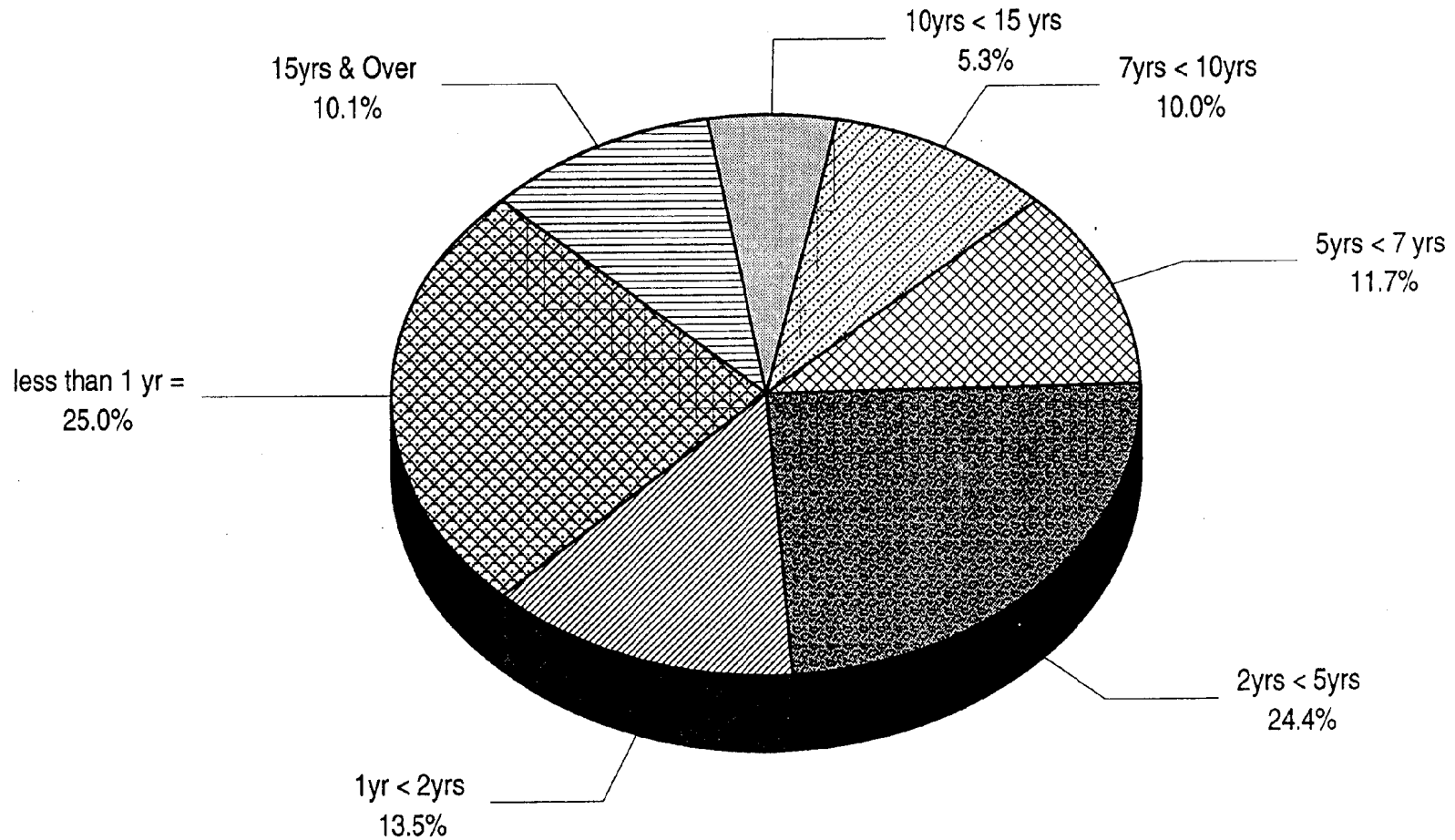
Most Serious Offence of NSW Inmates (including Periodic Detainees) 30 June 1996



Research & Statistics, NSW Department of Corrective Services.

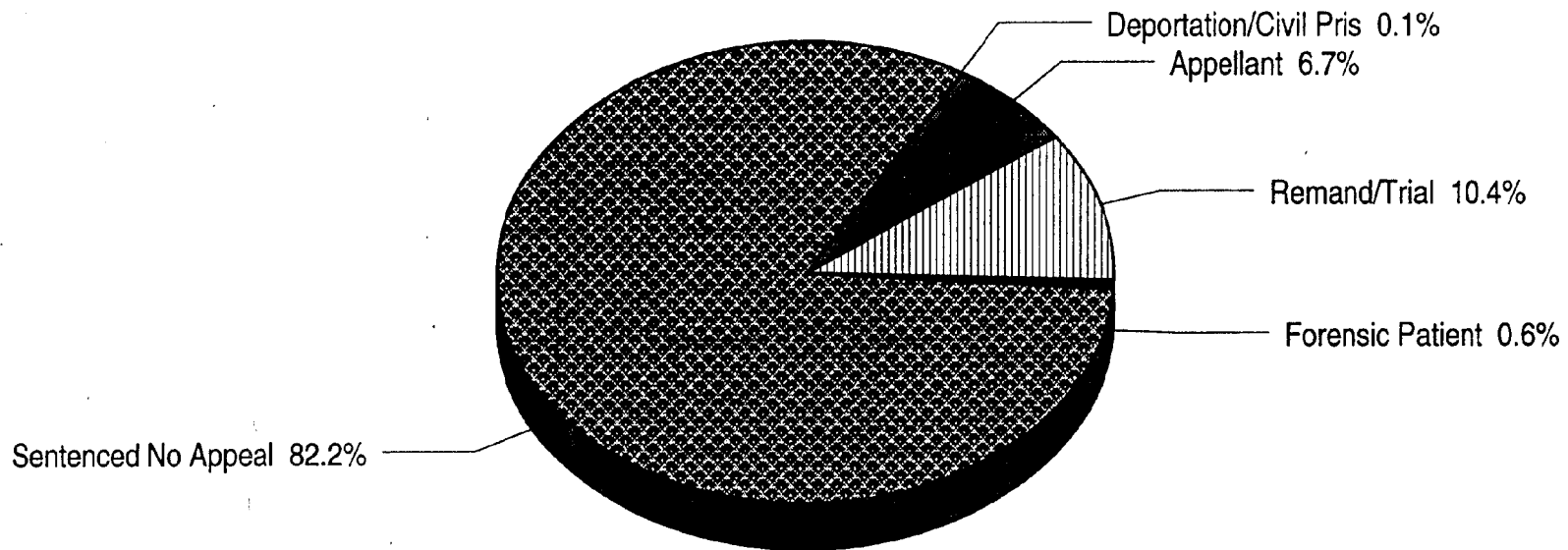
Aggregate Sentence* for NSW Inmates June 1996

Inmates sentenced to either a fixed or minimum term of imprisonment (Excluding life, forensic patient and periodic detention)

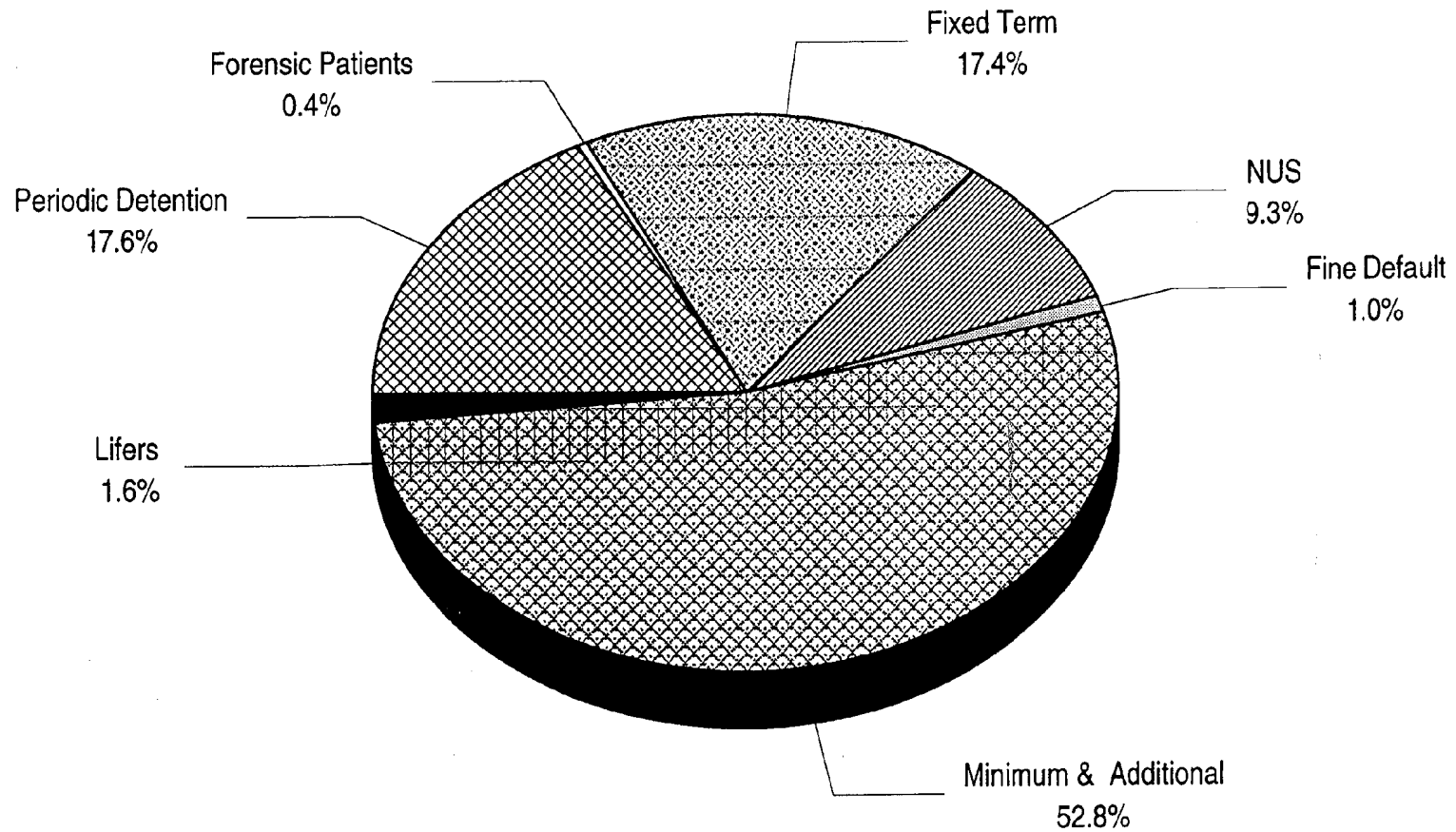


Legal Status for NSW Inmates

30 June 1996



Sentence Type for NSW Inmates 30 June 1996



APPENDIX

New South Wales Classification of Offences and of Care and Protection Orders for Children (Second Revision)

Code	Offence
1.	<i>Homicides, Assaults and Like Offences</i>
100	Murder, Accessory before the fact to murder
101	Attempted murder
110	Conspire to commit murder
120	Manslaughter (other than by driving)
	Assaults, Not elsewhere classified:
130	Major assault - e.g. malicious wounding, A.O.A.B.H. - G.B.H.
140	Minor assault - e.g. assault police/child/common
150	Assault of unspecified nature
	Acts endangering life or likely to cause serious bodily harm, not elsewhere classified:
160	endangering person on railways
161	arson of building or vehicle, person therein
169	other
170	Cruelty to or neglect (including abandonment) of children
180	Abduction and kidnapping
182	Procuring an Abortion
199	Other
2.	<i>Sexual and Related Offences</i>
200	Rape - e.g. ravish, carnally know
201	Attempted rape - e.g. assault intent to rape
202	Grievous Bodily Harm with intent to have sexual intercourse
203	Grievous Bodily Harm intent to have sexual intercourse with third person, present or nearby
204	Actual Bodily Harm threaten/intent to have sexual intercourse
205	A.B.H. threaten/intent to have sexual intercourse with third person
206	Sexual intercourse without consent with person 16 years of age or over
207	Sexual intercourse without consent with person under 16 years
210	Incest - e.g. carnal knowledge daughter 16-17, attempt
	Unlawful sexual intercourse with a female not elsewhere classified:
211	Under 10 years of age - e.g. carnal knowledge, assault intent carnal knowledge
219	Other carnal knowledge
220	Indecent assault on female
221	Indecent assault on person or act of indecency (Section 61)
230	Buggery and bestiality
240	Indecent assault on or act with male excluding buggery
250	Procuring or soliciting male for commission of unnatural act
	Prostitution and related offences:
260	Soliciting or loitering by prostitute
261	Procuring
269	Other
299	Other (incl. Necrophilia)
3.	<i>Robbery and Extortion</i>
	Robbery
300	With major assault - (e.g. Armed Robbery)
310	With minor assault - (e.g. Assault and Rob)
319	Unspecified whether major or minor assault - e.g. conspiracy to robbery
320	Extortion - e.g. demand money or property with menace
321	Blackmail
4.	<i>Fraud</i>
330	Offences against currency
335	Forgery and uttering, not elsewhere contained
338	Passing valueless cheques
340	Fraud, not elsewhere contained - e.g. false pretences, imposition
5.	<i>Offences Against Property, not elsewhere counted</i>
350	Misappropriation - e.g. embezzlement
360	Break, Enter and Steal
	Larceny of vehicles or boats (including illegal use):
370	Larceny of boats
373	Larceny of motor vehicles
373	Larceny of other vehicle
377	Steal from the person
379	Stealing not elsewhere contained - e.g. larceny
380	Unlawful possession of property - e.g. goods in custody
385	Receiving
	Injury to property
390	Injury to animals
395	Arson (person not therein)
399	Other
6.	<i>Driving, Traffic and Related Offences</i>
	Driving offences occasioning:
400	Death
405	Injury
	Driving offences, not elsewhere contained:
410	Driving under the influence of alcohol or drugs
411	Aid and abet driving under influence of alcohol or drugs
412	Refuse breath test or analysis for alcohol
415	Dangerous driving
420	Negligent driving
431	Failing to stop after an accident
439	Other

Code	Offence
6.	<i>Driving, Traffic and Related Offences</i>
	Licence Offences - associated with driving:
440	Driving whilst licence suspended etc.
441	Driving without a licence
445	Fail to carry licence or otherwise part with licence
449	Other - including fraudulently applying for or obtaining a licence whilst disqualified
450	Offences relating to road-worthiness of vehicle
460	Offences relating to transport of goods by road
470	Registration and insurance offences
480	Parking offences
190	Offences by pedestrians
499	Other offences
7.	<i>Offences Against Enforcement of Order</i>
500	Accessory after the fact
510	Breach of conditions of release or recognizance
515	Bail offences
520	Contempt of court - e.g. fail to comply with court order/community service order
521	Escape from lawful custody - e.g. fail to report to P.D.C.
522	Fail to comply with maintenance order
530	Perjury, bribery and like offences
540	Resisting arrest or incite thereto
550	Treason or sedition
560	Trespassing and like offences
570	Unlawful assembly and related offences
598	Pronounced to be habitual criminal
599	Other
8.	<i>Offences against law relating to "drug taking" (Including Child Welfare Act)</i>
600	Use etc or possession
610	Obtaining by forgery or false representation
620	Selling
630	Importing or exporting
635	Making e.g. cultivate
640	Other
9.	<i>Other Offences</i>
649	Offences relating to sale, possession, etc of poisons and restricted substances, not elsewhere contained
	Offensive behaviour and related offences:
	Drunkenness
651	Language, obscene, threatening or abusive
659	Other
660	Found with intent to commit an offence, not elsewhere contained
661	Consorting
662	Vagrancy
670	Environmental Offences
680	Betting and gaming offences
681	Bigamy
682	Evade fare
683	Offences against liquor laws
684	Unlawful importation or exportation of goods, not elsewhere contained
	Unlawful possession of weapons, etc, related offences:
685	Pistols and Firearms
687	Other weapons and dangerous articles
689	Other
698	Prohibited migrant
699	Other
10.	<i>Order Relating the to Care and Protection of Children</i>
	Orders arising from neglect or child:
	Destitute or homeless:
700	No fixed place of abode
705	Destitute
710	Exposed to moral danger
	Unfit guardianship:
720	Improper
721	Incompetent
739	Other orders arising from neglect of child
	Orders arising from the conduct of child:
740	Absconding from custody
750	Breach of probation conditions
760	Truancy
770	Uncontrollable
790	Drug involvement - proceeding under Child Welfare Act
799	Other orders arising from conduct of child
999	Not Known